



Technical Report TR_006

**Technical report produced for
Strategic Environmental Assessment – SEA2**

BACKGROUND INFORMATION ON MARINE MAMMALS RELEVANT TO SEA2

Produced by SMRU, August 2001



© Crown copyright

Strategic Environmental Assessment - SEA2
Technical Report 006 - Marine Mammals

MARINE MAMMALS

*P S Hammond, J C D Gordon, K Grellier, A J Hall, S P Northridge,
D Thompson & J Harwood*

SMRU

CONTENTS

SUMMARY	4
Distribution and abundance	4
Ecological importance	5
Sensitivity to disturbance, contamination and disease	6
Noise	6
Contaminants	7
Oil spills	7
Oil dispersants	7
Disease	7
Bycatch and other non-oil related management issues	8
Bycatch	8
Ship collisions	8
Conservation frameworks	8
Conclusions	9
1. DISTRIBUTION AND ABUNDANCE	11
1.1 Introduction	11
1.2 Baleen Whales	12
1.2.1 Minke whale <i>Balaenoptera acutorostrata</i>	12
1.3 Toothed whales	15
1.3.1 Harbour porpoise <i>Phocoena phocoena</i>	15
1.3.2 Bottlenose dolphin <i>Tursiops truncatus</i>	19
1.3.3 White-beaked dolphin <i>Lagenorhynchus albirostris</i>	19
1.3.4 Atlantic white-sided dolphin <i>Lagenorhynchus acutus</i>	19
1.3.5 Killer whale <i>Orcinus orca</i>	22
1.3.6 Risso's dolphin <i>Grampus griseus</i>	23
1.3.7 Short-beaked common dolphin <i>Delphinus delphis</i>	24
1.3.8 Long-finned pilot whale <i>Globicephala melas</i>	24
1.3.9 Sperm whale <i>Physeter macrocephalus</i>	24

Strategic Environmental Assessment - SEA2

Technical Report 006 - Marine Mammals

1.4 Pinnipeds	25
1.4.1 Harbour (or common) seal, <i>Phoca vitulina</i>	25
1.4.2 Grey seal, <i>Halichoerus grypus</i>	26
2. ECOLOGICAL IMPORTANCE	29
2.1 Harbour seal	29
2.1.1 Diet composition	29
2.1.2 Prey consumption	30
2.1.3 Foraging movements and distribution	30
2.2 Grey seal	30
2.2.1 Diet composition	30
2.2.2 Prey consumption	31
2.2.3 Foraging movements and distribution	31
2.3 Cetaceans	33
2.3.1 Harbour porpoise	33
2.3.2 Minke whale	33
2.3.3 White-beaked dolphin	34
2.3.4 Atlantic white-sided dolphin	34
2.3.5 Killer whale	34
2.3.6 Bottlenose dolphin	34
2.3.7 Other species	34
3. SENSITIVITY TO DISTURBANCE, CONTAMINATION AND DISEASE	35
3.1 Noise	35
3.1.1 Effects of man-made sounds on marine mammals	35
3.1.2 Responses of marine mammals to different types of noise	42
3.1.3 Research Requirements	46
3.2 Contaminants	47
3.2.1 Background	47
3.2.2 Sources of Data	49
3.2.3 Knowledge	49
3.2.4 Gaps in knowledge	52
3.3 Disease	52
3.3.1 Background	52
3.3.2 Sources of data	53
3.3.3 Knowledge	53
3.3.4 Gaps in Knowledge	54
4. BYCATCH AND OTHER NON-OIL MANAGEMENT ISSUES	56

Strategic Environmental Assessment - SEA2
Technical Report 006 - Marine Mammals

4.1	Bycatch	56
4.2	Other issues	57
5.	CONSERVATION FRAMEWORKS.....	57
5.1	Cetaceans	57
5.1.1	Europe	57
5.1.2	UK	58
5.2	Seals	58
5.2.1	Europe	58
5.2.2	UK	58
6.	CONCLUSIONS.....	59
7.	REFERENCES.....	60

SUMMARY

Distribution and abundance

Eight marine mammal species occur regularly over large parts of the North Sea: grey seal, harbour seal, harbour porpoise, bottlenose dolphin, white-beaked dolphin, Atlantic white-sided dolphin, killer whale and minke whale. There is extensive information on the distribution and abundance of grey seals around Britain from annual aerial surveys of breeding colonies and from over 100 animals fitted with satellite-relayed data loggers. Information on harbour seals is available from aerial surveys and VHF telemetry. There is also extensive information on distribution in the North Sea from a number of summer sightings surveys (SCANS-94, NASS-89 and NILS-95). Estimates of abundance are available from these surveys for some species. There are also many records from year-round surveys by the European Seabirds at Sea Consortium (ESAS) since 1979, from cetacean observations made during seismic surveys in 1996-98, and sightings by voluntary observers compiled by the Sea Watch Foundation.

Minke whales occur throughout the central and northern North Sea in summer particularly in the west. Highest densities appear to be in the northwest North Sea, particularly off the mainland coast of Scotland and into the western part of the central SEA-2 block. Estimates of summer abundance in the area range from 5,000 to 20,000 whales. It is clear that the central SEA-2 block in particular, and to a lesser extent the northern SEA-2 block, are important areas for minke whales in summer.

The harbour porpoise is the commonest cetacean in the North Sea. Highest densities in summer are north of 56°N, mostly in a north-south band between 1°E and 3°E. In summer 1994, there were an estimated 268,000 porpoises in the North Sea. It is clear that the northern and central SEA-2 blocks are very important areas for harbour porpoises in summer, and that the southern SEA-2 block is also important, despite the predicted low densities.

The small, geographically isolated, resident population of bottlenose dolphins in the North Sea appears to be distributed coastally in summer but numbers decrease in winter. Animals from this population may move offshore at this time of year; possibly into the central SEA-2 block.

White-beaked dolphins are restricted to the North Atlantic. In the North Sea, they occur year-round where they are most commonly distributed between 54°N and 59°N, across the central SEA-2 block and northern half of the southern SEA-2 block. Summer abundance of white-beaked dolphins in the North Sea is estimated at 7,900 animals. The Atlantic white-sided dolphin is primarily an offshore species but does occur in the North Sea, especially in summer. Estimated summer abundance of white-beaked and Atlantic white-sided dolphins combined is 11,800 animals.

Killer whales have been observed throughout the north-western North Sea in all months except October. Most records are from the northern part of the northern SEA-2 block and in the north-eastern part of the central SEA-2 block.

Other cetacean species are not common in the North Sea.

Strategic Environmental Assessment - SEA2

Technical Report 006 - Marine Mammals

Harbour seals are one of the most widespread pinniped species and have a practically circumpolar distribution in the Northern Hemisphere. Harbour seals are found in all coastal waters around the North Sea, including Orkney and Shetland. A minimum population estimate in the North Sea is 38,000; just over half of the Northeast Atlantic subspecies. During the pupping and moulting seasons in June to August they spend more time ashore than at other times of the year. In the SEA-2 blocks, they are likely to occur in significant numbers only in the south-western part of the southern SEA-2 block.

Grey seals are restricted to the North Atlantic; total abundance is approximately 300,000 animals. The population in the northeast Atlantic has been increasing at around 6% annually since the 1960's; its current size is estimated at around 130,000-140,000 individuals, of which approximately 70,000 are associated with breeding colonies in the North Sea. In the North Sea, pupping occurs from October (in the north) to January (in the south) and moulting occurs in February-March. Most of the population will be on land most of the time for several weeks during these periods and densities at sea will be lower. Extensive information on the distribution of British grey seals at sea shows that although they do occur in the SEA-2 blocks, the grey seal population as a whole does not spend significant time in these areas.

Ecological importance

Grey seals are important marine predators off eastern Scotland. Their diet comprises primarily sandeels, whitefish and flatfish, in that order of importance, but varies seasonally and from region to region. A current estimate of annual prey consumption in the North Sea is approximately 130,000 tonnes, of which almost 50% is sandeels. Grey seal foraging movements are on two geographical scales: long and distant trips from one haul-out site to another; and local repeated trips to discrete offshore areas. The large distances travelled indicate that grey seals in the North Sea are not ecologically isolated and can thus be considered as coming from a single ecological population. Foraging destinations at sea are typically localised areas characterised by a gravel/sand seabed sediment: the preferred burrowing habitat of sandeels, an important component of grey seal diet. The limited distance from a haul-out site of a typical foraging trips indicates that the ecological impact of seal predation may be greater coastally, rather than further offshore. Recent and ongoing mathematical modelling has generated predicted distributions of where grey seals spend their time foraging around the British Isles. Although the model predicts that grey seals do spend some time foraging in the SEA-2 blocks, it is a small percentage of total time at sea. Additional information indicates that the southern SEA-2 block may be more important for grey seals that the modelling currently predicts.

The harbour seal is the smaller of the two species of pinniped that breed in Britain but is also an important predator in the North Sea. The diet is composed of a wide variety of prey including sandeels, whitefish, herring and sprat, flatfish, octopus and squid. Diet varies seasonally and from region to region. A very approximate estimate of annual consumption of prey by harbour seals in the North Sea is 65,000 - 90,000 tonnes. Direct information on foraging movements and the distribution at sea of harbour seals in the North Sea is limited to studies in the Moray Firth, where harbour seals forage within 60 km of their haul-out sites. It is highly unlikely, therefore, that harbour seals forage in the central and northern SEA-2 blocks. However, if foraging ranges in the south-western North Sea are similar, harbour seals are likely to forage in the south-western part of the southern SEA-2 block.

There is relatively little information on the ecology of cetaceans in the North Sea. Harbour porpoises feed mainly on fish found on or near to the seabed. The main species consumed are herring, sprats, sandeels, whiting, cod and other cod-like fish and this diet does not

Strategic Environmental Assessment - SEA2

Technical Report 006 - Marine Mammals

appear to have changed during the past 40 years. The harbour porpoise is the most numerous marine mammal in the North Sea and total annual fish consumption is likely to run into hundreds of thousands of tonnes for the North Sea as a whole. The significance of this species' predation from an ecological perspective has not been assessed, nor has the importance of the areas under consideration with respect to the entire North Sea.

Relatively little information is available for other cetacean species. Minke whales feed on a variety of fish, including herring, cod, haddock, sandeels. White-beaked dolphins take whiting and other cod-like fish, sandeels, herring and octopus. Killer whales are known to feed on herring, mackerel and seals around haul-out sites.

The abundance and availability of fish, especially those species mentioned above, is clearly of prime importance in determining the reproductive success or failure of marine mammals in this area, as elsewhere. Changes in the availability of principal forage fish may therefore be expected to result in population level changes of marine mammals. It is currently not possible to predict how any particular change in fish abundance would be likely to affect any of these marine mammal populations.

Sensitivity to disturbance, contamination and disease

Noise

Offshore oil and gas production is noisy. Each stage of the oil extraction process produces loud and potentially disturbing or even damaging sounds. Exploration entails seismic surveys which produce intense low frequency impulse noise, extraction includes drilling, increased vessel traffic, pipeline laying and seismic site surveys, and decommissioning involves explosive removals.

There is an increasing awareness of the importance of sound to marine mammals. Any man-made noise could potentially have an effect on a marine mammal. The effects could range from mild irritation through impairment of foraging or disruption of social interactions to hearing loss and in extreme cases may lead to injury or even death. Most of the noise generated by offshore oil operations is low frequency, mostly <1kHz, although higher frequency sounds are also generated. Seals are known to be sensitive to those frequencies whereas small (toothed) cetaceans are relatively insensitive to low frequencies. There are no direct measurements of either the frequency range or sensitivities of hearing in large whales, but circumstantial evidence suggests that they may have good low frequency hearing.

Seismic surveys have been shown to cause avoidance behaviour in the two seal species present in the North Sea, and in a range of large cetacean species. It is likely that seismic survey work will affect foraging behaviour by any seals and large whales in the SEA-2 blocks. Current mitigation methods are probably generally effective in preventing physical damage.

There are no reliable data to suggest that vessel noise or drilling noise adversely affect seals or small cetaceans but there are indications that large whales may avoid areas of intense activity.

Decommissioning work that involves the use of explosives is likely to impact animals in the vicinity. Explosives can cause injury and death and may cause hearing damage at substantial ranges. Difficulties in observing and monitoring behaviour and the apparent

Strategic Environmental Assessment - SEA2

Technical Report 006 - Marine Mammals

attractiveness of submerged structures means that some marine mammals, especially seals, are likely to be damaged in blasts. Current mitigation methods are unlikely to be totally effective.

Contaminants

A substantial amount of information is available on the uptake of lipophilic contaminants by marine mammals, such as polychlorinated biphenyls, DDTs and chlorinated pesticides. Other studies on captive and wild populations have shown that these compounds probably have toxic effects on the reproductive and immune systems. Certain heavy metals such as mercury, lead, cadmium, copper and zinc are taken up by marine mammals although there is little evidence that these cause substantial toxic responses, except at high concentrations. Cetacean species which feed lower down the food chain may be at risk from exposure to polyaromatic hydrocarbons, although very little is known about current exposure levels or the effects of chronic exposure in marine mammals.

Oil spills

Direct mortality as a result of contaminant exposure associated with major oil spills has been reported, e.g. following the *Exxon Valdez* oil spill in Alaska in 1989. Many animals exposed to oil developed pathological conditions including brain lesions. Additional pup mortality was reported in areas of heavy oil contamination compared to unoiled areas.

More generally, marine mammals are less vulnerable than seabirds to fouling by oil, but they are at risk from hydrocarbons and other chemicals that may evaporate from the surface of an oil slick at sea within the first few days. Symptoms from acute exposure to volatile hydrocarbons include irritation to the eyes and lungs, lethargy, poor co-ordination and difficulty with breathing. Individuals may then drown as a result of these symptoms.

Grey and harbour seals come ashore regularly throughout the year between foraging trips and additionally spend significantly more time ashore during the moulting period (February-March in grey seals; August in harbour seals) and particularly the pupping season (October-January in grey seals; June-July in harbour seals). Animals most at risk from oil coming ashore on seal haul-out sites and breeding colonies are neonatal pups, which are therefore more susceptible than adults to external oil contamination.

Oil dispersants

There have been no specific studies on the direct acute or chronic toxicity of oil dispersants to seals and cetaceans.

Disease

A small-scale survey of anthropogenic bacteria, including *Salmonella* and *Campylobacter*, has been conducted in seals but there is no information on the occurrence of anthropogenic viruses, such as enteroviruses.

Strategic Environmental Assessment - SEA2

Technical Report 006 - Marine Mammals

Bycatch and other non-oil related management issues

Bycatch

The accidental capture (bycatch) of marine mammals in fishing gear is an issue of current concern throughout EU waters, and beyond. Bycatch in gill and tangle nets represents a significant source of mortality for harbour porpoises in the North Sea and elsewhere. In the North Sea, harbour porpoises are bycaught in the Danish and, to a much lesser extent, UK gill and tangle net fisheries. The total estimated mortality of around 7,200 porpoises per year in the North Sea is thought to exceed sustainable levels.

Most harbour porpoises are bycaught in Danish gillnet fisheries that operate mainly, but not exclusively, in the eastern half of the North Sea and to the east of the SEA-2 blocks. The southern SEA-2 block includes significant amounts of UK gillnet fishing effort. It is not possible to estimate the bycatch mortality of porpoises within the SEA-2 blocks but animals taken there would in any case belong to a population from a wider area.

Bycatches of other cetacean species in the North Sea have been recorded very rarely.

Ship collisions

A potential source of mortality to cetaceans in the North Sea is through collisions with shipping. In other areas, where ships are numerous and cetacean numbers are depleted, this is a serious cause for concern. The frequency of such events in the North Sea is unknown and consequently this has not been identified as a significant source of additional mortality in this region.

Conservation frameworks

Marine mammals are included in a wide range of conservation legislation. All species are listed on Annex IV (Animal and Plant Species of Community Interest in Need of Strict Protection) of the European Commission's Habitats Directive. Under Annex IV, the keeping, sale or exchange of such species is banned as well as deliberate capture, killing or disturbance. The harbour porpoise, bottlenose dolphin, grey seal and harbour seal are also listed in Annex II of the Habitats Directive. Member countries of the EU are required to consider the establishment of Special Areas of Conservation (SACs) for Annex II species. Candidate SACs have been established for the bottlenose dolphin in the Moray Firth and in Cardigan Bay. No candidate SACs have yet been established for the harbour porpoise. A number of terrestrial candidate SACs have been established for grey and harbour seals around the coast of the UK; there are currently no marine candidate SACs for seals.

Under the Agreement on the Conservation of Small Cetaceans of the Baltic and North Seas (ASCOBANS) provision is made for protection of specific areas, monitoring, research, information exchange, pollution control and heightening public awareness. Measures cover the monitoring of fisheries interactions and disturbance, resolutions for the reduction of bycatches in fishing operations, and recommendations for the establishment of specific protected areas for cetaceans.

In UK waters, all species of cetacean are protected under the Wildlife and Countryside Act 1981 and the Wildlife (Northern Ireland) Order 1985. Whaling is illegal under the Fisheries Act 1981. Guidelines to minimise the effects of acoustic disturbance from seismic surveys,

Strategic Environmental Assessment - SEA2

Technical Report 006 - Marine Mammals

agreed with the oil and gas industry, were published by the then Department of the Environment in 1995 and revised in 1998. In 1999, the then Department of the Environment, Transport and the Regions produced two sets of guidelines aimed at minimising disturbance to cetaceans. Grey and harbour seals in the vicinity of fishing nets can be killed to prevent damage to the nets or to fish in the nets under the Conservation of Seals Act 1970. Both species are protected during the breeding season; however, licences to kill seals may be granted for any time of the year for specific listed purposes.

Conclusions

- The SEA-2 blocks are important areas for the three most abundant cetacean species in the North Sea: minke whale, harbour porpoise, and white-beaked dolphin. However, all are also distributed in surrounding areas. Only for the harbour porpoise is there evidence that the SEA-2 blocks (northern and central) are particularly important areas.
- Grey and harbour seals do occur in the SEA-2 blocks but the populations as a whole spend a very small proportion of their time in these areas. Activities in the SEA-2 blocks are unlikely to result in a population effect for seals in the North Sea.
- The most abundant marine mammal species in the North Sea (grey and harbour seals, minke whales, harbour porpoises and white-beaked dolphins) are important predators in this region feeding on a wide range of prey types including a number of important commercial species. The abundance and availability of fish prey is clearly of prime importance in determining the reproductive success or failure of marine mammals in this area, as elsewhere. Changes in the availability of principal forage fish may be expected to result in population level changes of marine mammals but it is currently not possible to predict the extent of this.
- Seals are sensitive to the low frequency sounds generated by oil exploration and production. Small cetaceans are relatively insensitive to low frequencies. Circumstantial evidence suggests that large whales may have good low frequency hearing.
- It is likely that seismic survey work will affect foraging behaviour by any seals and large whales in the SEA-2 blocks. Current mitigation methods are probably generally effective in preventing physical damage.
- There are no reliable data to suggest that vessel noise or drilling noise adversely affect seals or small cetaceans but there are indications that large whales may avoid areas of intense activity.
- Decommissioning work that involves the use of explosives is likely to impact animals in the vicinity, potentially causing injury and death at close range, and causing hearing damage at substantial ranges. Difficulties in observing and monitoring behaviour and the apparent attractiveness of submerged structures means that some marine mammals, especially seals, are likely to be damaged in blasts. Current mitigation methods are unlikely to be totally effective.
- Contaminants, such as polychlorinated biphenyls, DDTs and chlorinated pesticides probably have toxic effects on the reproductive and immune systems of marine mammals. There is little evidence that heavy metals cause substantial toxic responses, except at high concentrations. Cetacean species which feed lower down the food chain

Strategic Environmental Assessment - SEA2

Technical Report 006 - Marine Mammals

may be at risk from exposure to polyaromatic hydrocarbons, although very little is known about current exposure levels or the effects of chronic exposure in marine mammals.

- Major oil spills are likely to result in direct mortality. More generally, marine mammals are less vulnerable than seabirds to fouling by oil, but they are at risk from chemicals evaporating from the surface of an oil slick at sea within the first few days. Individuals may drown as a result of associated symptoms. Neonatal seal pups are at risk from oil coming ashore.
- Bycatch in gill and tangle nets represents a significant source of mortality for harbour porpoises in the North Sea and the total estimated mortality per year is thought to exceed sustainable levels. It is not possible to say how many porpoises may become bycaught in the SEA-2 blocks; animals bycaught there would in any case belong to a population from a wider area. Bycatch is not a significant issue for other species.

1. DISTRIBUTION AND ABUNDANCE

1.1 Introduction

This section summarises information on the distribution and abundance of marine mammals occurring in the North Sea, with particular reference to the SEA-2 blocks as defined by the boundaries shown in Figure 1.

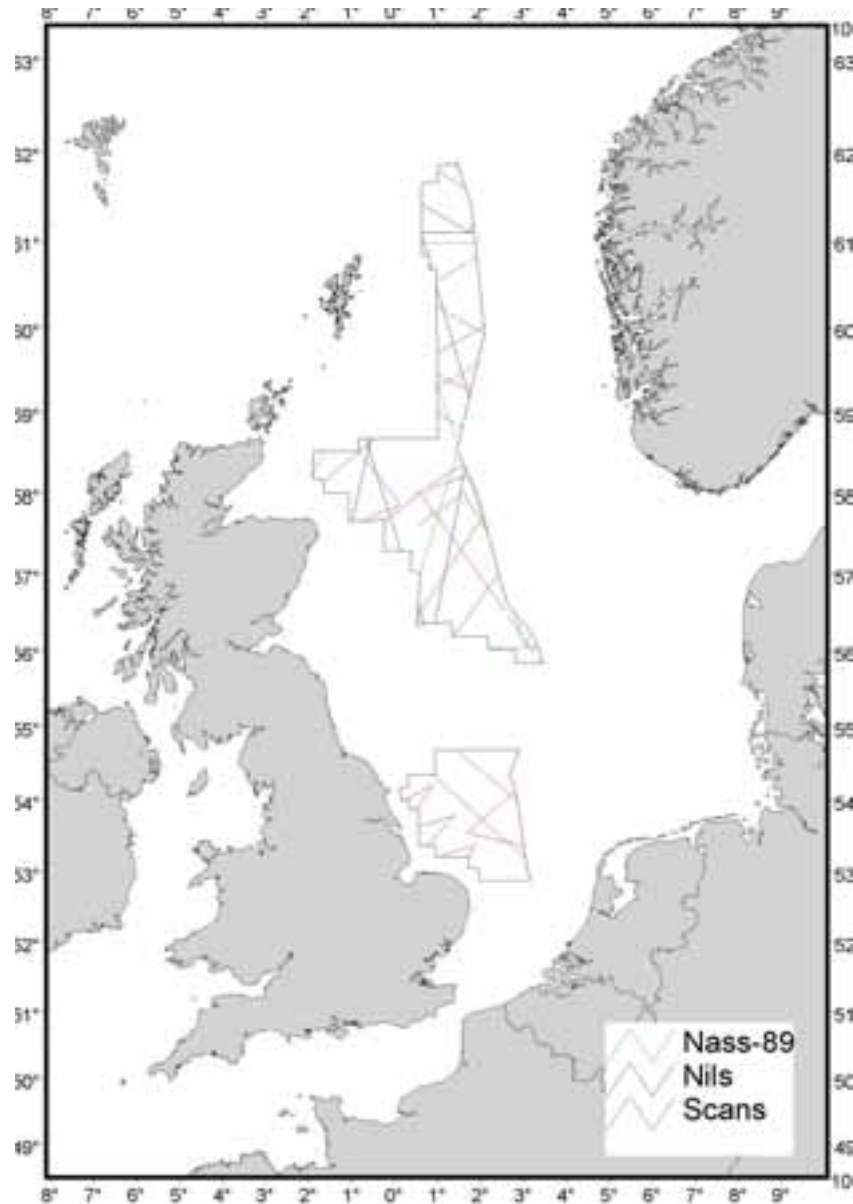


Figure 1. Boundaries of northern, central and southern SEA-2 blocks, and cruise tracks from surveys conducted during SCANS (Hammond et al. 1995), NASS-89 (Øien, 1991) and NILS-95 (Schweder et al. 1997).

Strategic Environmental Assessment - SEA2

Technical Report 006 - Marine Mammals

Eight marine mammal species occur regularly over large parts of the North Sea: harbour seal, grey seal, harbour porpoise, bottlenose dolphin, white-beaked dolphin, Atlantic white-sided dolphin, killer whale and minke whale. A further four cetacean species (Risso's dolphin, common dolphin, long-finned pilot whale and sperm whale) have also been reported fairly regularly from the North Sea. There are occasional at-sea records of a further 11 cetacean species (humpback whale, blue whale, fin whale, sei whale, Sowerby's beaked whale, Cuvier's beaked whale, pigmy sperm whale, false killer whale, northern bottlenose whale, beluga whale and striped dolphin) and five pinniped species (bearded seal, ringed seal, harp seal, hooded seal and walrus).

There is good quantitative information for the most abundant cetacean species from a variety of sightings surveys: the Small Cetacean Abundance in the North Sea (SCANS) survey that took place in June to July 1994 (Hammond *et al.* 1995); the North Atlantic Sightings Surveys (NASS-89) that took place in July 1989 (Bjørge and Øien, 1995) and the Norwegian Independent Line transect Survey (NILS-95) that took place from July to August 1995 (Schweder *et al.* 1997). Figure 1 shows details of cruise tracks for SCANS, NASS-89 and NILS-95 surveys in the SEA-2 blocks.

There are also published sightings from year-round surveys by the UK Seabirds at Sea Team (SAST) conducted between 1979 and 1990 (Northridge *et al.* 1995), from cetacean observations made during seismic surveys in 1996 to 1998 (Stone, 1997; 1998; 2000) and sightings by voluntary observers compiled by the Sea Watch Foundation (e.g. Evans, 1988). Recently, Reid *et al.* (in press) have compiled data from SCANS, the SeaWatch Foundation, seismic surveys, SAST and other European seabird sightings programmes, into an atlas of cetacean distribution around the UK. This will soon be a major source of information on cetacean distribution, but was unavailable for the present study.

Extensive information on the distribution and abundance of grey seals around Britain is available from studies carried out by the Sea Mammal Research Unit (SMRU). These include annual aerial surveys of breeding colonies to estimate pup production and population size, and data from over 100 animals fitted with satellite-relayed data loggers (McConnell *et al.* 1999; SMRU unpublished data). Information on harbour seals is drawn from a variety of sources; the most detailed information is from aerial surveys conducted during the moult by SMRU (SMRU unpublished data).

In the following sections, each of the more abundant species is described with particular reference to its distribution and abundance in the SEA-2 blocks in the North Sea.

1.2 Baleen Whales

1.2.1 Minke whale *Balaenoptera acutorostrata*

Minke whales are widely distributed in the world's oceans. There are three distinct populations: Southern Hemisphere, Northern Pacific and North Atlantic. Their physical characteristics vary geographically, and several sub-species have been proposed. In the North Atlantic the International Whaling Commission recognises three stocks for management purposes: northeastern Atlantic, west Greenland and Canadian east coast. Minke whales in the North Sea are part of the northeastern Atlantic stock.

There is no direct evidence that minke whales in the Northern Hemisphere migrate, but in some areas there appear to be shifts in latitudinal abundance with season. This is true for the North Sea. Minke whales appear to move into the North Sea at the beginning of May

Strategic Environmental Assessment - SEA2

Technical Report 006 - Marine Mammals

and are present throughout the summer until October (Northridge *et al.* 1995). Figure 2 shows the locations of minke whale sightings made during surveys and from platforms of opportunity. There are sightings throughout the central and northern North Sea particularly in the west. There are many records in the central SEA-2 block.

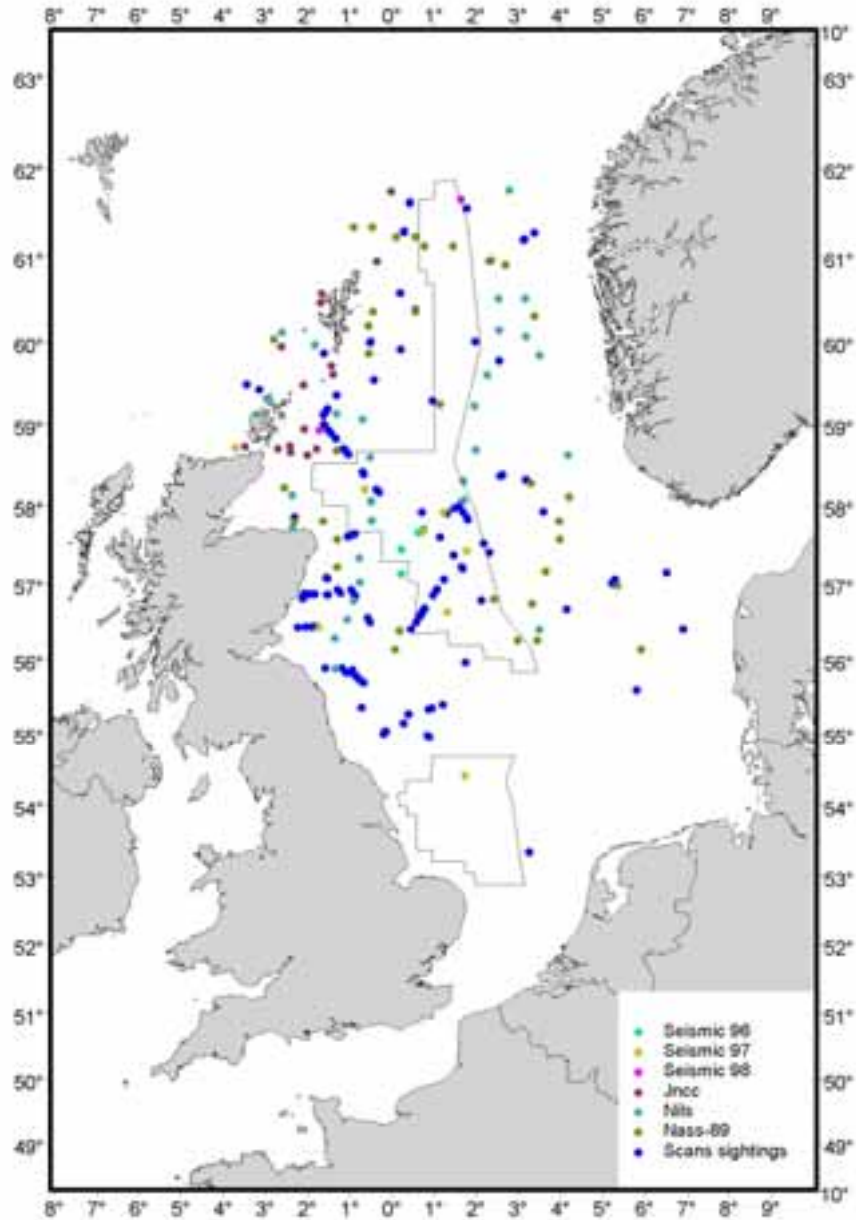


Figure 2. Minke whale sightings made during SCANS (Hammond *et al.* 1995), NASS-89 (Øien, 1991), NILS-95 (Schweder *et al.* 1997), SAST (Pollock *et al.* 2000) and seismic (Stone 1997, 1998, 2000) surveys.

Strategic Environmental Assessment - SEA2

Technical Report 006 - Marine Mammals

Figure 3 shows a fitted surface of minke whale density (schools.km⁻²) using spatial modelling of the SCANS survey data (Burt *et al.* 1999). Because the average minke whale school size in the North Atlantic is only slightly greater than one, these values also represent total density. Highest densities were recorded in the northwest North Sea, particularly off the mainland coast of Scotland. This high density area extends into the western part of the central SEA-2 block.

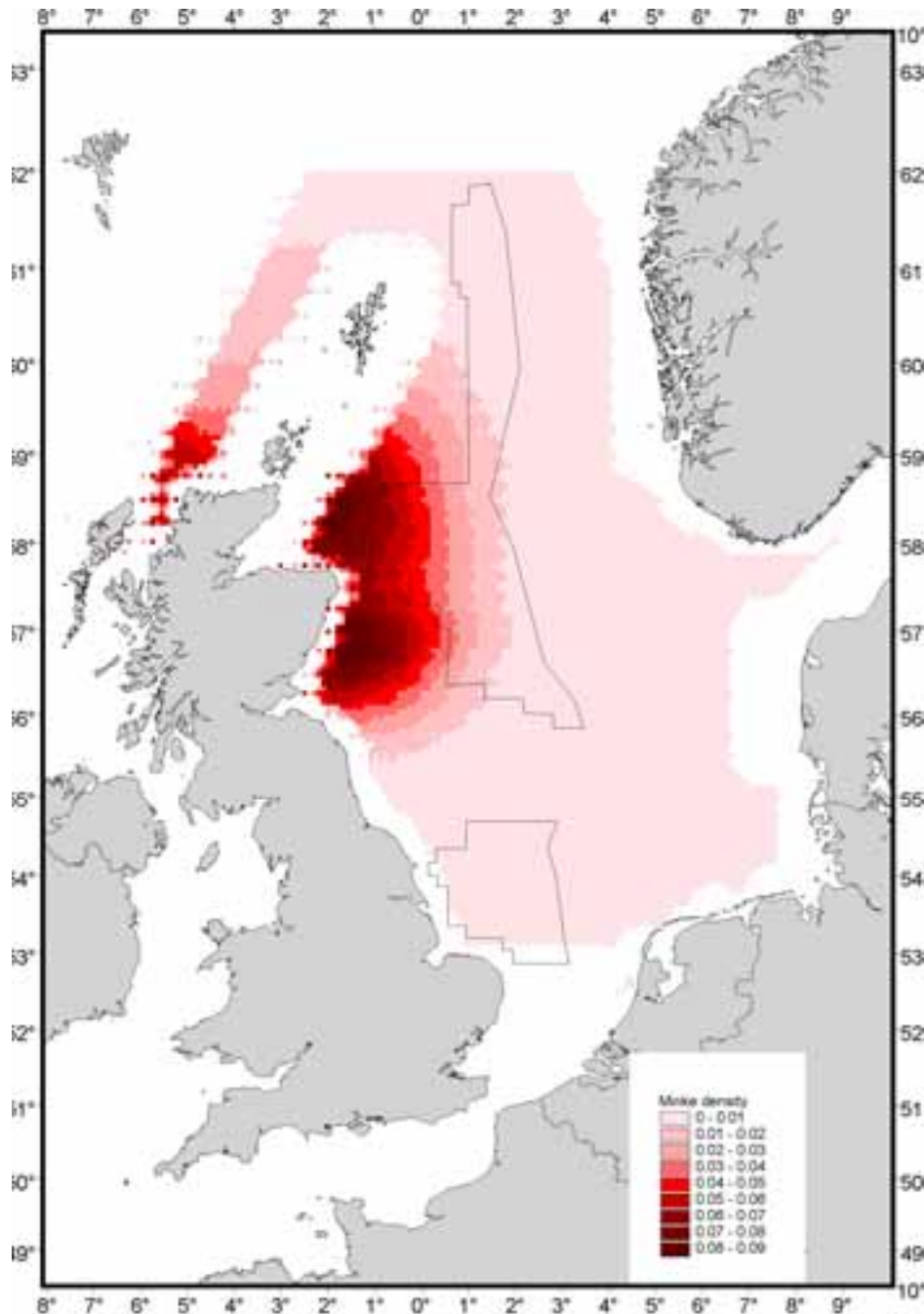


Figure 3. Minke whale density (schools.km⁻²) predicted from spatial modelling of the SCANS data (Burt *et al.* 1999; Hammond *et al.* 1995). Mean school size is approximately 1.

Strategic Environmental Assessment - SEA2

Technical Report 006 - Marine Mammals

The estimated summer abundance of minke whales in North Sea survey blocks of the SCANS survey was 7,200 (approximate 95% confidence interval 4,700 – 11,000). This estimate includes shelf waters to the west of Shetland and Orkney. The total SCANS estimate for the North Sea, Celtic Sea, Channel, Skagerrak and Kattegat was 8,445 (95% confidence interval 5,000 – 13,500).

Schweder *et al.* (1997) generated estimates of the number of minke whales in the North Sea, north of 56°N, of 5,430 (SE=1,870) for 1989 and 20,300 (SE=5,240) for 1995. These estimates are approximately 8-18% of the estimated size of the northeast Atlantic stock of 67,000 whales in 1989 and 112,000 whales in 1995 (Schweder *et al.* 1997).

The predicted density of minke whales from the spatial modelling does not appear to accommodate the SCANS data in the south-eastern part of the central SEA-2 block. This may be because the relatively small data set could only be supported by a relatively simple model including only latitude, longitude and distance from the coast as covariates.

Summarising all available information, it is clear that the central SEA-2 block in particular, as well as the northern SEA-2 block, are important areas for minke whales in summer.

1.3 Toothed whales

1.3.1 Harbour porpoise *Phocoena phocoena*

Harbour porpoises are restricted to temperate and sub-arctic waters on the continental shelves of the Northern Hemisphere. They are distributed around the fringes of the North Atlantic Ocean basin, extending from North Carolina, off the United States, to Greenland and northern Norway and south through European waters as far as North Africa. Walton (1997) found significant genetic differences between female porpoises from the North Sea collected north and south of 56°N, and between these animals and those from the west coast of Scotland. Tolley *et al.* (1999) found some evidence for a cline in genetic variation from northern Scotland, through Shetland to the Norwegian coast. There was a significant difference between porpoises from Scotland and Norway if the Shetland samples were removed from the analysis. Animals in the eastern North Atlantic are not known to perform long migrations, but satellite-tagged animals in Canada and Denmark have been shown to move some hundreds of kilometres within a year.

Figure 4 shows the location of porpoise sightings made during SCANS, NASS-89 and seismic surveys. There are many records in southern, central and northern SEA-2 blocks. Figure 5 shows the distribution of porpoise density (in schools.km⁻²) calculated from sightings made from ships during the SCANS surveys (Burt *et al.* 1999). Mean school size for the area was approximately 1.5. Highest densities were observed north of 56°N, mostly in a north-south band between 1°E and 3°E. These areas of high density fall mostly within the northern and central SEA-2 blocks. The density of porpoises in inshore areas around Shetland, and the North Sea coasts of Norway, Sweden, Denmark, Germany and the Netherlands are shown blank in Figure 5 only because these areas were surveyed from the air and the data could not be modelled in the same way as the shipboard sightings.

The estimated summer abundance of harbour porpoises in North Sea survey blocks of the SCANS survey was 268,452 (approximate 95% confidence interval 210,000 – 340,000). This estimate includes shelf waters to the west of Shetland and Orkney. The total SCANS estimate for the North Sea, Celtic Sea, Channel, Skagerrak and Kattegat was 341,366 (95% confidence interval 260,000 – 449,000). Bjørge and Øien (1995) estimated that there were

Strategic Environmental Assessment - SEA2

Technical Report 006 - Marine Mammals

82,600 porpoises in the North Sea north of 56°N. This estimate is known to be biased downwards because the probability of detection on the transect line was assumed to be one. There are no other harbour porpoise abundance estimates for the north-eastern North Atlantic.

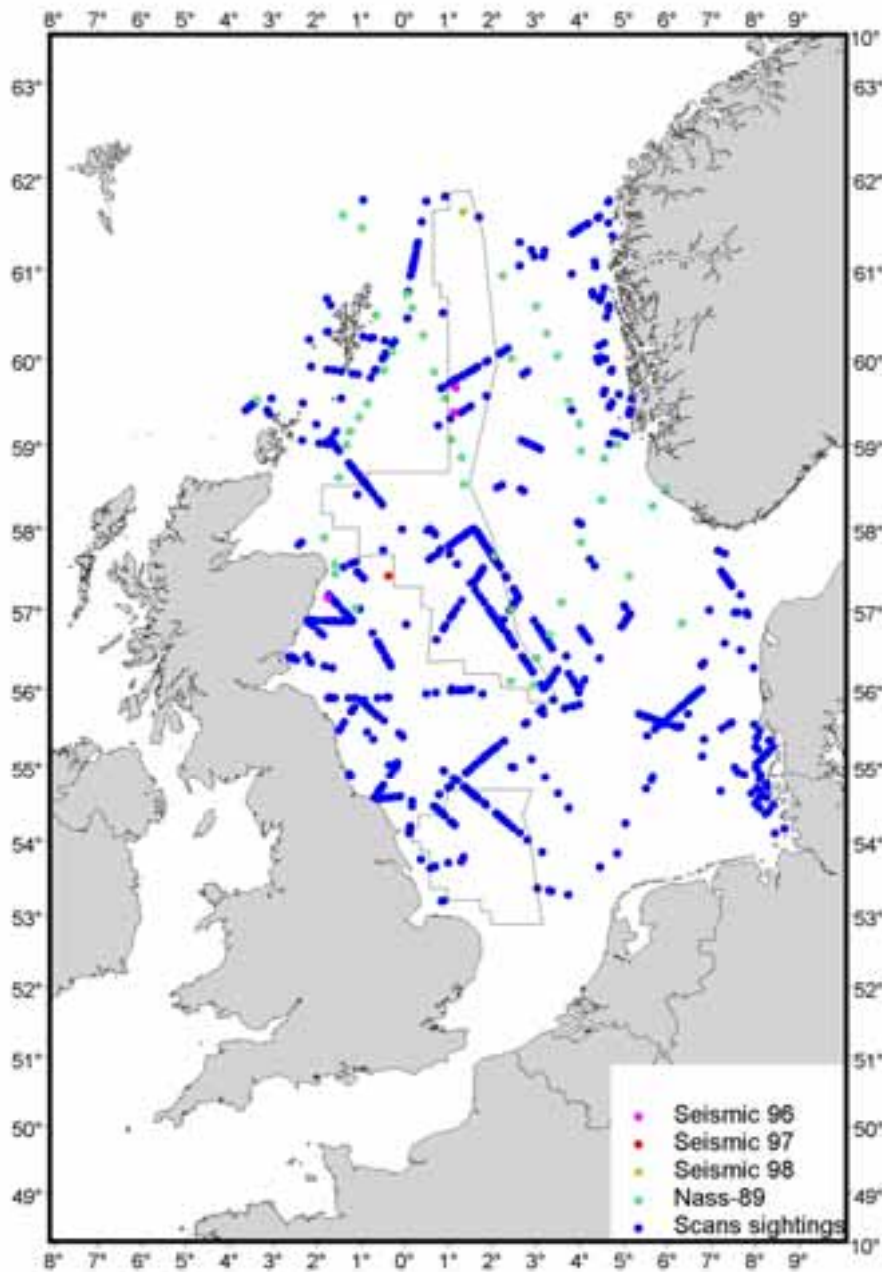


Figure 4. Harbour porpoise sightings made during SCANS (Hammond et al. 1995), NASS-89 (Øien, 1991) and seismic (Stone 1997, 1998, 2000) surveys.

Strategic Environmental Assessment - SEA2

Technical Report 006 - Marine Mammals

The density of harbour porpoises predicted from the spatial modelling does not exactly mimic the sightings distribution from the SCANS survey. This is to be expected because the model predicted density based on latitude, longitude, sea depth and distance from the coast as covariates, as well a two interaction terms. The predicted density in unsurveyed areas is determined by the relationship between observed density and these covariates in surveyed areas. It is our best prediction of density at this time of year (July) from the available data.

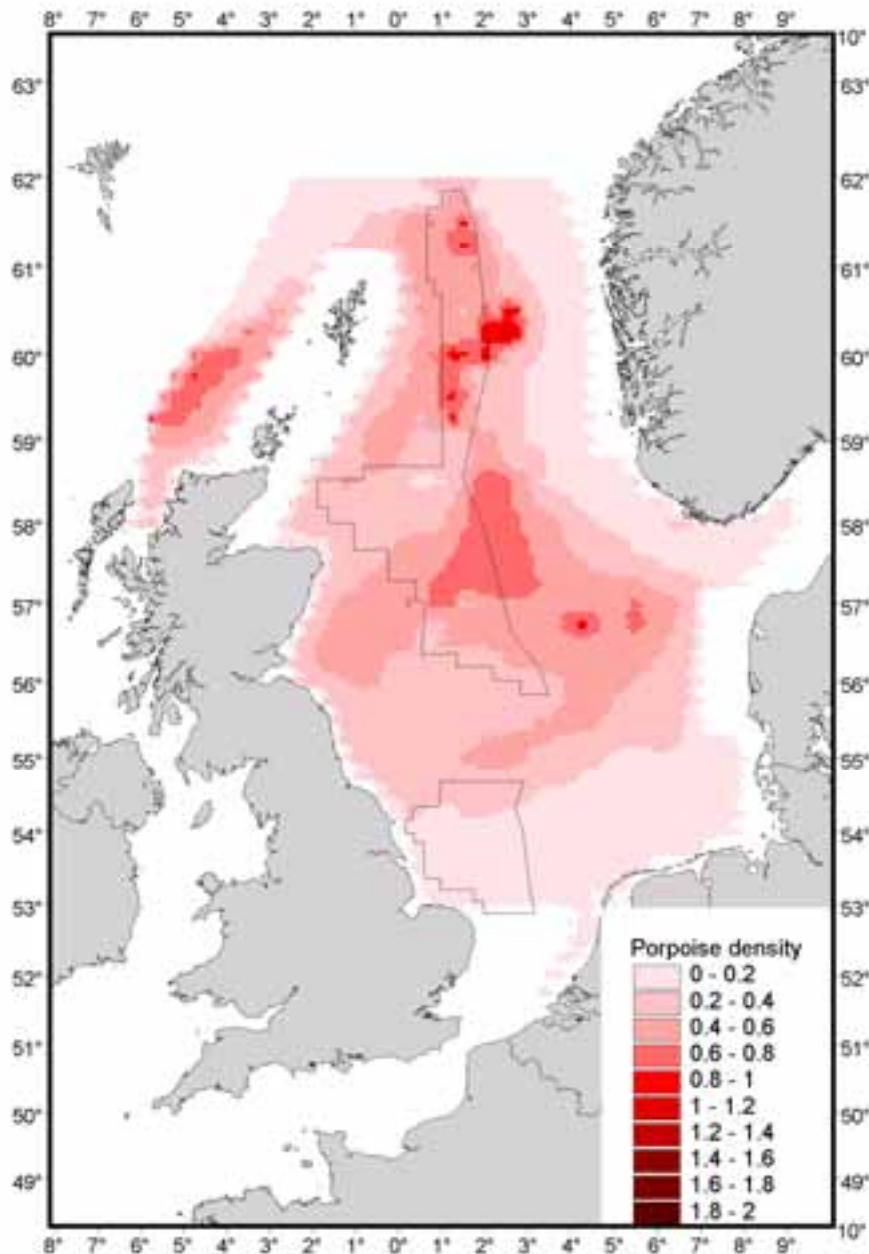


Figure 5. Harbour porpoise density (schools.km⁻²) predicted from spatial modelling of the SCANS data (Burt et al. 1999; Hammond et al. 1995). Mean school size is approximately 1.5.

Strategic Environmental Assessment - SEA2

Technical Report 006 - Marine Mammals

SAST data from 1979 to 1991 show the highest rate of porpoise sightings in April to June (the calving season), and July to September. These changes are believed to be the result of porpoises moving into the northern North Sea from Norwegian waters (Northridge *et al.* 1995). More information on distribution will be available from Reid *et al.* (in press).

Summarising all available information, it is clear that the northern and central SEA-2 blocks are very important areas for harbour porpoises, at least in summer, and that the southern SEA-2 block is also important, despite the predicted low densities in summer.

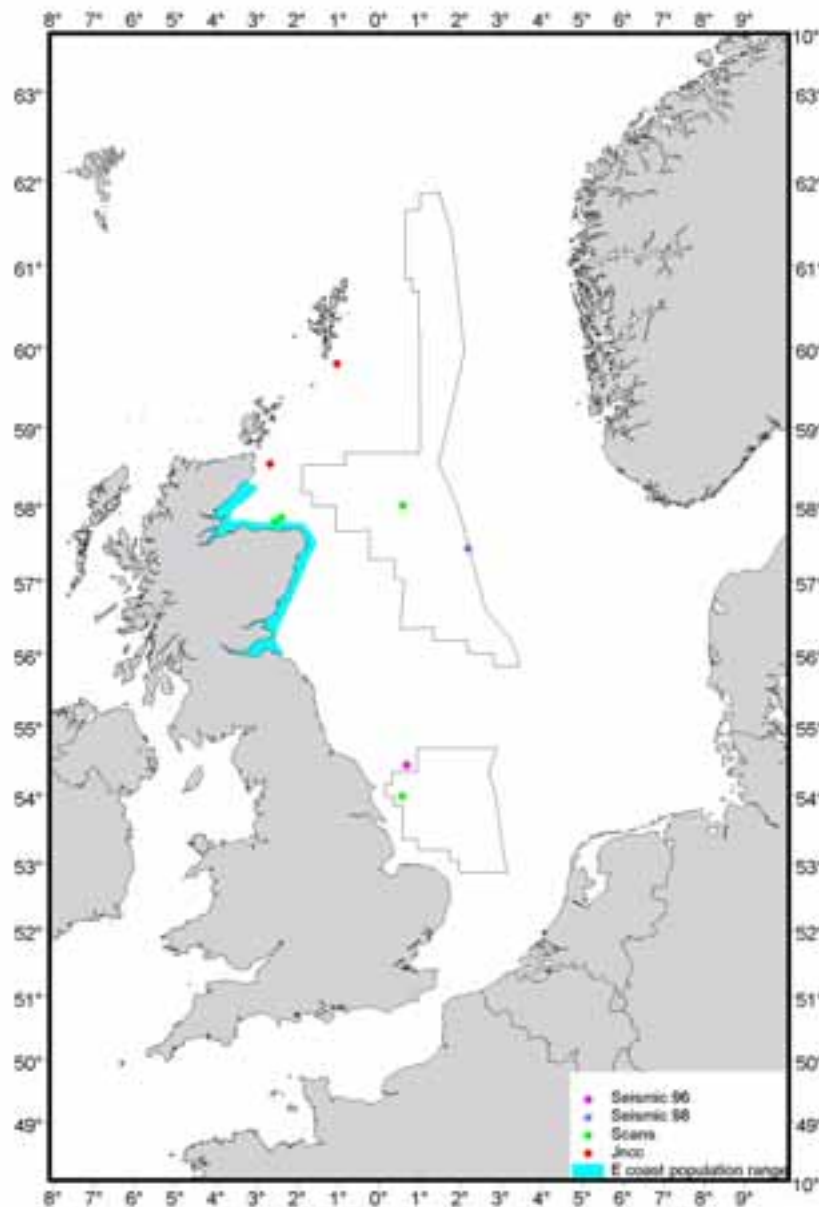


Figure 6. Bottlenose dolphin sightings made during SCANS (Hammond *et al.* 1995), SAST (Pollock *et al.* 2000) and seismic (Stone 1997, 1998, 2000) surveys, and the current known distribution of the Scottish east coast population (Wilson *et al.* 1997).

Strategic Environmental Assessment - SEA2

Technical Report 006 - Marine Mammals

1.3.2 Bottlenose dolphin *Tursiops truncatus*

Bottlenose dolphins occur world-wide. They are found in virtually all tropical and temperate seas and occupy most marine habitats from the open ocean to coastal lagoon. Their distribution appears to be linked to sea temperature; in the North Atlantic resident coastal populations extend only as far north as Scotland. However, the species is caught in the Faroes drive fishery, suggesting that it may be more abundant and widespread than is generally thought.

In the North Sea bottlenose dolphins are rarely sighted outside coastal waters (Figure 6). However, just to the west of the central SEA-2 block there is a population of dolphins, with an estimated size of 129 individuals (95% confidence interval 110–174), whose distribution is centred on the Moray Firth (Wilson *et al.* 1997). Although these dolphins are considered to be resident in the inner Moray Firth, numbers there decrease during winter. Because sightings elsewhere around the coast do not increase accordingly, it is possible that animals from this population move offshore at this time of year.

1.3.3 White-beaked dolphin *Lagenorhynchus albirostris*

White-beaked dolphins are restricted to the North Atlantic. In the eastern North Atlantic their range extends from the British Isles to Spitsbergen. They are mainly distributed over the continental shelf and in the North Sea are much more numerous within about 200 nm of the Scottish and Northeastern English coasts than anywhere else (Northridge *et al.* 1995). The summer abundance of white-beaked dolphins in the North Sea was estimated from the North Sea blocks of the SCANS survey as 7,856 (95% confidence interval 4,000–13,300). This estimate includes shelf waters to the west of Shetland and Orkney.

White-beaked dolphins are most commonly sighted in the central part of the North Sea between 54°N and 59°N (Figure 7). Their distribution falls across the central SEA-2 block, with some sightings in the southern SEA-2 block. White-beaked dolphins are present year round in the North Sea, with some suggestion of a seasonal aggregation around the Northeast English coast during April – June (Northridge *et al.* 1997).

1.3.4 Atlantic white-sided dolphin *Lagenorhynchus acutus*

Atlantic white-sided dolphins are confined to the North Atlantic. They share most of their range with the white-beaked dolphin, but in the eastern North Atlantic they adopt a mainly offshore distribution and are consequently rarer than white-beaked dolphins over shelf waters. At sea the two species can be difficult to distinguish and there is a tendency for them to be recorded simply as *Lagenorhynchus spp.*

In the North Sea, Atlantic white-sided dolphins have been recorded during a number of surveys. Sightings where species identity has been confirmed are shown in Figure 8. They appear to be most common in the northwestern parts of the North Sea, particularly to the west of the central SEA-2 block. Their presence is seasonal, with the bulk of sightings occurring between May and September (Northridge *et al.* 1997).

Strategic Environmental Assessment - SEA2
Technical Report 006 - Marine Mammals

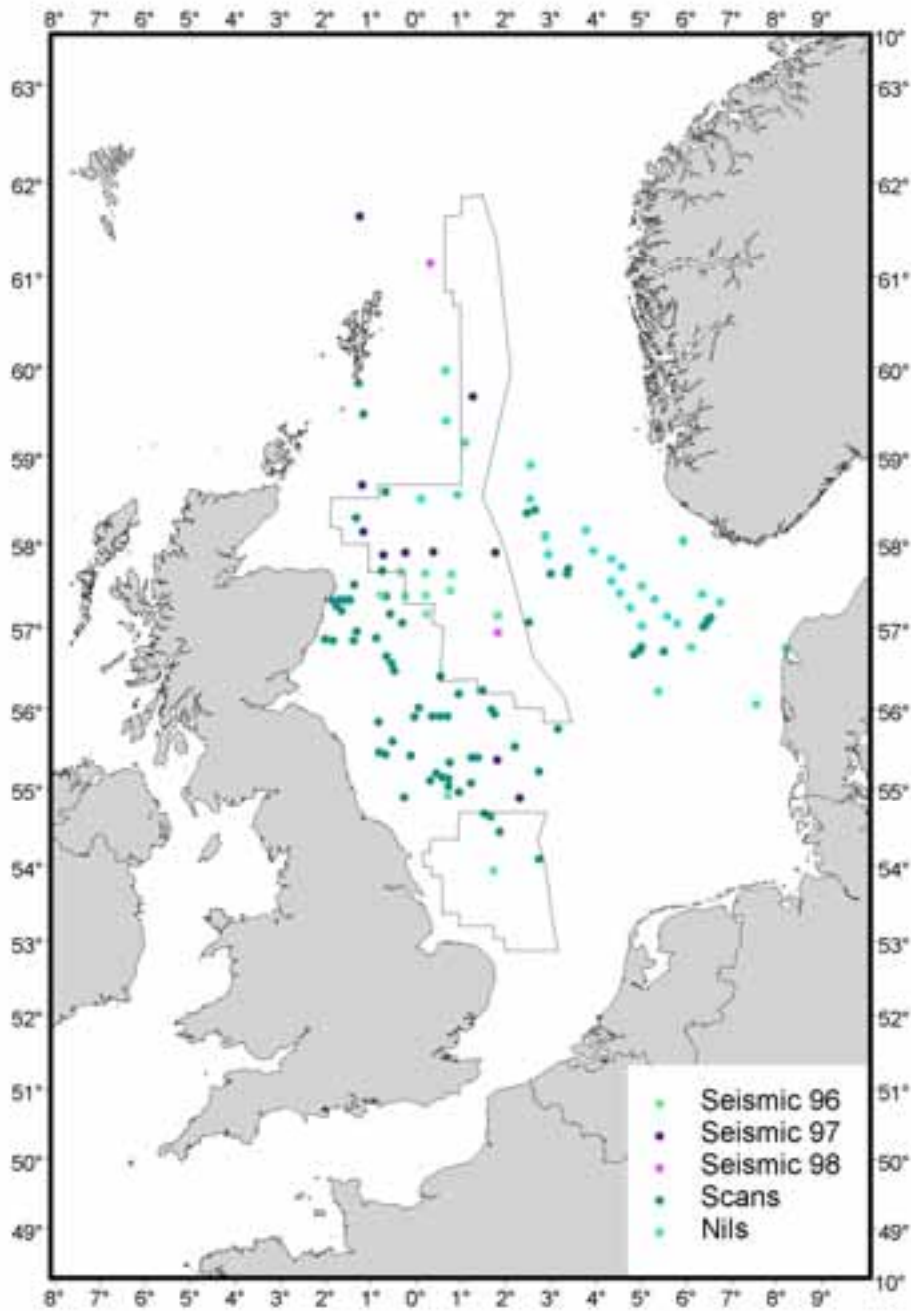


Figure 7. White-beaked dolphin sightings made during SCANS (Hammond et al. 1995), NILS-95 (Schweder et al. 1997) and seismic (Stone 1997, 1998, 2000) surveys.

Strategic Environmental Assessment - SEA2
Technical Report 006 - Marine Mammals

The SCANS survey estimated 11,760 *Lagenorhynchus* dolphins (white-beaked plus white-sided) in the North Sea (95% confidence interval 5,900–18,800). This estimate includes shelf waters to the west of Shetland and Orkney. 1,097 Atlantic white-sided dolphins were taken in the Faroes drive fishery in the period 1995 to 1999. They are occasionally involved in mass stranding events.

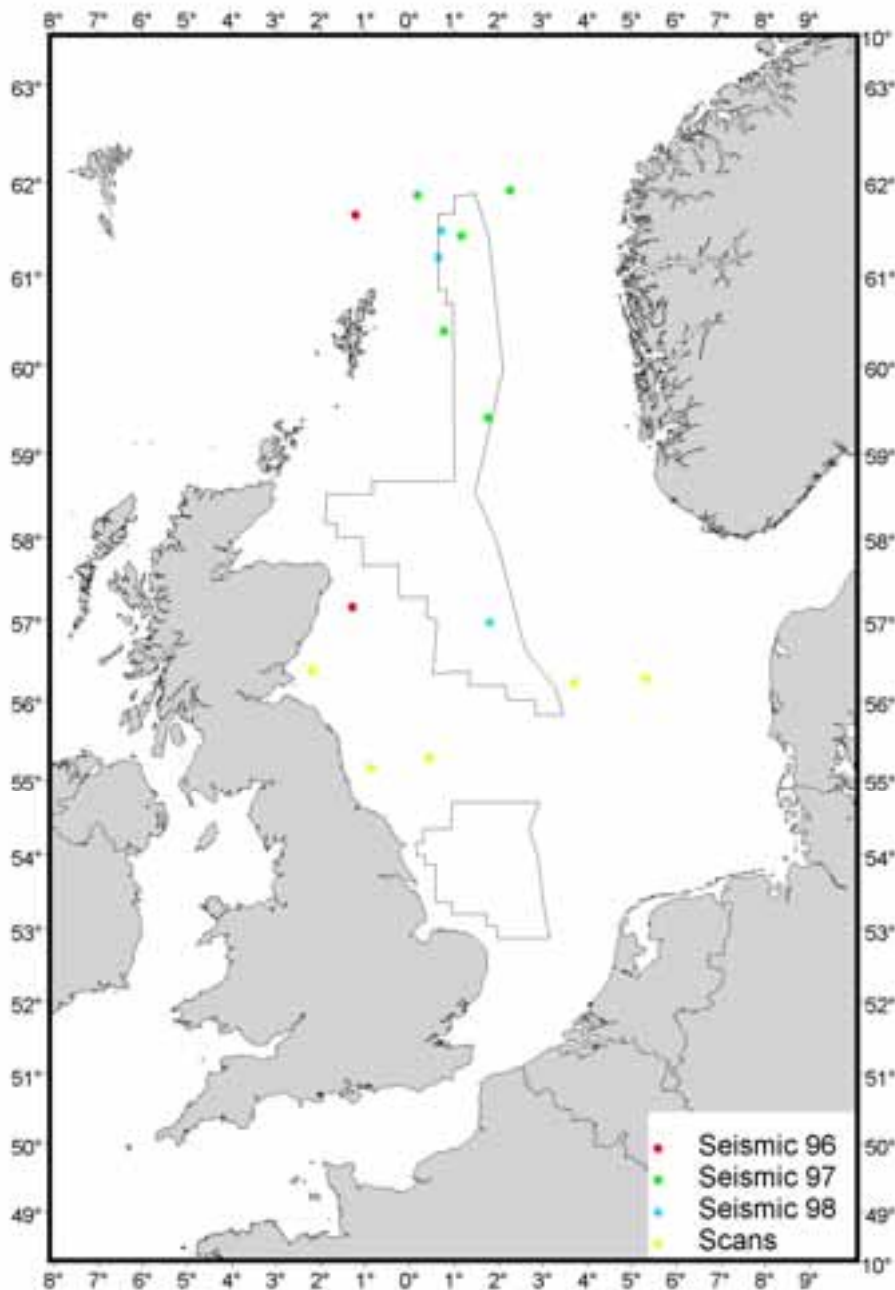


Figure 8. Atlantic white-sided dolphin sightings made during SCANS (Hammond et al. 1995) and seismic (Stone 1997, 1998, 2000) surveys.

Strategic Environmental Assessment - SEA2

Technical Report 006 - Marine Mammals

1.3.5 Killer whale *Orcinus orca*

Killer whales are found in all oceans and most seas. In the eastern North Atlantic they occur in most areas from coastal fjords to oceanic waters. Any migrations appear to be driven by prey abundance and are therefore region-specific. Killer whales have been observed throughout the northwestern North Sea (Figure 9) including being seen around commercial trawlers during discarding of fish (Couperus, 1994).

There have been sightings in the North Sea north of approximately 58°N (Reid *et al.* in press) in all months except October. Most records are from the northern part of the northern SEA-2 block and in the northeastern part of the central SEA-2 block. Association of killer whales with oil platforms has been reported.

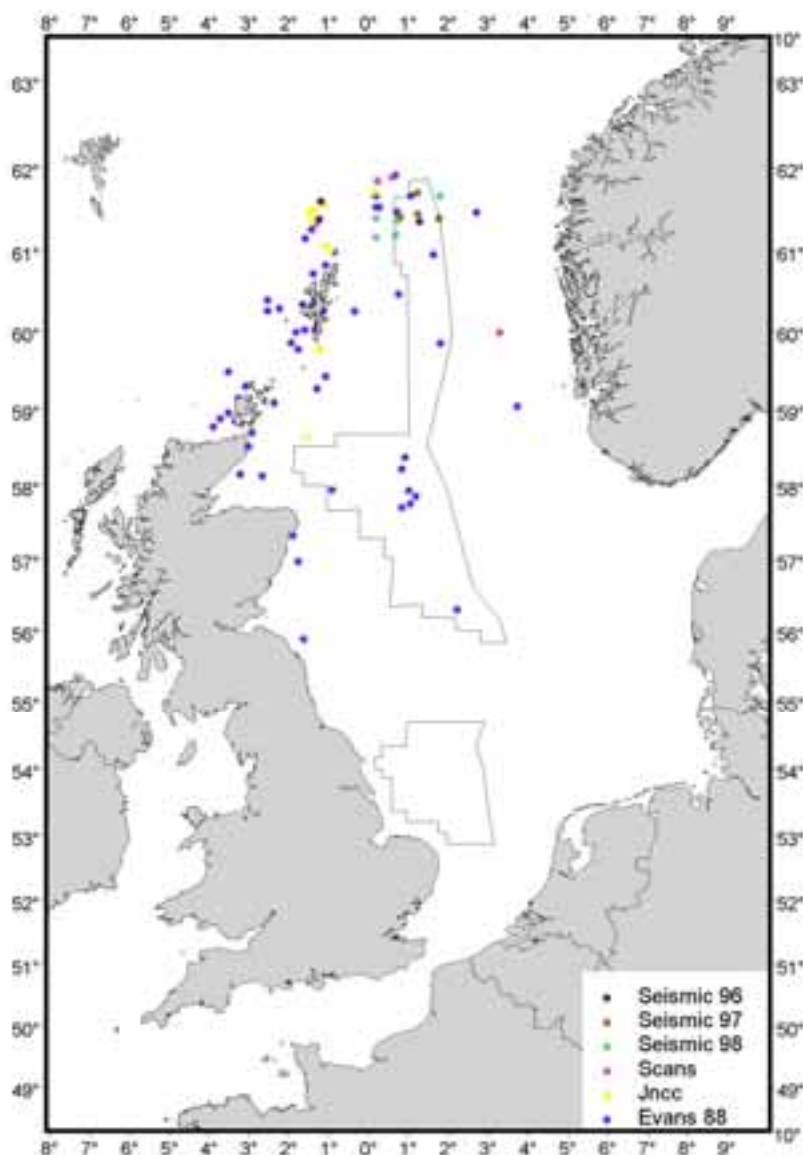


Figure 9. Killer whale sightings made during SCANS (Hammond *et al.* 1995), SAST (Pollock *et al.* 2000) and seismic (Stone 1997, 1998, 2000) surveys, and from Evans (1988).

1.3.6 Risso's dolphin *Grampus griseus*

Risso's dolphins have a wide distribution and are thought to specialise in catching squid. They are capable of deep dives and are generally found in oceanic waters.

Most of the sightings recorded by Reid *et al.* (in press) are from the northern North Sea, around Shetland, Orkney, Fraserburgh, Aberdeen and Berwick, with only three sightings in the central North Sea (Figure 10).

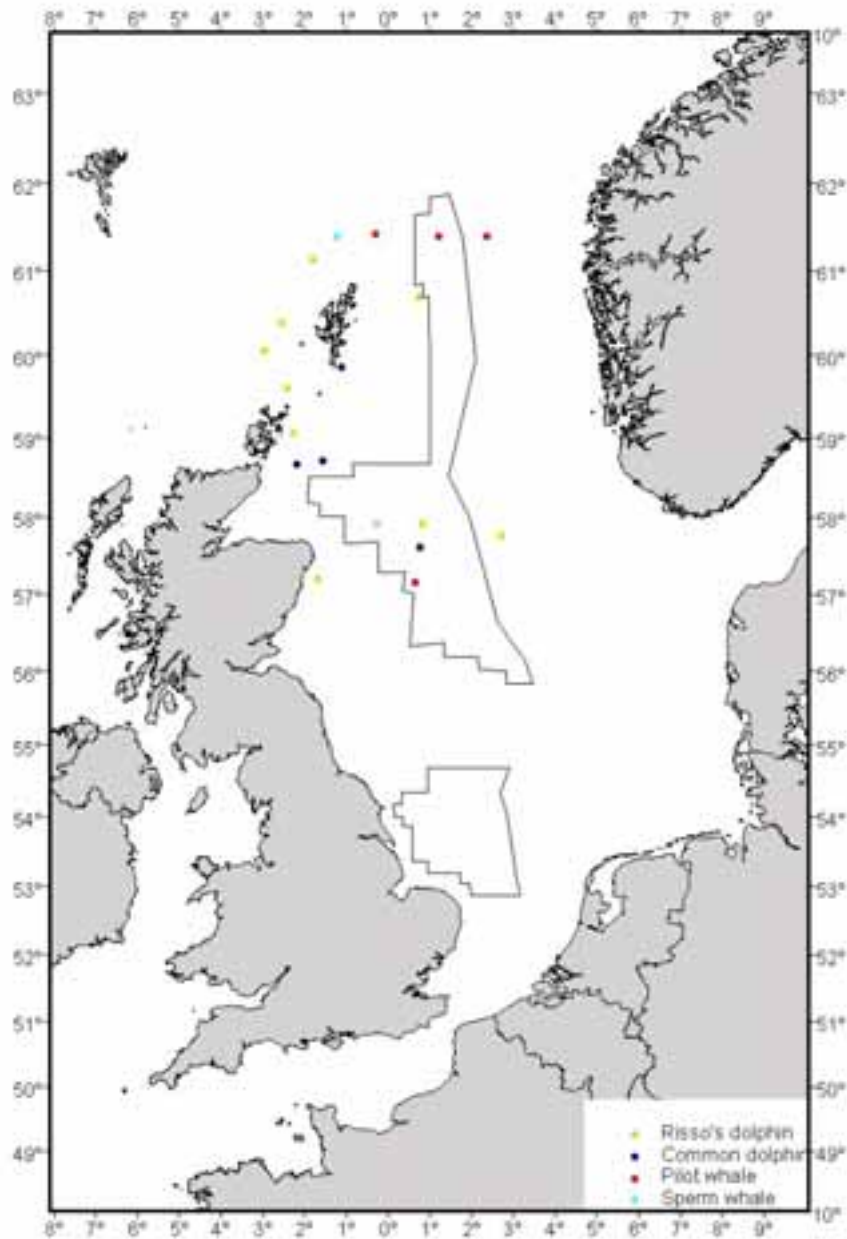


Figure 10. Risso's dolphin, short-beaked common dolphin, long-finned pilot whale, and sperm whale sightings made during SCANS (Hammond *et al.* 1995), SAST (Pollock *et al.* 2000) and seismic (Stone 1997, 1998, 2000) surveys.

Strategic Environmental Assessment - SEA2

Technical Report 006 - Marine Mammals

1.3.7 Short-beaked common dolphin *Delphinus delphis*

Short-beaked common dolphins have a world-wide distribution in tropical and temperate waters. They are generally found in oceanic and shelf-edge waters but do occasionally use coastal areas. Around the British Isles, the species is most often reported from the west coast, especially the Celtic Sea. However, there have been infrequent sightings during surveys in the North Sea, generally during summer months (Figure 10). The species is also occasionally stranded along the UK North Sea coast (Reid and Patterson, 1998).

1.3.8 Long-finned pilot whale *Globicephala melas*

Long-finned pilot whales occur in both hemispheres. In the Northern Hemisphere they are only present in the North Atlantic and western Mediterranean. There are an estimated 778,000 whales in the eastern North Atlantic, based on NASS-89 survey results. There has been a sustained catch of pilot whales off the Faroes for many hundreds of years, during which period more than 230,000 whales have been taken. Pilot whales are capable of diving to great depth and are also one of the most commonly mass-stranded whales.

Pilot whales are probably not very common in the North Sea. There are a few sightings in the north (Figure 10). There are also records from the southwestern North Sea during June, July, August, and December (Reid *et al.* in press). Pilot whales are seen in Shetland waters in most months of the year; historically, there were enough whales around Shetland to support a drive fishery. The largest catch on record in this fishery was 1,540 animals caught in 1845 (Shetland Sea Mammal Group, 2001). Strandings along the UK North Sea coast have increased since 1947 (Sheldrick, 1976); there were a number of mass strandings involving more than 150 animals in total between November 1982 and January 1985 (Martin *et al.* 1987).

1.3.9 Sperm whale *Physeter macrocephalus*

Sperm whales have a wide distribution that includes most seas and all oceans. The world population of sperm whales has been estimated at 2 million individuals, making them the most abundant species of large whale in the world. Males migrate to high latitudes to feed and, as a result, all sperm whales sighted or stranded in the North Sea to date have been males.

Sperm whales are normally distributed to the west and north of the UK on, and beyond, the continental shelf break. They have also been recorded fairly regularly in Orkney and Shetland waters, with sightings and strandings reported in most months (Shetland Sea Mammal Group, 2001; Anon, 1999; Booth, 1998). A number of sightings and strandings have been recorded from the North Sea in the last decade including a sighting of two individuals off Peterhead, Aberdeenshire in 1998. Figure 10 shows the location of a sighting made during seismic surveys in the Central North Sea SEA-2 block. Since 1994 there have been strandings on German, Dutch, Belgian, Danish and British North Sea shores (Reid and Patterson, 1998; Simmonds, 1997) including live strandings in the Firth of Forth (in 1997), Orkney and Belgium (Simmonds, 1997).

1.4 Pinnipeds

1.4.1 Harbour (or common) seal *Phoca vitulina*

Harbour seals are one of the most widespread pinniped species and have a practically circumpolar distribution in the Northern Hemisphere. Harbour seals haul out every few days on tidally exposed areas of rock, sandbanks or mud. Pupping occurs on land from May to July, peaking in the second half of June. The moult is centred around August. Thus from May to August, harbour seals are ashore more often than at other times of the year.

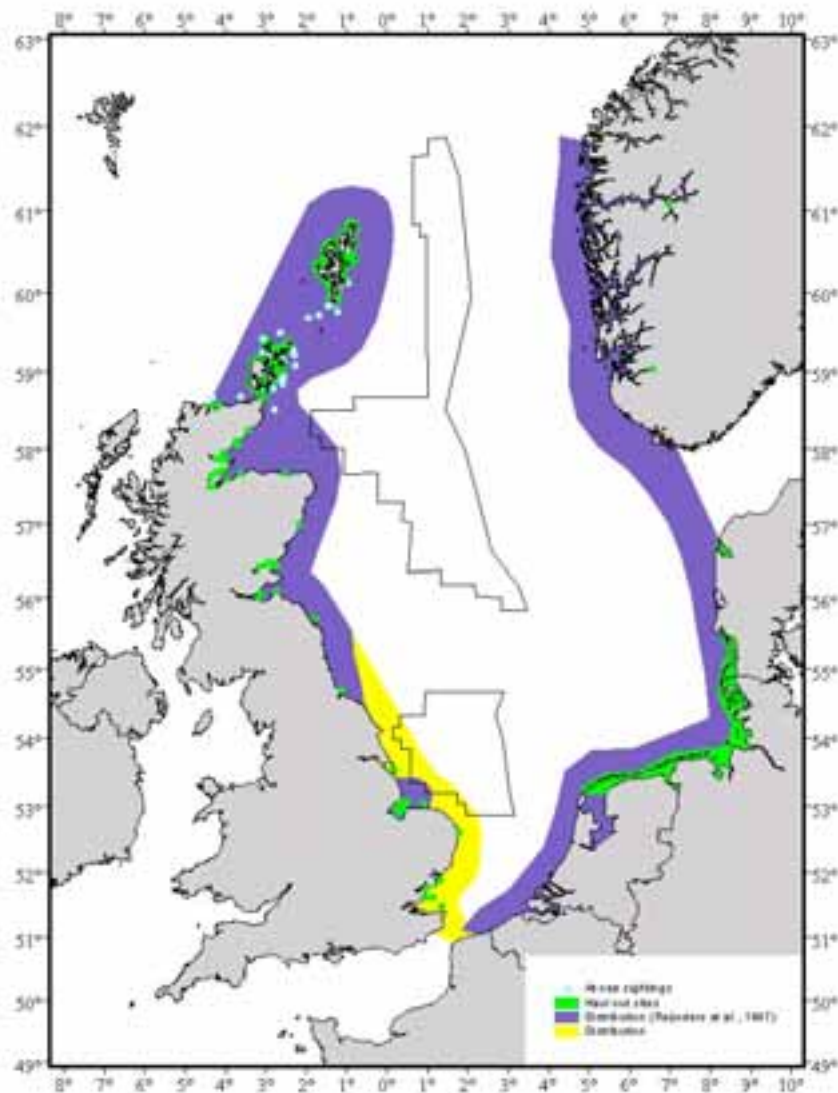


Figure 11. Harbour seal distribution around the North Sea extended from Reijnders et al. (1997). Also shown are haul-out sites during the moult (SMRU unpublished data; Bjørge 1991) and at-sea sightings from SAST surveys (Pollock et al. 2000). Distribution outside the North Sea not shown.

Strategic Environmental Assessment - SEA2

Technical Report 006 - Marine Mammals

There are four sub-species. Only the eastern Atlantic harbour seal, *Phoca vitulina vitulina*, occurs in the North Sea. A minimum estimate of population size for this sub-species based on counts at haul-out sites is around 70,000 individuals. However, counts of seals hauled out on land during the moulting season (August) represent only about 60-70% of the total population. Approximately 54% of this subspecies breeds in the North Sea. Table 1 shows the minimum estimates of populations size for areas in the North Sea based on aerial surveys of animals hauled out on land during the moult or the pupping season.

Table 1. Counts of harbour seals in the North Sea

Area	Count (year)
UK - English East coast	3,700 (1999)
UK - Scottish East coast	1,500 (1996-97)
UK – Shetland	6,000 (1996-97)
UK – Orkney	8,500 (1996-97)
Denmark	2,100 (2000)
Germany	11,500 (2000)
The Netherlands	3,300 (2000)
Norway, south of 62°N	1,200 (1996-98)

In general, harbour seals forage around their haul-out sites throughout the year and are unlikely to be found more than 60 km from shore (see section 2).

Figure 11 shows the general distribution of harbour seals in the North Sea, extended from Reijnders *et al.* (1997) to take into account additional known haul-out sites in the south-western North Sea. At-sea sightings from Pollock *et al.* (2000) are also shown. As described in more detail in section 2, harbour seals are unlikely to occur in the northern or central SEA-2 blocks in significant numbers and probably occur in significant numbers only in the southwestern part of the southern SEA-2 block.

1.4.2 Grey seal *Halichoerus grypus*

There are three recognised populations of grey seals which breed in the northwest Atlantic (primarily on Sable Island, Canada and in the Gulf of St Lawrence), in the Baltic Sea, and in the northeast Atlantic (primarily on offshore islands around the British Isles but also in Iceland, the Faroe Islands, France, the Netherlands, central and northern Norway, and around the Kola peninsula in Russia). They haul out on land between foraging trips and for breeding, when they form large aggregations. Timing of pupping differs throughout the range of the species. In the North Sea, pupping occurs from October (in the north) to January (in the south). Moulting occurs in February and March.

The northeast Atlantic population has been increasing in size by around 6% annually since the 1960's, as measured by monitoring those seals that breed in Britain. Its current size is estimated at around 130,000 to 140,000 individuals, of which approximately 70,000 are associated with colonies in the North Sea. Table 2 summarises information on the estimated population size of grey seals breeding in the North Sea. Abundance estimates are mainly based on counts of pups.

Strategic Environmental Assessment - SEA2

Technical Report 006 - Marine Mammals

Table 2. Sizes of grey seal populations the North Sea

Area	Population size (year)
Shetland	3,300 (1977)
Orkney	50,300 (1999)
UK North Sea coast	14,100 (1997-999)
Norway	3,000-3,500 (1986)
Germany	71 (1991)
The Netherlands	500 (2000)

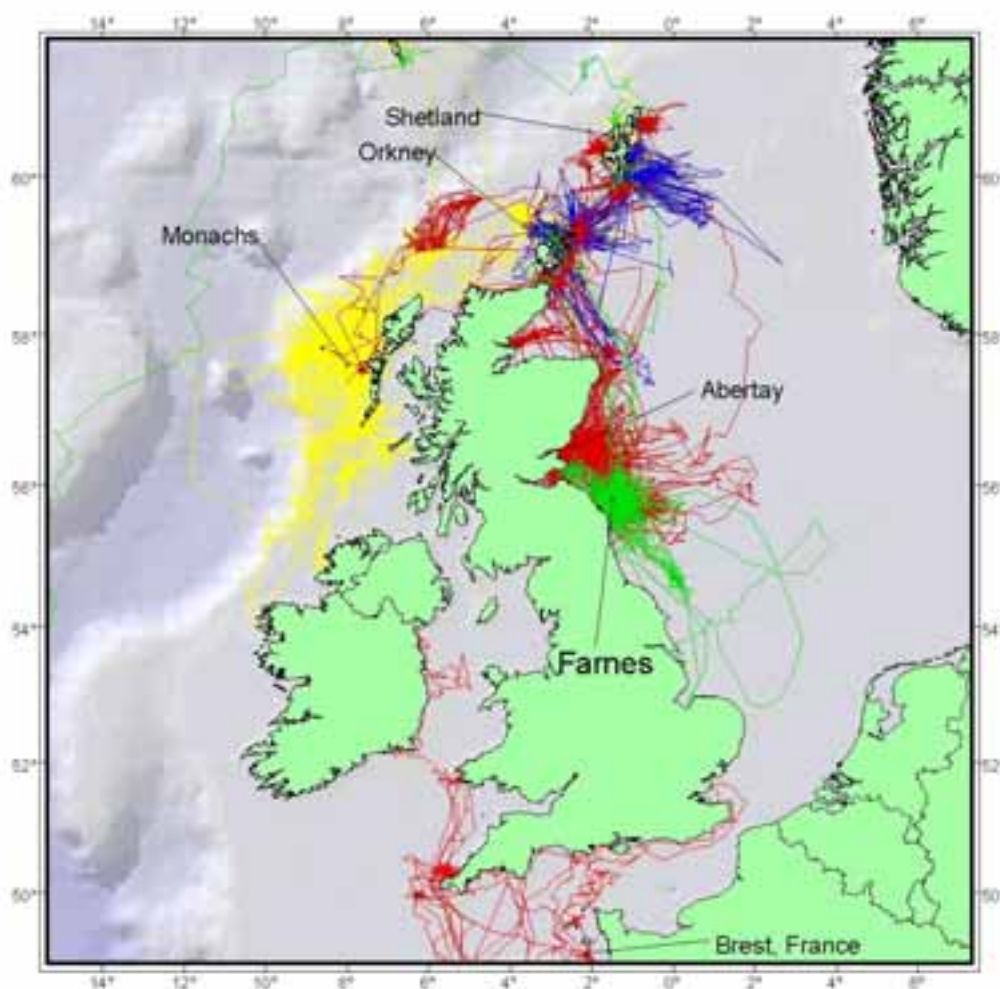


Figure 12. Tracks of 108 grey seals fitted with satellite-relay data loggers over a period of about 10 years (McConnell et al. 1999; SMRU unpublished data).

Successful breeding was first recorded in the Wadden Sea in the Netherlands (at Terschelling) in the 1980s. Pup numbers there have increased from just two in 1985 to more than 100 in 2000. Along the Norwegian west coast up to 62°N, tagging of 21 pups in 2000 confirmed that grey seals still breed in this area.

Note that most of the population will be on land for several weeks from October to December, and again in February and March during the moult. Densities at sea are likely to

Strategic Environmental Assessment - SEA2

Technical Report 006 - Marine Mammals

be lower during this period than at other times of the year. Further information on distribution and movements of grey seals comes from using numbered tags attached to the flippers of pups. These indicate that young seals disperse widely in the first few months of life. Pups marked in the UK have, for example, been recaptured or recovered along the North Sea coasts of Norway, France and The Netherlands, mostly during their first year (Wiig, 1986).

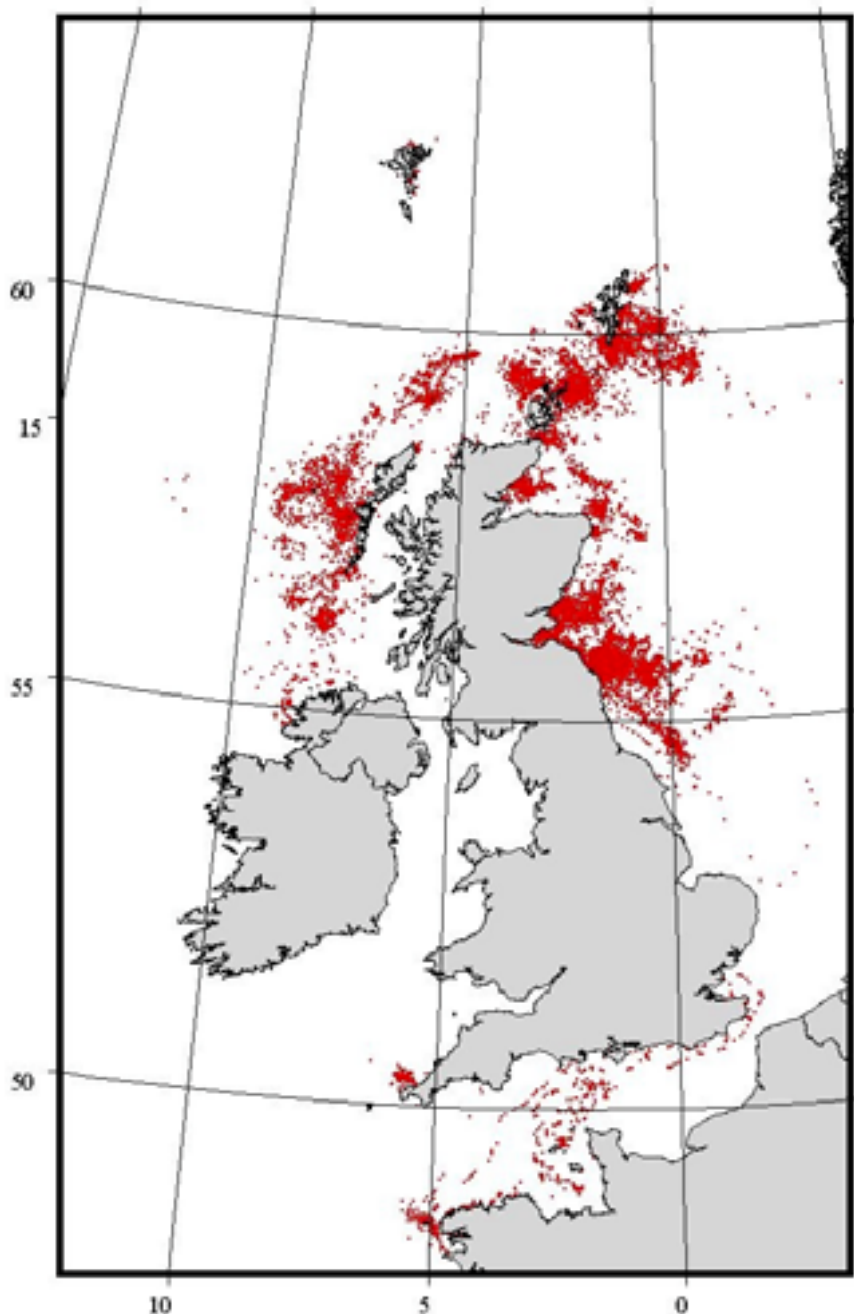


Figure 13. Locations of 108 grey seals fitted with satellite-relay data loggers over a period of about 10 years (see McConnell et al. 1999 for details).

Strategic Environmental Assessment - SEA2

Technical Report 006 - Marine Mammals

As described in more detail in section 2.2.3, extensive information on the distribution of British grey seals at sea is available from studies of animals fitted with satellite-relay data loggers. Figure 12 shows the tracks of 108 grey seals recorded over a period of about 10 years. Figure 13 shows locations at which it has been determined that the seals were foraging (see McConnell *et al.* 1999 for details).

It is clear from Figures 12-13 that grey seals that haul out along the western shores of the North Sea are distributed mainly to the west of 0° longitude. There are tracks in the northern, central and southern SEA-2 blocks but these do not appear to be major areas for grey seals. Further information on the distribution of foraging effort within the overall distribution is given in section 2.2.3.

2. ECOLOGICAL IMPORTANCE

2.1 Harbour seal

The harbour seal is the smaller of the two species of pinniped that breed in Britain. Adults typically weigh about 80-100 kg. Males are slightly bigger than females. As described in section 1, harbour seals are not as abundant as grey seals in the western North Sea (along the coasts of Britain) but they are more so in the eastern North Sea (along the coasts of Denmark, Germany and the Netherlands). This species is an important predator in the North Sea. They have no significant natural predators themselves in this area.

2.1.1 Diet composition

Harbour seal diet in the western North Sea has been studied in the Moray Firth, Shetland and The Wash.

In the Moray Firth, Tollit and Thompson (1996) found the key prey during 1989-1992 to be sand eels, lesser octopus, whiting, flounder, and cod. Significant between-year and seasonal fluctuations were evident. In another study in the same area, Tollit, Greenstreet and Thompson (1997) compared the composition of the diet of harbour seals feeding in the Moray Firth with the abundance of their fish prey estimated from dedicated fishery surveys in 1992 and 1994. Diet composition was almost totally dominated by either pelagic species or species dwelling on or strongly associated with the seabed, depending upon the relative abundance of pelagic schooling prey.

In Shetland, Brown and Pierce (1998) found that gadids accounted for an estimated 53.4% of the annual diet by weight, sandeels 28.5% and pelagic fishes 13.8%. The dominant gadid fishes were whiting and saithe. There were strong seasonal patterns in the contribution of sandeels and gadids, with sandeels being important in spring and early summer, and gadids in winter. Pelagic species (mainly herring, garfish and mackerel) were important in late summer and autumn. Observed seasonal patterns are similar to those recorded for harbour seal diets in the Moray Firth area of Scotland.

In The Wash, Hall *et al.* (1998) found the diet to be dominated by whiting, sole, dragonet and sand goby. Other flatfish (dab, flounder, plaice), other gadoids (bib, cod), bullrout and sandeels were also consumed. A strong seasonality in diet was apparent which can be summarised as: whiting, bib and bullrout dominated from late autumn through early spring; sand goby peaked during winter and early spring; dragonet, sandeels and flatfish (except sole) dominated from late spring to early autumn; and sole peaked in spring.

Strategic Environmental Assessment - SEA2

Technical Report 006 - Marine Mammals

Harbour seal foraging can be summarised as taking a wide variety of prey including sandeels, whitefish, herring and sprat, flatfish, octopus and squid. Diet varies seasonally and from region to region.

2.1.2 Prey consumption

There are no estimates of prey consumption by harbour seals in the North Sea. Because of their smaller size, harbour seals require less food than grey seals, perhaps 3-4 kg per day depending on the prey species. An approximate estimate of the number of harbour seals in the North Sea from the information in section 1 is 60,000. A very approximate estimate of annual consumption of prey by harbour seals in the North Sea is therefore 65,000 - 90,000 tonnes.

2.1.3 Foraging movements and distribution

Direct information on foraging movements and the distribution at sea of harbour seals in the North Sea is limited to studies in the Moray Firth; the results are summarised by Thompson *et al.* (1996). They showed that harbour seals moved only to alternative haul-out sites within a range of 75 km and that all harbour seals foraged within 60 km of their haul-out sites. It is highly unlikely, therefore, that harbour seals forage in the northern SEA-2 block.

Hall *et al.* (1998) proposed that harbour seals from the south-western North Sea that haul out in The Wash forage coastally, based on the dominance of two coastal species, gobies and dragonet, and the lack of sandeels, that are distributed primarily offshore, in the diet (see above). Although it is unlikely that harbour seals in The Wash forage in the southern SEA-2 block, seals that haul out from the Humber south along the coast of East Anglia are likely to forage in this area.

2.2 Grey seal

Grey seals are large marine predators. Adult males may weigh up to 350 kg and grow to over 2.3 m in length. Females are smaller at a maximum of 250 kg in weight and 2 m in length. The species is abundant in the North Sea (see section 1) and is thus an important marine predator in this region. They have no significant natural predators themselves in this area.

2.2.1 Diet composition

The diet of grey seals has been studied extensively in the North Sea. Information is available for seals that haul out around the Humber Estuary, the Farne Islands, the Firths of Forth and Tay, and Orkney.

In the south-western North Sea, Prime and Hammond (1990) found that three species accounted for the majority of the diet: sandeels, cod and sole. Other significant prey were dab, flounder and plaice. There were clear seasonal changes with the diet dominated by flatfish in spring and sandeels in summer. In the central North Sea, diet was dominated by sandeels and cod, with whiting also a significant component (Hammond and Prime 1990; Hall and Walton 1999). In Orkney, sandeels accounted for almost 50% of the diet; the remainder was mostly cod, ling and plaice (Hammond, *et al.* 1994). Overall, a clear picture emerges of grey seal diet comprising primarily sandeels, gadoids and flatfish, in that order of importance, but varying seasonally and from region to region.

Strategic Environmental Assessment - SEA2

Technical Report 006 - Marine Mammals

2.2.2 Prey consumption

The average daily energy requirement of a grey seal has been estimated as 5,500 Kcals. The equivalent weight depends on the oiliness of the prey but equates approximately to 7 kg of cod or 4 kg of sandeels per day. Using this information, the annual consumption of (mainly) fish prey by grey seals in the North Sea in 1992 was estimated as 76,000 tonnes (Hammond and Fedak 1994). Grey seal numbers have increased at around 6% per year since then and an extrapolated estimate of annual consumption in the North Sea for the present is, therefore, approximately 130,000 tonnes. Based on the diet composition information presented above, almost 50% of this total is sandeels.

These current estimates are based on seal diet data collected mainly in 1985 and thus assume that diet composition has not changed since then. However, the sizes of fish stocks in the North Sea are known to have changed markedly during this period and it is likely that grey seal diet composition has also changed. A new study by SMRU, funded by DEFRA, will update grey seal diet information in the North Sea for 2002.

2.2.3 Foraging movements and distribution

As mentioned in section 1, grey seal distribution and movements have been studied in the North Sea using satellite-linked telemetry. In a study of animals captured at the Farne Islands and Abertay Sands, McConnell *et al.* (1999) found that movements were on two geographical scales: (a) long and distant travel (up to 2,100 km away); and (b) local, repeated trips to discrete offshore areas. Long-distance travel included visits to Orkney, Shetland, the Faroes, and far offshore into the Eastern Atlantic and the North Sea. Most of the time, long distance travel was directed to known haul-out sites. The large distances travelled indicate that grey seals that haul out at the Farnes are not ecologically isolated from those at Orkney, Shetland and the Faroes. The grey seals that forage in the North Sea can thus be considered as coming from a single ecological population.

In 88% of trips to sea, individual seals returned to the same haul-out site from which they departed. The durations of these return trips were short (typically 2-3 days) and their destinations at sea were often localised areas characterised by a gravel/sand seabed sediment. This is the preferred burrowing habitat of sandeels, an important component of grey seal diet (see section 2.2.1). This, and the fact that dives in these areas were primarily to the seabed, implies that these were foraging areas. The limited distance from a haul-out site of return trips (about 40 km) indicates that the ecological impact of seal predation may be greater within this coastal zone, rather than further offshore.

This is confirmed by recent work at the SMRU in which a mathematical and statistical modelling framework has been developed that uses satellite-linked telemetry and other data to generate predicted distributions of where grey seals spend their time foraging around the British Isles (Matthiopoulos *et al.* in preparation). Figure 14 shows such a distribution overlaid on the SEA-2 blocks. Although the model predicts that grey seals do spend some time in the SEA-2 blocks, it is a small percentage of total time at sea. The model estimates that grey seals spend only 1.2% of their time in the northern and central SEA-2 blocks and only 0.3% of their time in the southern SEA-2 block.

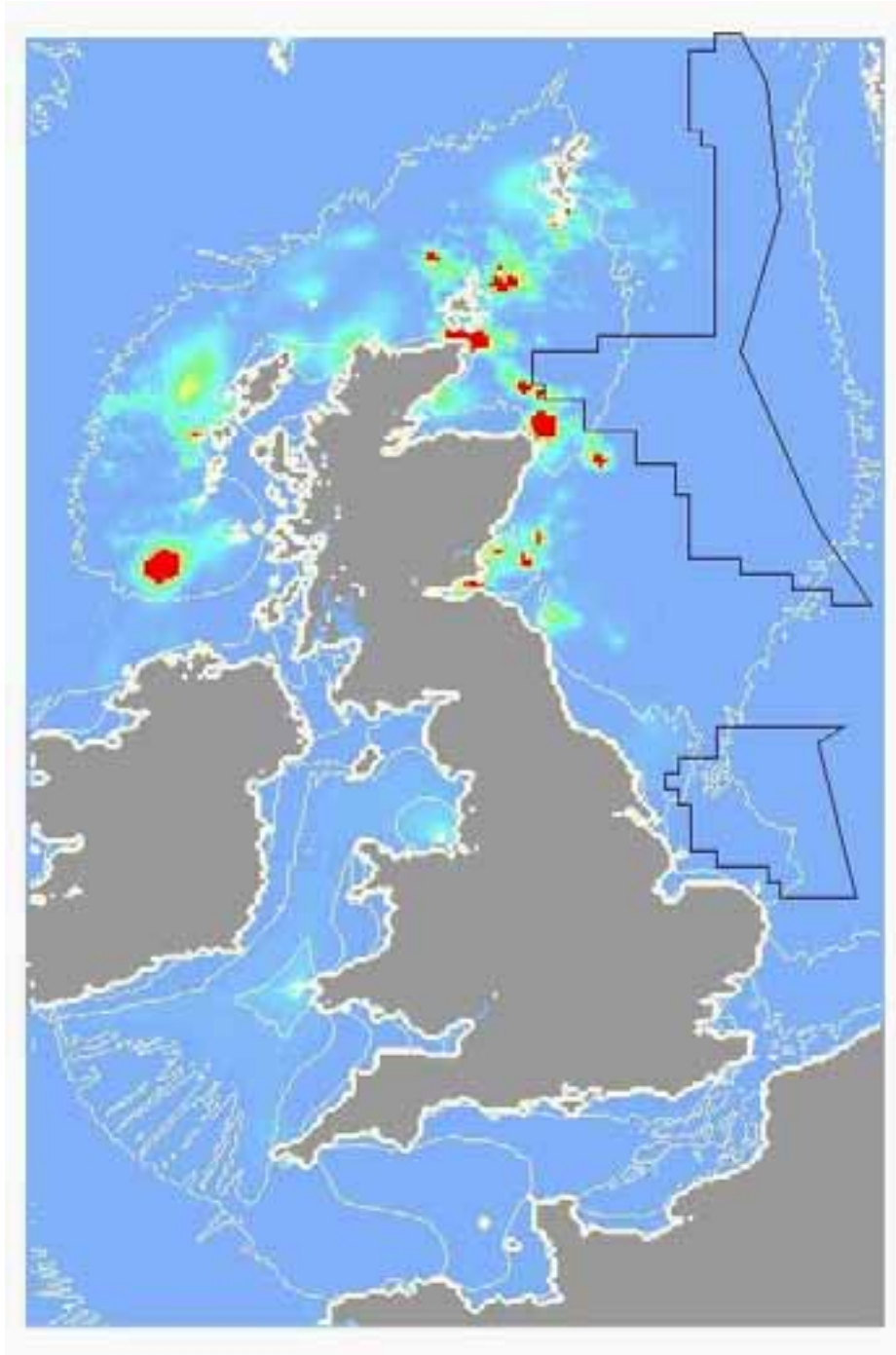


Figure 14. Distribution of where grey seals spend their time foraging around the British Isles predicted by a spatial model using the satellite-linked telemetry data shown in Figures 12 and 13 and other unpublished SMRU data (Matthiopoulos et al. in preparation).

Strategic Environmental Assessment - SEA2

Technical Report 006 - Marine Mammals

Model output is only as good as the input, and the telemetry data for the southern North Sea are few. Additional information for the southern SEA-2 block comes from the grey seal diet study in this area (Prime and Hammond 1990). The diet of animals that haul out to the south of the Humber Estuary (Donna Nook) includes the greater sandeel (*Hyperoplus lanceolatus*), a species with an offshore distribution. Prime and Hammond (1990) also calculated that prey represented at the haul out site could have come from a distance of about 135km away. The inference is that grey seals that haul out at the Humber may spend more time foraging in the southern SEA-2 block than the model currently predicts.

2.3 Cetaceans

The three most abundant species of cetacean in the North Sea are the harbour porpoise, the minke whale and the white-beaked dolphin. White-sided dolphins, killer whales and bottlenose dolphins are also regularly seen. Long-finned pilot whales, sperm whales, common and Risso's dolphins are less frequently sighted, while others species including northern bottlenose whales, Sowerby's beaked whales, fin whales and humpback whales are encountered very infrequently.

2.3.1 Harbour porpoise

Harbour porpoises in the North Sea seem to feed mainly on fish found on or near to the seabed. The main fish species consumed by porpoises (identified in samples recovered mainly from fishing nets) from the Scottish east coast during the 1960s were herring, sprats, whiting, sandeels, cod, Norway pout and other gadoids, while decapod shrimps were also present (Rae 1965, 1973). Between 1989 and 1994, animals sampled from throughout the UK North Sea were found to have been eating mainly small gadoid fish such as whiting, poor cod, Norway pout and pollack, as well as herring, sprats, sandeels and gobies. Greater Argentines were also recovered from at least 6 animals around Shetland (Martin 1995). Samples collected from Scottish waters between 1992 and 1994 yielded mainly small gadoids and sandeels (Santos *et al.* 1994). Between 1998 and 2000, further samples from the North Sea yielded mainly cod, whiting and herring (SMRU/IoZ unpublished data).

Although there have been some inter-decadal shifts in the frequency with which some prey species have been recorded, for most of the North Sea and for most of the past 40 years, the contents of porpoise stomachs have been dominated by much the same range of species, namely small gadoids, clupeids and sandeels. Harbour porpoises are the most numerous marine mammals in the areas under consideration, with a total North Sea population of around a quarter of a million animals (see section 1.3.1). Total fish consumption per annum is likely to run into hundreds of thousands of tonnes for the North Sea as a whole. The significance of this species' predation from an ecological perspective has not been assessed, nor is the importance of the areas under consideration with respect to the entire North Sea.

2.3.2 Minke whale

Minke whales are known to feed on a variety of fish species, including herring, cod and haddock in Norwegian waters. In past decades minke whales were associated with herring in the North Sea and were presumed to feed on them (Northridge 1988). At least one animal in recent years has been recorded feeding on sandeels (Santos *et al.* 1994).

Strategic Environmental Assessment - SEA2

Technical Report 006 - Marine Mammals

2.3.3 White-beaked dolphin

White-beaked dolphins have been reported to eat whiting and other small gadoids, sandeels and octopus in the North Sea (Santos *et al.* 1994), but the sample size for this study was small (3 animals). Previously both herring and whiting have been mentioned as prey items of this species in the North Sea (Harmer 1927, Fraser 1974). Elsewhere in the North Atlantic herring and gadoid fishes also appear to be the main diet items (Reeves *et al.* 1999b).

2.3.4 Atlantic white-sided dolphin

Atlantic white-sided dolphins are more of an Atlantic species than the whitebeaked dolphin, but occur with some regularity in the North Sea, especially in the summer months (Northridge *et al.* 1997), and may therefore be found in the SEA-2 blocks. Herring, mackerel, horse-mackerel, silvery pout and squid have all been recorded as diet items (Reeves *et al.* 1999a), suggesting a pelagic feeding mode.

2.3.5 Killer whale

Killer whales are recorded fairly frequently around Shetland, though they are not numerous in the North Sea in general. The diet in the UK sector of the North Sea is little known, but in Norway, herring is clearly a major diet item. Killer whales are thought to prey upon seals around haul outs in Shetland at least, and possibly offshore, and are also reported to feed on mackerel around Shetland ((Fisher and Brown 2001)).

2.3.6 Bottlenose dolphin

Bottlenose dolphins probably only occur rarely in the offshore areas under consideration. The main centre of distribution in the North Sea is centred on the Moray Firth and southwards along the east coast of Scotland to the Firth of Forth. Stomach contents of a few animals recovered in this area suggest a diet that includes salmon, cod, *Trisopterus* and octopus (Santos *et al.* 1994). It is unlikely that either of these offshore areas is an important feeding area for bottlenose dolphins.

2.3.7 Other species

Long-finned pilot whales again are primarily distributed along the shelf break but are regularly seen around Shetland and also make incursions into the North Sea. The diet has been examined in the Faroe Islands by Desportes and Mouritsen (1993) who also reviewed diet information from other places, and concluded that cephalopods form the bulk of their food.

Risso's dolphins, northern bottlenose whales and sperm whales are also predominantly squid feeders, and do not enter the North Sea very frequently. It is likely that when they do so, they would be following squid. Sowerby's beaked whale is also generally considered to be a squid-eating whale, but one animal stranded in Scotland was found to have been feeding on silvery pout.

Common dolphins are occasional summer visitors to the North Sea. An influx of the squid *Todarodes sagittatus* to the North Sea during 1937 was accompanied by an influx of common dolphins that same year, and it was assumed that the common dolphins were feeding on these squid (Fraser 1946). In the Channel and Biscay area, where common

Strategic Environmental Assessment - SEA2

Technical Report 006 - Marine Mammals

dolphins are more numerous, the main food items are mesopelagic fishes, squids and pelagic crustaceans in the offshore region (Hassani *et al.* 1997), and sardines, horse mackerel and mackerel over continental shelf waters (SMRU/loZ unpublished data). In the North Sea, squids and small pelagic schooling fishes are the likely main food items.

The feeding habits of fin and humpback whales in the North Sea area are unknown, but both species consume fish and planktonic crustaceans elsewhere. The fish species most likely to be consumed are those that form dense pelagic schools such as sandeels, herring, sprats and mackerel.

3. SENSITIVITY TO DISTURBANCE, CONTAMINATION AND DISEASE

3.1 Noise

Marine mammals spend most or all of their lives at sea, and spend the majority of that time submerged. Light is absorbed quickly in salt water and in many marine habitats visibility will be limited to a few metres: thus vision may be of limited use. Sound, however, propagates efficiently through water and marine mammals use sound for a variety of purposes e.g. finding prey, detecting predators, communication often over great ranges and probably navigation.

Many human activities generate sound in the water, e.g. shipping, ice breaking, oil and gas exploration, sonars and explosions, and some of these sounds are extremely intense and many are be detectable at long range. Much anthropogenic noise is in the low to mid frequency ranges that propagate well. Recent technological developments have introduced many new sources of noise in offshore waters. For example, shipping is the dominant noise source at low frequencies in most locations, and this sound source was completely absent before the introduction of mechanised shipping. Ross (1976) estimated that shipping had caused levels of ambient noise to rise by 10dB between 1950 and 1975 and he predicted a rise of another 5dB by the end of the 20th Century. This perturbation of the acoustic environment may have profound implications for marine mammals that evolved to function efficiently in a very different, rather quieter acoustic environment.

3.1.1 Effects of man-made sounds on marine mammals

Any man made noise could potentially have an effect on a marine mammal that is sensitive to it. Effects could range from mild irritation through impairment of foraging or disruption of social interactions to hearing loss and in extreme cases physical injury or even death.

Richardson *et al.* (1995) defined a series of zones of noise influence as the ranges within which certain acoustic effects can be expected. They recognised four zones which will generally occur at increasing sound level (1) the zone of audibility; (2) zone of responsiveness; (3) zone of masking; (4) zone of hearing loss, discomfort or injury.

3.1.1.1 Zone of audibility

This zone is defined by the range at which an animal can just detect the sound. For a sound to be detected it must be both above the absolute hearing threshold for that frequency and be detectable against the background noise level in that frequency band.

Strategic Environmental Assessment - SEA2

Technical Report 006 - Marine Mammals

Both conditioned behavioural responses to sound playback and electrophysiological measurements have been used to measure hearing sensitivities for a number of marine mammal species (see Richardson *et al.* 1995). Such research has been confined to pinnipeds and small odontocetes that can be maintained in captivity. The resulting audiograms are typically U shaped with sensitivities declining rapidly at high and low frequencies. Absolute sensitivity and hearing range varies markedly between marine mammal groups and between individuals.

Information on the hearing sensitivity of those species likely to be encountered in the SEA-2 block is summarised below.

3.1.1.1.1 Hearing sensitivity of pinnipeds

Underwater audiograms have been derived for a range of phocid species and all show a similar pattern over the range of frequencies tested (Richardson *et al.* 1995). The audiograms for harbour seals are typical, indicating a fairly flat frequency response between 0.1 and about 40kHz, with hearing thresholds between 60 and 85 dB re 1 μ Pa. Sensitivity decreases rapidly at higher frequencies, but in the one animal tested at low frequency the threshold at 0.1 kHz was 96 dB re 1 μ Pa, indicating good low frequency hearing (Table 3). No behavioural audiograms are available for grey seals, but electro-physiological audiograms (based on auditory evoked potentials) showed a similar pattern over the range of frequencies tested (Ridgeway and Joyce 1975). The fact that grey seals make low frequency calls suggests that they also have good low frequency hearing (Table 4).

In-air sensitivities have been determined behaviourally for the harbour seal (Table 5). Pinnipeds appear to be considerably less sensitive than humans to airborne sounds below 10 kHz.

Table 3. Hearing sensitivity of the harbour seal from underwater audiograms (Richardson *et al.*, 1995)

Species	Low Freq. (kHz)	Threshold (dB re1 μ Pa)	Best Freq. (kHz)	Threshold (dB re1 μ Pa)	Upper Freq. (kHz)	Threshold (dB re1 μ Pa)
Harbour seal	0.1	96	10-30	60-85	180	130

Table 4. Characteristic frequencies of vocalisations produced by grey seals

Species	Frequency range of vocalisations (kHz)
Grey seal	0.1 – 3

Table 5. Hearing sensitivity of pinnipeds from in-air audiograms (Richardson *et al.*, 1995)

Species	Lower Frequency (kHz)	Threshold (dB re 1 μ Pa)	Upper Frequency (kHz)	Threshold (dB re 1 μ Pa)
Harbour seal	0.1	95	20	85

Strategic Environmental Assessment - SEA2

Technical Report 006 - Marine Mammals

3.1.1.1.2 Hearing sensitivity of baleen whales

There are no published audiograms for baleen whales. It is assumed that they are sensitive to sound of low and medium frequencies because they predominantly emit low frequency sounds, primarily at frequencies below 1 kHz and in many cases predominantly infrasonic sounds. Baleen whales react behaviourally to low frequency calls from conspecifics. However, these observations do not provide accurate indications of hearing thresholds.

Estimates of the frequency range of vocalisations of those species present in the North Sea are shown in Table 6. The high upper frequencies quoted here often represent unusual outliers. Most baleen whale sounds are concentrated at frequencies less than 1 kHz, but sounds up to 8 kHz are not uncommon. The dominant call from fin whales for example is an infrasonic 20Hz pulse and in many oceans their calls dominate the sound field at these frequencies. The anatomy of baleen whale ears also indicates that they are most sensitive to low frequencies.

Table 6. Characteristic frequencies of vocalisations produced by baleen whales (Richardson et al., 1995)

Species	Frequency range of vocalisations (kHz)
Minke whale	0.06 – 20
Humpback whale	0.02 – 8.2
Fin whale	0.01 – 28
Sei whale	0.012 – 3.5

3.1.1.1.3 Hearing sensitivity of toothed whales

Behavioural audiograms have been reported for some odontocete species (Table 7). Toothed whales are most sensitive to sounds above about 10 kHz and below this sensitivity deteriorates. In contrast, high frequency hearing is good; upper limits of sensitive hearing range from about 65 kHz to well above 100 kHz in most species. This is related to the use by these species of high frequency sound pulses for echolocation and moderately high frequency calls for communication.

Within the range of middle frequencies, where odontocetes have their best sensitivity, their hearing is acute. Frequencies at which the species in Table 7 had best sensitivity ranged from about 8 to 90 kHz. Below the frequency range of optimum sensitivity, thresholds increase gradually with decreasing frequency.

Table 7. Hearing sensitivity of toothed whales from underwater audiograms (Richardson et al., 1995)

Species	Lower Frequency (kHz)	Threshold (dB re 1 µPa)	Upper Frequency (kHz)	Threshold (dB re 1 µPa)
Killer whale	0.5	100	120	85
Beluga whale	0.04	140	100	105
Bottlenose dolphin	0.075	130	150	135
Risso's dolphin	2	120	100	120
Harbour porpoise	1	80	150	120

Strategic Environmental Assessment - SEA2

Technical Report 006 - Marine Mammals

For those species occurring in the North Sea for which data on hearing sensitivity are not available, the frequency range of assumed reasonably acute hearing (for species with data on characteristic frequencies of vocalisations) is shown in Table 8.

Table 8. Characteristic frequencies of vocalisations produced by toothed whales

Species	Frequency range of vocalisations (kHz)
Long-finned pilot whale	1 - 18
Sperm whale	0.1 - 30
Northern bottlenose whale	3 - 16
Sowerby's and Cuvier's beaked whale	0.3 - 11
White-beaked dolphin	2 - 20
Common dolphin	2 - 18
Striped dolphin	8 - 12.5

Small odontocetes are more sensitive to high frequencies than are phocid seals. At their best frequencies, odontocetes are around 20-30 dB re 1 μ Pa more sensitive than phocids. However, below about 2 kHz phocids become relatively more sensitive than small odontocetes, eg. At 2kHz harbour porpoises and juvenile bottlenose dolphins had estimated hearing thresholds of 50-70 dB re 1 μ Pa, similar to estimates for a range of phocid seal species. At 100Hz, dolphin hearing thresholds had risen to 130 dB re 1 μ Pa. At 100Hz, harbour seal threshold was estimated to be 95dB re 1 μ Pa, approximately 35dB better than the dolphin. Many of the man-made sounds in the sea are in this low frequency range.

3.1.1.2 Zone of responsiveness

This is defined as the area around a source within which a marine mammal shows an observable response (Richardson *et al.* 1995). Behavioural responses are always difficult to predict. Whereas the physical process of detecting or being damaged by a sound can be predicted from combinations of empirical studies and acoustic models, this is not the case for behavioural reactions to sound. The reactions of an intelligent marine mammal to a particular stimulus may be effected by several factors, e.g. nutritional state (hungry or satiated), behavioural state (foraging, resting, migrating etc.), reproductive state (pregnant, lactating, juvenile, mature), location and previous exposure history.

To date there have been a number of observational studies of changes in patterns of distribution and movement of marine mammals in the presence of acoustic stimuli. For practical reasons, these have usually involved studies of large, easily observed cetacean species. e.g. In their comprehensive review of marine mammals and sound, Richardson *et al.* (1995) devoted 15 pages to the responses of cetaceans to ships and boats and only two pages to the reactions of pinnipeds.

Available information on behavioural and physiological responses of seals and cetaceans, to each of the potential noise sources in the SEA-2 blocks are described below.

3.1.1.3 Zone of masking

To be audible, a sound must be detectable against the background noise. The level of background noise will often determine whether a sound is detectable or not, especially at frequencies where the hearing is highly sensitive. As a rule of thumb, Richardson *et al.*

Strategic Environmental Assessment - SEA2

Technical Report 006 - Marine Mammals

(1995) suggest that a mammal can barely detect a sound signal if its received spectrum level¹ is equal to the level of noise in the 1/3 octave band in which it lies.

Critical ratios, i.e. the ratio of sound level to background level at which detection is masked, have been estimated for a range of species. These have so far involved high frequency or continuous tone sound sources (Southall *et al.* 2000, Richardson *et al.* 1995). For harbour seals, Turnbull and Terhune (1993) showed that increasing repetition rate decreased hearing threshold for pulsed sounds above 2kHz irrespective of the level of masking, i.e. faster repetition decreased the critical ratio. This implies that critical ratios for irregular short pulses will be higher than for continuous tones. To date there are no useful data on the masking effects of background noise on ability to detect low frequency pulsed sounds.

The efficient detection of a wide range of sounds is biologically important for marine mammals. These will include from sounds made by conspecifics, prey and predators, ambient noise useful for orientation and navigation, and for echo-locators the echoes returning from ensonified objects. Masking by noise will decrease the maximum range at which these activities can take place. A useful way to think about the significance of masking for an animal is in terms of the reduced efficiency with which these activities can be performed. Where a directional sound beam is being considered, in the case of echolocation for example, the proportional decrease in effective range will be the most appropriate metric. For other acoustic tasks the decrease in effective area should be considered. Mohl (1981) modelled masking effects in these terms. He found that proportional decrease in efficiency was independent of the S/N ratio necessary for a particular task and that it was inversely related to the amount of background noise already in the environment. Even low levels of anthropogenic noise can significantly decrease the efficiency with which acoustic tasks can be performed, especially in areas that have low levels of "natural" background noise.

Thus, in low noise environments, phocid seals will be able to detect low frequency tone and pulsed sounds at greater ranges than will porpoises or other small cetaceans. However, in high noise environments the differences may be reduced by masking effects. Masking effects have not been studied in large cetaceans. As they tend to produce lower frequency vocalisations we can assume that they will be most affected by low frequency noise.

3.1.1.4 Zones of hearing loss and injury

In terrestrial mammals, exposure to loud sounds can lead to temporary threshold shifts (TTS), permanent threshold shifts (PTS) and non-auditory tissue damage, which may be fatal. For continuous sound sources, the intensity of the signal relative to the hearing threshold at that frequency, and the duration of the exposure can both effect the timing of the onset of TTS and PTS. As a general rule, if a sound can cause a TTS, a prolonged exposure to it will lead to a PTS. For impulsive sounds, the intensity, pulse duration, pulse repetition rate and duration of exposure can all effect the timing and extent of TTS and PTS (Richardson *et al.* 1995). In the case of extremely loud sounds there may be an instant PTS and even damage to non auditory organs.

¹Spectrum level is the level in dB re $1\mu\text{Pa}^2/\text{Hz}$.

Strategic Environmental Assessment - SEA2

Technical Report 006 - Marine Mammals

3.1.1.4.1 Hearing loss

Only recently have experiments to induce threshold shifts been conducted on captive marine mammals. TTSs have been measured directly in a bottlenose dolphin exposed to single 1-second pulses of narrow band sound underwater (Ridgeway *et al.*, 1997). TTS became evident at received levels of 194-201 dB re 1 μ Pa at 3kHz, 193-196 dB at 20 kHz and 192-194 dB at 75kHz. TTS has been induced, experimentally, in three pinniped species, harbour seal, northern elephant seal and Californian sea lions (Kastak & Schusterman, 1996, Kastak *et al.* 1999). All three species showed a similar TTS of 4.6-4.9 dB, after 20-22 minutes of exposure at 65-70 dB above sensation level in the frequency range 0.1-2 kHz.

With the absence of reliable information on the levels of sound likely to cause hearing damage in most marine mammal species, it has been common practice to transfer human Damage Risk Criteria (DRC) to other mammals (Richardson *et al.*, 1995). Humans exposed, in air, to continuous sound levels 80dB above their absolute hearing thresholds are likely to suffer TTS and eventual PTS. If this DRC can be applied to marine mammals we would predict that at low frequencies (<500 Hz) TTS would occur at around 165-180 dB re 1 μ Pa in phocids and at around 180-210 dB re 1 μ Pa in small odontocetes.

These represent the DRC estimates for exposure to continuous noise. For impulsive, intermittent sounds, e.g. airgun blasts, the sound levels may be significantly higher, and will depend on the length and number of pulses received. Richardson *et al.* (1995) estimated the DRC for 100 pulses to be 138 dB above absolute hearing threshold. This would be approximately 208 dB for a harbour seal and would be higher for small odontocetes. Such levels could be encountered directly below or within 100m horizontal distance from a large commercial airgun array.

It must be stressed that the validity of applying DRC estimates from human studies to seals and odontocetes is unproven, though the recent TTS studies mentioned above suggest that this is not an unduly conservative assumption. Given the lack of information on threshold levels for large cetaceans it is not possible to suggest reliable DRCs for this group.

One example of noise induced damage highlights the problem of our lack of knowledge. Mass strandings of Cuvier's beaked whales linked to the use of powerful sonars had suggested that this species, and perhaps beaked whales generally are particularly vulnerable to being damaged by such sound sources (Andre *et al.* 1997). Whales killed in a recent well documented, but so far incompletely reported, stranding in the Bahamas exhibited physical damage to a variety of structures associated with hearing and/or adjacent to air spaces (Balcomb and Claridge, 2001). It now seems likely that military sonar has been causing beaked whales to strand regularly since the sixties. This phenomenon is a cause for more general concern for several reasons:

1. Our knowledge of the anatomy and vocal behaviour of beaked whales provide no indications to their apparent vulnerability to noise;
2. Other species may be equally vulnerable, and this group may be vulnerable to other intense noise sources;
3. Although, with hindsight, mass strandings appear to be linked in time and space with sonar deployments, it has taken 40 years for the association to be accepted.

Strategic Environmental Assessment - SEA2

Technical Report 006 - Marine Mammals

3.1.1.4.2 Non-auditory effects

Blast injury

Very intense pressure waves, e.g. blast waves from explosions, have the potential to cause damage to body tissues. Damage is most likely to occur where substantial impedance differences occur, e.g. across air/tissue interfaces in the middle ear, sinuses, lungs and intestines.

Blast damage in marine mammals has been investigated using both submerged terrestrial mammals (Goertner, 1982; Richmond, Yelverton *et al.*, 1973; Yelverton, Richmond *et al.*, 1973) and dolphin cadavers (Myrick, Cassano *et al.* 1990). Goertner (1982) estimated distance at which slight lung and intestinal injuries would occur in various marine mammals. Marine mammals are at greatest risk of injury when they are at the same depth as, or slightly above, the explosion. Risks drop off quite sharply above and below this depth. E.g. a harbour porpoise within 750m of an explosion of a 545kg charge at 38m is likely to suffer injury if it is at the same depth. But 30m above, or 43m below it, only animals within 500m are likely to be injured. "Safe" distances for larger animals will be substantially less (Richardson *et al.* 1995). Young (1991) estimated safe ranges for marine mammals of three different sizes and for human divers. However, the "safe" distances for humans are substantially larger than those for an equivalent sized marine mammal. Richardson *et al.* (1995) have suggested that a precautionary approach would be to use the human value for all marine mammals. This would give a safe distance of 600m for a 1kg explosion, 900m for a 10kg explosion and 2km for a 100kg explosion.

Small explosive charges have been used to try to keep seals and small whales away from fishing gear, but with limited success. Humpback whales did not apparently move away from a construction site off the coast of Newfoundland where very large charges (200-2,000 kg) were used in construction work (Lien *et al.*, 1993). However, two whales with severely damaged ears were washed up dead during this work, and it seems very likely that the explosions were at least partly responsible for their deaths (Ketten *et al.*, 1993). Five of eleven Weddell seals sampled in the vicinity of blasting sites showed signs of inner ear damage (Bohne *et al.* 1985,1986) and various otariid seals have been observed to be killed directly by explosives (Fitch & Young 1948, Trasky 1976). It would seem that although the behaviour of marine mammals is not much affected by explosions, and they don't seem to move out of areas where they occur, they are none-the-less damaged by them.

It isn't clear whether intense sound sources, such as seismic airguns or military sonar, could cause tissue damage. If so, this would be at very short range and small numbers of animals would be affected so severely.

Resonance effects

Air filled cavities within the body may be made to vibrate by intense, continuous wave underwater sound. Effects will be most marked at frequencies close to their resonant frequencies, which may vary with dive depth.

Strategic Environmental Assessment - SEA2

Technical Report 006 - Marine Mammals

Human divers exposed to intense low frequency sound report feelings of vibration, discomfort and disorientation which may be linked with over stimulation of the vestibular system. It is likely that some of the effects reported by divers also occur in marine mammals. If so, they are likely to be evinced as behavioural disruption and disorientation.

Intense sound fields may also cause gas bubbles to develop around micronuclei within tissues. This could be a major concern for human divers whose body tissues become super-saturated from breathing compressed gasses during dives. Marine mammals do not breath compressed air, but the repetitive nature of their diving may lead to super-saturation (Ridgway and Howard, 1982). Crum and Mao (1996) modelled the process of bubble growth in sound fields and concluded that a few minutes of exposure to 190 dB re 1 μ Pa in the frequency range of 250-1000 Hz, could induce bubble formation which might lead to occlusion of capillaries. Thus, exposure to intense sound could be the critical factor triggering the bends in human divers or marine mammals with super-saturated tissues.

3.1.2 Responses of marine mammals to different types of noise

Offshore oil and gas exploration and production is noisy. Each stage process produces loud and potentially disturbing and or even damaging sounds.

- **Exploration** (Seismic Survey-sidescan sonar),
- **Extraction** (Drilling, dynamically positioned vessels, sonar surveys, seismic site surveys, increased boat traffic, pipeline laying)
- **Decommissioning** (Explosive removals)

We very briefly describe some of the known and potential effects of noise and how these relate to various stages in the life of offshore oil and gas fields. We then try to identify the key knowledge gaps and prioritise the research needed to close them.

3.1.2.1 Seismic surveys

Exploration for oil and gas reserves usually requires a series of seismic surveys to characterise the sub-surface rock formations. This involves generating a series of high energy acoustic pulses in the water column. Sound pressure waves penetrate the sea bed to produce seismic waves. By measuring the strength and time of arrival of reflected signals geophysicists can map the patterns of the reflective boundaries between different rock strata.

Airgun arrays are the commonest high energy source; by 1985 more than 97% of marine seismic surveys used airguns (Turnpenny & Nedwell, 1994). Airguns produce sound pulses by rapidly venting high pressure gas from a chamber. The resulting oscillating bubble produces a series of pressure waves with a waveform that can be described as a damped cosine, with a reduced amplitude and slight delay in the initial peak (Malme *et al.* 1986, Turnpenny & Nedwell, 1994; Barger & Hamblen, 1980). Airgun arrays are towed behind purpose built survey vessels. Guns are suspended at depths of 1 to 10 m and fired at intervals of a few seconds, depending upon the speed of the survey vessel and the depth of the water. In general the boats travel at 4-5 knots (2-2.5 m.s⁻¹) and guns are fired at roughly 10 s intervals. The length of any firing sequence is dictated by the individual survey requirements, but it is not unusual for firing sequences to continue for many hours.

With the exception of explosives, airgun arrays are the highest energy man made sound sources in the sea. The peak levels of sound pulses are much greater than the RMS levels from continuous sources such as ship noise or other industrial sources (Richardson *et*

Strategic Environmental Assessment - SEA2

Technical Report 006 - Marine Mammals

*al.*1995). However, because the sound pulses are short relative to the inter-pulse intervals, the total energy transmitted to the water may be lower than from some continuous sources. Direct comparisons between different types of sources are therefore difficult to interpret. Their ability to cause hearing damage will of course depend on the characteristics of the receiver (marine mammal ears) which in many cases are poorly known. Broadband source levels of 248-259 dB re 1 μ Pa@1m are typical of large arrays (Richardson *et al.* 1995).

Airgun arrays are designed so that signals from individual guns interact to maximise the downward transmission of the acoustic energy. Pressure fronts from different points in the array, which constructively interfere in the vertical plane, are unlikely to do so in the horizontal plane. So, effective source levels for horizontal transmission will generally be lower than for vertical transmission and will depend critically on the geometry of the array and the position of the receiver relative to it. A linear array of guns will generally have a much lower effective source level along its axis than to the side.

While these horizontal transmissions are lower than the directed vertical levels, they are very loud in absolute terms and relative to background levels. Estimated source levels for a 28.7 litre array at 'end-fire' aspect were 217dB re 1 μ Pa@1m, and would be expected to be greater at the sides (Malme *et al.* 1983). Thus, significant amounts of acoustic energy may be transmitted horizontally through the water column (Richardson *et al.* 1995). Goold and Fish (1998) detected sound levels above background, at ranges up to 8km from a 37 litre array and detection ranges of 100s of miles are not uncommon.

Most of the energy in airgun blasts is below 200 Hz. Barger & Hamblen (1980) reported a bandwidth of 40Hz centred about 120 Hz. The peak spectral level (the SPL in 1Hz steps) occurred between 35 and 50 Hz, and decreased monotonically with increasing frequency; spectral level at 200Hz was 48dB down on the peak at 40Hz.

Source levels at higher frequencies are low relative to that at the peak frequency but are still loud in absolute terms and relative to background levels. Goold and Fish (1998) recorded 8 kHz sounds above background levels at a range of 8km from the source, even in a high noise environment.

The reaction of some baleen whales (bowhead, grey and humpback) to airgun noise has been studied in the field. Clear behavioural responses, in terms of changes in surfacing patterns and movement away from the source when it was within 5 km of the whales, have been observed on a number of occasions (Malme *et al.* 1983, 1984, 1988, Richardson *et al.* 1995). Reactions have been most pronounced when the whales were to the side of the arrays long axis. McCauley *et al.* (1998) showed predictable avoidance of airguns by humpback whales during a series of careful observations made in Australia. They found that mothers and calves were more vulnerable to disturbance than single animals. Fin and blue whales continued to call in presence of airgun noise (McDonald *et al.* 1993). But McDonald showed apparent avoidance by fin or blue whale. In UK waters, minke whales were sighted significantly further away from seismic vessels during periods of seismic array activity, suggesting active avoidance (Stone 1997, 1998).

The hearing ability of toothed whales is relatively poor at low frequencies; nevertheless there is sufficient high frequency energy in the output of airgun to make them audible at distances of >10km. Goold (1996) presented evidence which he interpreted as showing large scale, long term changes in abundance and distribution of common dolphins during a survey and shorter term changes in behaviour between periods when guns were on and off within a survey block. In a later paper (Goold, 1998), seasonal changes in the distribution of dolphins in the same area at the same time were revealed that may explain some, or all, of

Strategic Environmental Assessment - SEA2

Technical Report 006 - Marine Mammals

the larger scale changes previously attributed to seismic surveys. If nothing else, this shows the difficulty of interpreting correlational studies made from platforms of opportunity.

Stone (1997, 1998) summarised reports from seismic vessels operating around the British Isles in which white-beaked and white-sided dolphins were seen less often during periods of seismic array activity. Conversely, more pilot whales were seen during periods of activity. This may indicate different avoidance strategies for deep diving animals like pilot whales. Sperm whales have been reported to stop calling and/or move away from distant airgun noise (Mate *et al.* 1994, Bowles *et al.* 1994).

Both harbour and grey seals showed short term avoidance behaviour during controlled exposure experiments with small airguns (Thompson *et al.* 1998). In both cases seals abandoned foraging sites and swam away from airguns but returned to forage in the same areas on subsequent days.

Smaller scale "site surveys" will be made throughout the life of an oil field. Generally these are on a smaller scale, and use less powerful, higher frequency airgun arrays.

3.1.2.2 Vessel noise

The increased shipping associated with developments in the SEA-2 blocks will be mainly smaller ships such as support vessels and tugs. Noise from shipping is roughly related to vessel size, larger ships have larger, slower rotating propellers which produce louder, lower frequency sounds. Broadband source levels of ships between 55 and 85m are around 170-180 dB re 1 μ Pa@1m (Richardson *et al.*, 1995), with most energy below 1 kHz. Use of bow thrusters increases broad band sound levels, in one case by 11 dB and includes higher frequency tonal components up to 1 kHz (Richardson *et al.* 1995).

Richardson *et al.* (1995) reviewed the published literature on the response of marine mammals to vessel noise. Many toothed whales appear to be tolerant of vessel noise and are regularly observed in areas where there is heavy traffic. Sperm whales have been reported to react to vessels with powerful outboard engines at distances of up to 2 km. Humpback whales and right whales are also reported to avoid large vessels in some areas. Fin whales are reputed to ignore large vessels, but they respond to close (< 100 m) approaches by whale-watching vessels by spending less time at the surface and by making shorter dives. In general, whales show very little response to slow approaches by vessels, but they may swim rapidly away from vessels producing sound which changes in intensity or head directly towards them. There is little or no data on the response of seals to vessel noise out at sea. The fact that so many large whales are struck and killed by shipping, indeed this may be a major factor preventing the recovery of North Atlantic right whale populations, is testament to the fact that these animals don't always detect and respond appropriately to shipping. Increased shipping associated with offshore activities will increase the risk of ship-strike mortality for larger cetaceans.

3.1.2.3 Drilling noise

Drilling noise is generally low frequency, with highest levels being recorded from drill ships. Conventional drill platforms produce very low frequency noise, with strongest signals at around 5 Hz whereas drill ships produce noise with tonal elements up to 600 Hz (Richardson *et al.* 1995, Greene 1987).

Strategic Environmental Assessment - SEA2

Technical Report 006 - Marine Mammals

There is little data on the reactions of marine mammals to drilling noise. Studies of grey and bowhead whales during migration suggest that they are generally tolerant of low level drilling noise from drill ships, but show some avoidance behaviour when sounds are loud (>20 dB above background) (Richardson *et al.* 1985, 1990, Wartzok *et al.* 1989). Bowhead whales apparently reacted more to play backs than to real operational sounds. Migrating Grey whales have been shown to change course to avoid drilling noise (Malme *et al.* 1983, 1984).

There is no clear evidence of avoidance behaviour by small odontocetes to drilling noise. Bottlenose, Risso's and common dolphins were seen close to oil platforms in the North West Atlantic, and sightings rates were similar in areas with and without rigs (Sorensen *et al.* 1984).

There is no evidence that phocid seals avoid drilling platforms. Both bearded and ringed seals approached a simulated drilling sound source, coming within 50m of the source (Richardson *et al.* 1995, Greene 1987).

Construction activities associated with establishing new platforms and pipelines will also generate noise. The loudest sounds are likely to result from pile driving. Pile driving source levels can be high, levels of 131-135 dB re 1 μ Pa. were measured 1km from a hammer used for pipe installation (Richardson *et al.* 1995). Such impulsive sounds have similar frequency components to those generated by airguns. There are no available data on effects of pile driving noise on marine mammals.

3.1.2.4 Decommissioning

In the latter stages of an oilfield's life, decommissioning of fixed structures, e.g. large numbers of redundant well heads, becomes a frequent requirement. Decommissioning may involve some increase in shipping noise, in particular when noisy, dynamically positioned diving support vessels are used. The use of explosives for underwater cutting and demolition poses a serious risk of inducing PTS, or tissue damage, and is probably the greatest potential cause of acute mortality for marine mammals related to oil and gas exploration and production activities.

Ranges at which animals may suffer damage can be estimated using the models described above.

For cetaceans, risk of damage can be reduced by blasting only when observations indicate that there are no cetaceans within the danger area. However, probabilities of seeing cetaceans, especially small ones such as porpoises, may be low even in good weather. Decommissioning often takes place in the winter, when sightings conditions are poor, and blasting may occur at short notice during the night or day. In sub-optimal sightings conditions such precautions will be ineffective. Passive acoustic monitoring used in addition to visual observation can very significantly increase detection probabilities for most cetaceans during some activities, such as seismic surveys (Gordon *et al.*, 2000). Acoustic monitoring is compromised by the high noise levels produced by DP vessels however (J. Gordon pers comm.).

Such observational methods are even less appropriate for seals. Even in good sightings conditions seals are rarely seen at the surface. This problem is exacerbated by the fact that seals and possibly small cetaceans may be attracted to offshore structures, probably because they cause fish to aggregate and are good foraging locations.

Strategic Environmental Assessment - SEA2

Technical Report 006 - Marine Mammals

Current demolition practices probably kill and injure seals regularly and no effective mitigation practices have been developed.

3.1.3 Research Requirements

It is clear from earlier sections that current understanding of the effects of noise on marine mammals and the risks that this may cause is in most cases rudimentary. In most scenarios the main uncertainty is in the form of the relationship between observable responses and population consequences. However, there are legitimate grounds for concern. Appropriate application of the precautionary principle will be required. From an industry perspective, applying the precautionary principle in a situation with great uncertainty results in a restrictive management regime. Reducing uncertainty with focused research should allow the development of management schemes which achieve conservation objectives while producing controls within which industry can operate. Without pre-judging the outcome of individual risk analyses we can identify broad areas of research, which are feasible and likely to be valuable.

- **Dose Response.** Research, often in the form of controlled exposure experiments, to address key uncertainties about marine mammal acoustics, sensitivities and effects of sound
 - Start by doing these in locations where conditions are optimal (good weather, adequate populations, long term studies, good logistics).
 - Assessment of accumulated impacts on populations that range widely and may migrate to other areas.
- **Exposure Risk.** Targeted surveys together with telemetry based studies of movements and behaviour of selected species should be linked with oceanography and monitoring of other components of the ecosystem to identify important habitats, explore why they are important and improve our ability to predict marine mammal distributions at sea, year round.
- Assessing **medium** or **long-term consequences** of particular activities will require long term monitoring of status and distribution of populations of interest. To be useful this must be in place before new activities develop i.e. managers must be pro-active in establishing monitoring. There are currently no monitoring schemes for any offshore cetacean populations in UK waters that would be capable of detecting even large changes in population levels. Achieving this cost effectively will require the development of new methods, passive acoustic techniques are one promising possibility. Even with such programs, establishing direct cause and effect will be difficult and necessarily retrospective.
- **Development of effective mitigation.** Current mitigation practices is largely based on “common sense” measures and little work has been done to establish whether they work and/or could be made more effective. It will always be prudent to utilise effective mitigation measures, if they are easy to apply, even when harmful effects of noise have not been proven.

This will require a substantial research program. Partnerships with other noise producers (e.g. shipping, military) should be established. It may appear a daunting scientific task, but in reality it is trivial compared to the engineering challenges that the oil industry faces and overcomes every day.

3.2 Contaminants

3.2.1 Background

Marine mammals are exposed to a variety of anthropogenic contaminants. The main route for exposure is through the food chain and as these mammals are top predators they are at particular risk from contaminants which biomagnify through the food chain (i.e. are found at increasing concentrations at higher trophic levels). Most research has focussed on two main groups of contaminants: the persistent organic pollutants (POPs) and the heavy metals. However, there is some information on other contaminants including the polycyclic aromatic hydrocarbons (PAHs) and the butyl tins.

3.2.1.1 Persistent organic pollutants

This group of chemicals includes the organohalogenated compounds (such as the polychlorinated biphenyls - PCBs), the dichlorodiphenyltrichloroethanes (DDTs), polybrominated biphenyls (PBBs), polybrominated diphenyl ethers (PBDEs), chlordane, toxaphene, the cyclodienes (such as aldrin and dieldrin), and polychlorinated terphenyls (PCTs). Of these the occurrence and potential effects of the organochlorine compounds (OCs) are by far the best investigated. Many chlorinated pesticides are also included in this group. The significance of these compounds for marine mammals is that:

- they are highly lipophilic and hydrophobic.
- they are differentially accumulated in the lipids of animals and are therefore sometimes found at high concentrations in marine mammal blubber.
- they are chemically very stable and persistent, many compounds being resistant to metabolic degradation.
- they are present as many different isomers and congeners, and comprise hundreds of different chemical formulations which may have different behaviours and toxicities.
- they have reproductive and immunosuppressive effects, and many are 'endocrine disrupters' - acting as hormone agonists or antagonists.

In marine mammals most of these compounds are sequestered into the blubber so much of the determination of POP residues has concentrated on this tissue. Between 90 and 95% of the total burden of many POPs, particularly PCBs and DDTs, are found in the blubber because of its high lipid content (Aguilar 1985). The compounds are essentially bound away in this tissue until the tissue is mobilised for energy requirements or for the production of milk. This aspect of the life cycle of marine mammals means they may be re-exposed to the contaminants when they call upon their blubber reserves during periods of natural fasting. This is particularly the case for animals that do not feed during the breeding season, and means that females can offload a large proportion of their contaminant burdens to their offspring (Ridgway and Reddy 1995). Other POPs may behave slightly differently, and recent studies have shown PBDEs to be at high concentrations in the adrenal glands as well as the fat stores (Klasson Wehler *et al.* 2001). These compounds, particularly the tetra and penta group, are now found in the blubber of seals and cetaceans from UK waters and in a study on juvenile grey seals are associated with thyroid hormone disruption (Hall *et al.* 2001).

Many factors can affect the occurrence and distribution of POPs in marine mammals. These include diet, foraging strategy, age, species, sex, and nutritional condition. These

Strategic Environmental Assessment - SEA2

Technical Report 006 - Marine Mammals

confounding variables need to be considered when interpreting the significance of reported tissue concentrations (Aguilar *et al.* 1999).

3.2.1.2 Heavy metals

The heavy metals are a heterogeneous group of compounds. Some are bioaccumulative (such as mercury) whereas others appear not to be (such as cadmium, chromium, nickel and copper). Data on zinc and lead in various species in the marine food web are equivocal (Muir *et al.* 1992). The liver, kidney and bone are the main target organs for heavy metals and levels can vary widely depending on the geographical location of the species. Marine mammals appear to be protected against the effect of many heavy metals because of the presence of metallothioneins (Bowles, 1999). These are proteins whose production is induced by the occurrence of divalent cations such as Hg^{++} , Cd^{++} , Cu^{++} and Zn^{++} . These proteins have a high affinity for binding such cations which sequester the metals to form biochemical complexities with reduced toxicities. High levels of liver cadmium have been reported in a number of cetacean species and this probably reflects dietary preferences. High concentrations of cadmium are accumulated in the liver and gonads of cephalopods (Hamanaka *et al.*, 1982) and Antarctic krill (Honda *et al.* 1987), the prey species of many cetaceans.

3.2.1.3 Polyaromatic hydrocarbons (PAHs)

The potential for biomagnification of PAHs is low, because fish (the main food of marine mammals) are good metabolisers of PAHs compared with molluscs. Bioaccumulation of these compounds will be lower in fish-eating marine mammals than those that feed on cephalopods or small crustaceans and plankton. Seals and cetaceans also have a detoxification enzyme system in the liver which is induced in response to various xenobiotic compounds, including PAHs. This system (known as the mixed function oxidase, MFO or cytochrome P450 system) can convert parent compounds to excretable metabolites largely by the addition of a hydroxyl group (Sipes and Gandolfi, 1991). This biotransformation of compounds may, however, be toxic if the metabolites produced are bioactive. In addition the rate at which transformation occurs is critical. If the non-toxic pathway is saturated minor pathways which produce further toxic intermediates become involved. One isoform of the cytochrome P450 enzyme system is also called aryl hydrocarbon hydroxylase because it plays a role in the metabolism of PAHs. The regulation of certain cytochrome P450 enzymes involves a ligand-activated transcription factor known as the Ah (aromatic hydrocarbon) receptor (Timbrell, 1991). This has been investigated in a very limited number of marine mammals but induction and activity of the cytochrome enzymes is widely used as a marker of exposure to inducers such as PAHs and PCBs (Troisi and Mason 1997, Mattson *et al.* 1998, Wolkers *et al.* 1999).

3.2.1.4 Butyl Tins (Tributyl tin (TBT), Dibutyl tin (DBT) and Monobutyl tin (MBT))

These groups of compounds have only quite recently been identified in marine mammals, despite knowledge about their toxicity and endocrine disrupting effect in invertebrates and fish having been available for a number of years (Iwata *et al.* 1994). Results of analysis in liver samples from stranded animals have indicated a widespread contamination around the coasts of England and Wales; indeed TBT and DBT have been found in open ocean cetacean species which indicates a wider contamination of the sea by these compounds (Law *et al.* 1999).

Strategic Environmental Assessment - SEA2

Technical Report 006 - Marine Mammals

3.2.2 Sources of Data

There is a huge body of literature on contaminants in marine mammals world-wide. For example, the US Marine Mammal Commission (Long, 2000) recently issued a bibliography containing over 1,200 references. In addition, there are many good reviews on the levels of contaminants found, the patterns of different compound groups in various species and the temporal changes in concentrations. The most comprehensive are: Aguilar and Borrell (1997), Geraci and St. Aubin (1990), Hall (In Press), Law (1996), O'Shea (1999), Reijnders, Aguilar and Donovan (1999).

3.2.3 Knowledge

Our knowledge of the effects of contaminants on marine mammals remains limited. This is largely due to the difficulties involved in investigating the responses in wild animals. Whilst it is relatively easy to determine the tissue concentrations of various compounds in dead and live-captured animals, the significance of these concentrations for the health and ultimate survival of the individuals remains difficult to assess. A few studies have investigated the responses to exposure on animals in captivity, comparing responses in exposed and control groups and some associations between dysfunction and contaminant exposure have been reported in free-living individuals and populations.

3.2.3.1 Persistent organic pollutants

Two observations on wild populations suggested that the uptake of POPs by marine mammals could have toxic effects similar to those reported in laboratory species. The first was the report that a serious decline in the population of harbour seals in the Wadden Sea might be due to the reproductive effects of contaminant exposure (Reijnders 1980; Reijnders 1984). Reijnders (1986) addressed this more directly in an experiment using captive harbour seals. Two groups of female harbour seals were fed fish from different areas one contaminated with OCs the other much cleaner. Reproductive success was significantly lower in the group fed contaminated fish and failure was thought to occur at the implantation stage of pregnancy. The second effect was investigated following the outbreak of phocine distemper among harbour and some grey seals in European waters, in which differential mortality rates were reported among harbour seal populations around the UK coast (Hall *et al.* 1992a). This observation led to a study of the OC contaminant burdens among animals that were victims and survivors of the epidemic. The results suggested that animals that died of the disease had higher blubber levels of OCs than survivors, although it was not possible to control for all potential confounders (Hall *et al.* 1992b). Interestingly this finding was also repeated in a study of contaminant burdens in striped dolphins following a similar outbreak of dolphin morbillivirus in the Mediterranean Sea in 1990 (Aguilar and Borrell 1994). Later studies by Ross *et al.* (1995) and DeSwart *et al.* (1994) found evidence for immunosuppression in a group of captive harbour seals fed contaminated fish compared with animals fed clean fish. Natural killer cell activity (white blood cells that are particularly required in the defence against viral infection) in particular was depressed and lymphocyte function measured *in vitro* was lower in the exposed group.

Bergman and Olsson (1985) also reported the occurrence of adrenocortical hyperplasia, hyperkeratosis and other lesions in grey (*Halichoerus grypus*) and ringed (*Phoca hispida*)

Strategic Environmental Assessment - SEA2

Technical Report 006 - Marine Mammals

seals from the Baltic. The pathologies seen were indicative of a disease complex involving OCs and hormone disruption, a finding also demonstrated in laboratory animals (Fuller and Hobson, 1986). Other abnormalities associated with high exposure to PCBs include skull and bone lesions in grey seals (Bergman *et al.* 1992); (Zakharov and Yablokov 1990) and harbour seals from the Baltic (Mortensen *et al.* 1992).

More recently a study by Jepson *et al.* (1999) indicated that harbour porpoises (*Phocoena phocoena*) stranded along the coast of England and Wales which had died of infectious diseases had significantly higher concentrations of PCBs in their blubber than those which died from trauma, such as by-catch in fisheries or ship strikes.

3.2.3.2 Heavy metals

Of the toxic elements studied those of most importance are cadmium, lead and mercury.

Cadmium can sometimes be found at high concentrations in the livers of marine mammals (Law *et al.* 1991), but there does not appear to be any published information on cadmium-induced pathology in marine mammals. These high levels are probably due to naturally high cadmium concentrations in prey species such as squid (Bustamante *et al.* 1998). Metallothionein sequestration appears to protect marine mammals from cadmium toxicity.

Lead is also found in many marine mammal tissues, particularly liver and kidney, but not at concentrations that are cause for concern (Law *et al.* 1991). Bone is a long-term storage target organ for lead, although again no associated histopathological lesions have been reported. Smith *et al.* (1990) used isotopic ratios to show that the source of lead in some marine mammal species has shifted from naturally derived lead to anthropogenic aerosol-dominated forms.

Mercury can bioaccumulate through the food chain and is a well-recognised neurotoxin. Its interaction with selenium appears to be protective and various laboratory studies have shown that toxic effects of mercury were prevented or reduced by simultaneous exposure to selenium (Cuvin-Aralar and Furness, 1991). Some of the concentrations of mercury in the liver of marine mammals have exceeded those known to be toxic to other mammals but lethal effects have not been observed (Britt and Howard, 1983). Marine mammals seem able to metabolise mercury from its toxic methyl form found in fish. Although marine mammals can tolerate high concentrations of mercury immobilised as the selenide, methylmercury poisoning has been reported in a ringed seal in an area of heavy industrialisation (Helminen *et al.* 1968).

Copper is an essential dietary element for mammals and a wide range of concentrations has been reported in marine mammals. In the UK levels of between 3 and 30 mg/kg have been measured in the liver of stranded animals and it has been suggested that this may represent the normal range of homeostatic control in marine mammals (Law, 1996).

3.2.3.3 Polyaromatic hydrocarbons (PAHs)

Polyaromatic hydrocarbons have rarely been studied in the tissues of marine mammals but where measurements in muscle tissue, liver and blubber have all generally been below 1µg/g. Law and Whinnett (1992) investigated PAHs in the muscle tissue of harbour porpoises stranded around the UK coast and found total PAH concentrations ranging from 0.11-0.56 µg/g wet weight and 0.47-2.4 µg/g wet weight Ekofisk crude oil equivalents. Specific PAHs were 2-4 ring compounds (naphthalenes, phenanthrenes, anthracene, fluoranthene and pyrene). Bond (1993) found similar compounds in the blubber of seals from the Moray Firth. The PAH levels in this species displayed large variations, with grey

Strategic Environmental Assessment - SEA2

Technical Report 006 - Marine Mammals

seals having higher levels than harbour seals (mean 15.78 (SD 25.54) $\mu\text{g/g}$ dry weight in grey seals 2.67 (SD 5.77) in harbour seals).

The effects of PAHs on marine mammals are reviewed in Geraci and St Aubin (1990) and various responses from effects on the central nervous system, eyes and mucous membranes, thermal regulatory effects from fouling of fur, to induction of metabolic enzyme systems and effects on hormone levels were reported. These effects are largely observed following short term acute exposure. Less is known about the effects of long term chronic exposure. Although studies have shown that fish readily convert aromatic hydrocarbons to metabolites such as dihydrodiols and phenols (Krahn *et al.* 1984) and therefore fish-eating mammals may receive lower doses of parent PAHs, cetaceans which feed lower down the food chain are likely to be most at risk. The carcinogenic nature of certain PAHs, such as benzo(a)pyrene has been a concern for example (Beland *et al.* 1993, 1988) reported the detection of benzo(a)pyrene adducts in DNA from Beluga whales in the Gulf of St Lawrence, but there is little evidence for the substantial exposure of marine mammals in UK waters to this compound. One of 27 UK harbour porpoises examined by (Law and Whinnett 1992) between 1988 and 1991 was considered to have died as a result of a tumour.

Butyl tin compounds, largely tri- and di-butyl tin, have now been reported in the liver and blubber of pelagic cetaceans and marine mammals in UK waters (Law *et al.* 1999), but no reports on their effects have been published.

3.2.3.4 Oil spills

Direct mortality from contaminant exposure has rarely been reported, and has usually been associated with major oil spills such as the *Exxon Valdez* in Alaska in 1989. High concentrations of phenanthrene (PHN) and naphthalene (NPH) were reported in the bile of oiled harbour seals (*Phoca vitulina*) collected following the spill (up to 23 times higher than in control seals) and high concentrations of PAHs in the blubber (up to 400 ppb) (Frost and Lowry 1993). Due to the condition of many of the carcasses examined it was difficult to attribute cause of death to oil toxicity, but many animals exposed to oil did develop pathological conditions including brain lesions. Additional pup mortality was also reported in areas of heavy oil contamination compared to unoiled areas.

More generally, marine mammals rely on their blubber for insulation and are thus less vulnerable than seabirds to fouling by oil (Geraci and St Aubin, 1990). However, they are at risk from hydrocarbons and other chemicals that may evaporate from the surface of an oil slick at sea within the first few days. Seals often barely raise their nostrils above the surface of the water when they breathe, so any seal surfacing in a fresh slick is likely to inhale vapours. Cetaceans also typically inhale close to the surface. Symptoms from acute exposure to volatile hydrocarbons include irritation to the eyes and lungs, lethargy, poor co-ordination and difficulty with breathing. Individuals may then drown as a result of these symptoms.

Grey and harbour seals come ashore regularly throughout the year between foraging trips and additionally spend significantly more time ashore during the moulting period (February-April in grey seals; August in harbour seals) and particularly the pupping season (October-December in grey seals; June-July in harbour seals). Animals most at risk from oil coming ashore on seal haul-out sites and breeding colonies are neonatal pups. These animals are born without any blubber and rely on their prenatal fur (the white lanugo in grey seals) and metabolic activity for thermal balance. They are therefore more susceptible than adults to external oil contamination (Ekker, Lorentsen and Rov, 1992). Grey seals remain on the breeding colonies until they are weaned and unlike adults or juveniles, would be unable to

Strategic Environmental Assessment - SEA2

Technical Report 006 - Marine Mammals

leave the contaminated area. Females may also abandon contaminated pups during an oil spill, leading to starvation and premature death.

3.2.3.5 Oil dispersants

There have been no specific studies on the direct acute or chronic toxicity of oil dispersants to seals and cetaceans. The toxicity of oil spill dispersants to aquatic organisms under laboratory conditions appears to relate primarily to the chemical composition of the individual dispersant. For example, the type of solvent, aromatic content (in oil based dispersants), functional group(s) and molecular structure of the surfactants, chemical stability, and the concentration. Other factors that are important in oil spill dispersant aquatic toxicity are the duration of exposure of the organism, water temperature of the sea, oxygen content of the seawater, organism species/type, organism age, organism stage of growth/development, organism health. Indirect effects may occur if the prey items of marine mammals further down the food chain are affected.

3.2.4 Gaps in knowledge

With respect to the impact of oil exploration activities on contaminant exposure in marine mammals, no recent studies on the uptake of PAHs by marine mammals around the UK or pelagic cetaceans, which may be more at risk than coastal species, exist, and there is no information on the potential effects of long term chronic exposure. Further studies are needed to determine current and background exposure levels in a variety of species and their prey, particularly prior to oil exploration and production activities within marine mammal foraging areas. In addition we have no information on alkylated phenols in marine mammals. This is particularly important since PAH sources from exploration and production are not now very significant (100 t/yr, OSPAR 2000) and most North sea PAHs come from terrestrial combustion sources (> 7000 t/yr).

Further work on the uptake and effect of polybrominated diphenyl ethers (the brominated flame retardants) on marine mammals is clearly needed, particularly as higher levels of these compounds, in a variety of invertebrates and fish as well as marine mammals, have been reported in the UK than elsewhere in Europe (Zegers *et al.* 2001).

Few investigations on contaminants in marine mammals have been able to address the effects at the population level. This is particularly important where, from dose-response studies, contaminants or mixtures of contaminants are likely to have effects on survival or fecundity. In particular we need to develop a framework in which the *population* risks can be evaluated. This has been investigated to some extent (Harwood *et al.* 1999) but more detailed empirical information is required. Early simulations suggest that mathematical and statistical models would be of great benefit to any risk assessment procedure.

3.3 Disease

3.3.1 Background

It has long been known that marine mammals harbour large numbers of macroparasites, such as nematodes and cestodes as well as various ectoparasites (Margolis 1954, Reijnders *et al.* 1982, Baker and Martin 1992). However, these parasites usually do not cause severe harm unless the animals have an underlying primary disease or are stressed for other reasons.

Strategic Environmental Assessment - SEA2

Technical Report 006 - Marine Mammals

There have been outbreaks of viral disease epidemics among seals and cetaceans world-wide and these seem to have increased in frequency, particularly in the US, in recent years (Harvell *et al.* 1999). In UK and European waters major epidemics from phocine distemper in harbour and grey seals (PDV) and morbillivirus (DMV) in Mediterranean striped dolphins were widely documented in 1988 and 1990 respectively (Dietz *et al.* 1989, Aguilar and Raga 1993). These were followed by other mass mortalities in the late 1990s, such as among Mediterranean monk seals, whose cause was disputed although some evidence pointed to PDV as the primary cause (Osterhaus *et al.* 1997, Harwood 1998, Hernandez *et al.* 1998).

Apart from such high profile, large scale epidemic diseases, seals are known to suffer from a range of viral and bacterial infectious diseases.

3.3.2 Sources of data

A number of reviews of infectious diseases in marine mammals have been published and the major sources are given below: Dierauf and Gulland (2001), Van Bresseem, Van Waerebeek and Raga. (1999), Harwood and Hall (1990), Visser, Teppema and Osterhaus (1991).

3.3.3 Knowledge

3.3.3.1 Viruses

Table 9 indicates the viral infections that have been reported among marine mammals. The morbilliviruses and influenza viruses have accounted for large scale mortalities around the world.

3.3.3.2 Bacteria

A range of organisms has been cultured from healthy and sick marine mammals and many are secondary infections in malnourished and starveling animals, particularly juveniles. (Baker 1984) found that 40% of the grey seal pups died of infections such as peritonitis and septicaemia. *Corynebacterium* and *Streptococcus* accounted for the majority of infections and during the 1988 PDV epidemic *Bordetella* organisms were isolated from a large proportion of the sick animals but was not found in healthy individuals (Munro *et al.* 1992). *Mycoplasmas* were also isolated in sick animals from the Wadden Sea and is thought to be the causative organism of seal finger (Madoff *et al.* 1991).

More recently *Brucella maris* has been isolated in seals and cetaceans from the North Sea (Patterson *et al.* 1998). Bacteriological investigations have shown these organisms to be significantly different from other *Brucella* species. Serological studies of seals in particular have shown evidence of widespread infection in ten species of cetaceans and four species of seal. However, pathological changes associated with *B. maris* solutions have only been found in a total of nine cetacean and two seals, largely sub-blubber abscessation and pneumonia. A laboratory worker was infected with one isolate indicating that this is a potential zoonotic agent (Patterson *et al.* 1998). However, in 1999 a report of *Brucella* inducing abortions in Bottlenose dolphins was reported. The causative organism was specific to this species and was name *Brucella delphini* (Miller *et al.* 1999). It is not known how these two isolates are related or if they are indeed the same organism.

Leptospira pomona has also been found in some marine mammals but has not been reported in those from UK waters. This organism can be highly pathogenic and has been

Strategic Environmental Assessment - SEA2

Technical Report 006 - Marine Mammals

associated with episodic outbreaks among California sea lions in which it causes abortion (Buck and Spotte 1986).

Tuberculosis (*Mycobacterium tuberculosis*) has been diagnosed in various fur seal and sea lion species, largely in Australia, New Zealand on the Argentine coast (Cousins *et al.* 1990, Forshaw and Phelps, 1991, Bastida, 1999). To our knowledge it has not yet been reported among European or North Sea marine mammal species.

Anthropogenic pathogens are largely found in marine mammals from the discharge of untreated sewage or effluent from facilities which contain domestic animals. Salmonella species associated with man or his domestic animals have been cultured from marine mammals directly or their faeces, particularly *Salmonella bovis-morbificans* and *S. enteritidis* ((Baker *et al.* 1995)). In some cases these have been associated with pathologies and septicaemia. It was found that between 1.4 and 11.8% of grey and harbour seals in the East coast of England taken into rehabilitation centres were positive for Salmonella. Although the origin of some of these organisms is not known, *S. bovis-morbificans* is generally specific to cattle and may indicate contamination of marine mammals by anthropogenic organisms.

3.3.3.3 Toxic Algae (Harmful Algal Blooms)

There have been a number of incidents in the US, and more recently the west coast of Africa, where toxins produced by algae have been associated with mortalities of marine mammals. Incidents include dinoflagellate toxins in Florida manatees and Humpback whales (Geraci *et al.* 1989, O'Shea *et al.* 1991), brevetoxins in Bottlenose dolphins (Geraci 1989), saxitoxin in sea otters (DeGange and Vacca 1989), and ciguatoxin in Hawaiian monk seals (Gilmartin *et al.* 1987). More recently a mass mortality among California sea lions was linked to *Pseudo-nitzschia australis* which produces domoic acid, a neurotoxin which was found in fish and in the body fluids of the sea lions which died (Scholin *et al.* 2000).

3.3.4 Gaps in Knowledge

Whilst there has been a considerable amount of recent research on infectious and pathogenic diseases in marine mammals, particularly in the 10 years following the morbillivirus outbreaks of the 1980s, we know surprising little about the incidence of infection in European seal populations. Strandings schemes designed to determine mortality rates and causes of death of marine mammals around the UK have been forced by limited funding to concentrate their efforts on cetaceans rather than seals. Serological surveys could provide invaluable data on the exposure and immunity of populations to various diseases. For example we have no current information on the proportion of the harbour seal population in Europe that are still protected against another outbreak of PDV.

A small scale survey of anthropogenic bacteria such as *Salmonella* has been conducted in seals but we have no information on the occurrence of anthropogenic viruses such as enteroviruses. Indeed some pilot work suggested or other sewage related organisms such as *Campylobacter* may be a risk for marine mammal health but this study has not been followed up.

Strategic Environmental Assessment - SEA2
Technical Report 006 - Marine Mammals

Table 9. Viruses in marine mammals – From Visser et al. (1991)

Virus Family	Virus	Species
Adenoviridae	Sea Lion Hepatitis Virus	California sea lion Sei whale
Herpesviridae	Alphaherpesvirinae Phocine herpesvirus-1 Uncharacterised herpesvirus	Harbour seal California sea lion Beluga whale Harbour porpoise
Poxviridae	Seal poxvirus Parapoxvirus Orthopoxvirus	Harbour seal Grey seal California sea lion Northern fur seal S. American sea lion Bottlenose dolphin White sided dolphin Harbour porpoise Grey seal
Picornaviridae	Picornavirus	Harbour seal Grey whale
Caliciviridae	San Miguel sea lion virus Calicivirus	California sea lion Northern fur seal Northern elephant seal Pacific walrus Stellar sea lion Grey seal Bottlenose dolphin Fin whale Grey whale Bowhead whale Sperm whale
Orthomyxoviridae	Influenzavirinae H7N7 Influenza A virus H4N5 H13N9 H13N2	Harbour seal Pilot whale Striped dolphin
Paramyxoviridae	Canine Distemper Virus (CDV) Phocine Distemper Virus (PDV) Porpoise Morbillivirus Dolphin Morbillivirus	Crabeater seal Baikal seal Harbour seal Grey seal Ringed seal Harp seal Harbour porpoise Striped dolphin
Coronaviridae	Coronavirus	Harbour seal
Rhabdoviridae	Rabies virus	Ringed seal
Retroviridae	Spumavirus	California sea lion
Papovaviridae	Papillomavirus	Burmeister's porpoise Cetacean spp.

4. BYCATCH AND OTHER NON-OIL MANAGEMENT ISSUES

4.1 Bycatch

The accidental capture of marine mammals in fishing gear is an issue of some current concern throughout EU waters, and beyond. Work by the SMRU since 1993 has been targeted at determining accidental catch ('bycatch') rates of marine mammals in several fisheries in UK waters.

North Sea waters are exploited by fishing vessels from several EU and other states, and there is a lack of detailed information on the activities of these vessels that hinders any assessment of the overall scale of bycatches in this area.

The primary gear types that have been associated with marine mammal bycatch elsewhere are gill and tangle nets and certain specific types of trawling. Trawling for pelagic species, in particular, has been linked to marine mammal bycatch in some parts of the world. An ongoing study of cetacean bycatch in pelagic trawling in the North Sea has not so far revealed any potentially significant conservation issues (SMRU unpublished).

The only other current significant threat to marine mammals from fishing gear appears to stem from the use of static nets, notably bottom set gill and tangle nets. These nets ensnare bottom feeding seals and cetaceans almost wherever they are used, and are probably the primary cause of more marine mammal mortalities in the North Sea and elsewhere than any other human induced source.

(Hall *et al.* 2001) used the SMRU seal tagging database to estimate the minimum level of seal mortality from tags returned from seals found in fishing gear. They estimated that a minimum of around 2% of all seals tagged were subsequently killed in fishing gear, and it is thought that most such mortality is in gill and tangle nets.

Harbour porpoises are also taken in bottom set gill and tangle nets. This species is predominantly bottom feeding, and appears to be particularly vulnerable to accidental entanglement in such nets. Typical bycatch rates are between 6 and 36 porpoises per 10,000 net km.hours. Typical fleets of nets may be 1km long and are soaked for 24 hours, so that an average kill rate per haul is about one porpoise in every 70-420 net hauls, depending on the type of fishery. Highest bycatch rates are observed in the short nets that are set around wrecks in the central North Sea (Northridge and Hammond 1999).

The major fishing fleets involved in bottom set gillnetting and tangle netting in the North Sea are from Denmark and the UK. The current estimate of the average number of porpoises killed annually in the Danish gill and tangle net fisheries of the North Sea is 6785 (Vinther 1999). The much smaller UK fleet is estimated to take around 450 porpoises per year currently (Northridge and Hammond 1999). The total estimated kill of around 7,200 porpoises per year in the North Sea is thought to exceed sustainable levels. In addition, there is Norwegian gillnetting in the northern North Sea, and small amounts of German and Dutch netting that have not been adequately documented.

Danish gill and tangle net effort is heaviest in the Danish sector of the North Sea, but historically some fishing effort has extended into the UK sector and would have occurred in

Strategic Environmental Assessment - SEA2

Technical Report 006 - Marine Mammals

the southern and perhaps central SEA-2 blocks. Norwegian gillnetting probably occurs in the northern SEA-2 block, although this has not been quantified.

UK gillnet and tangle net fisheries operate predominantly in coastal waters, in the central southern North Sea and to the west of Shetland. There is very little UK gill/tangle net effort in the northern and central SEA-2 blocks. The southern SEA-2 block is fairly heavily fished by gill and tangle netters, although observed catch rates within this area have been lower than those in the zone between the southern and central SEA-2 blocks, possibly because of lower porpoise densities in this area.

It is not possible to say how many porpoises may become bycaught in the SEA-2 blocks; animals bycaught there would in any case belong to a population from a wider area.

Bycatches of other small cetacean species in the North Sea have been recorded very rarely, and present information suggests that bycatch rates are unsustainable only for harbour porpoises in the North Sea.

4.2 Other issues

Another potential source of mortality to cetaceans in the North Sea may be through collisions with shipping. Whales are occasionally reported to be struck and killed, especially by fast-moving ferries, in other parts of the world, and smaller cetaceans can also be impacted by propeller strikes from small vessels. In some areas, where ships are numerous and cetacean numbers are depleted, this can be a serious cause for concern. There are very few data with which to estimate the frequency of such events in the North Sea, and consequently this has not been identified as a significant source of additional mortality in this region.

5. CONSERVATION FRAMEWORKS

5.1 Cetaceans

5.1.1 Europe

All cetacean species are listed on Annex IV (Animal and Plant Species of Community Interest in Need of Strict Protection) of the European Commission's Habitats Directive. Under Annex IV, the keeping, sale or exchange of such species is banned as well as deliberate capture, killing or disturbance.

The harbour porpoise and the bottlenose dolphin are also listed in Annex II of the Habitats Directive. Member countries of the EU are required to consider the establishment of Special Areas of Conservation (SACs) for Annex II species. Candidate SACs have been established for the bottlenose dolphin in the Moray Firth and in Cardigan Bay. No candidate SACs have yet been established for the harbour porpoise.

The Agreement on the Conservation of Small Cetaceans of the Baltic and North Seas (ASCOBANS) was formulated in 1992 and has been signed by seven European countries including the UK. Under the Agreement, provision is made for protection of specific areas, monitoring, research, information exchange, pollution control and heightening public awareness. Measures cover the monitoring of fisheries interactions and disturbance, resolutions for the reduction of by-catches in fishing operations, and recommendations for the establishment of specific protected areas for cetaceans.

Strategic Environmental Assessment - SEA2

Technical Report 006 - Marine Mammals

All cetacean species are listed on Annex A of EU Council Regulation 338/97 and are therefore treated by the EU as if they were on CITES Appendix I, thus prohibiting commercial trade.

5.1.2 UK

In British waters, all species of cetacean are protected under the Wildlife and Countryside Act 1981 and the Wildlife (Northern Ireland) Order 1985. Whaling is illegal under the Fisheries Act 1981.

Guidelines to minimise the effects of acoustic disturbance from seismic surveys, agreed with the oil and gas industry, were published by the then Department of the Environment in 1995 and revised in 1998. Members companies of the UK Offshore Operators Association (UKOOA) have indicated that they will comply with these Guidelines in all areas of the UK Continental Shelf. Under the Guidelines there is a requirement for visual and acoustic surveys of the area prior to seismic testing to determine if cetaceans are in the vicinity, and a slow and progressive build-up of sound to enable animals to move away from the source.

In 1999, the then Department of the Environment, Transport and the Regions produced two sets of guidelines aimed at minimising disturbance to cetaceans. The first, Minimising Disturbance to Cetaceans from Whale Watching Operations, is aimed at tour operators and members of the public involved in whale, dolphin and porpoise watching activities. The second, Minimising Disturbance to Cetaceans from Recreation at Sea, is aimed at anyone involved in any recreational activity in UK coastal waters who may incidentally encounter cetaceans.

5.2 Seals

5.2.1 Europe

The grey and harbour seal are listed in Annex II of the Habitats Directive under which member countries of the EU are required to consider the establishment of Special Areas of Conservation (SACs). A number of terrestrial candidate SACs have been established for grey and harbour seals around the coast of the UK; there are currently no marine candidate SACs.

All seal species are listed on Annex A of EU Council Regulation 338/97 and are therefore treated by the EU as if they were on CITES Appendix I, thus prohibiting commercial trade.

5.2.2 UK

Under the Conservation of Seals Act, 1970, grey and harbour seals in the vicinity of fishing nets can be killed to prevent damage to the nets or to fish in the nets. Both species are protected during the breeding season: September-December in the case of grey seals; June-August in the case of harbour seals. However, licences to kill seals may be granted for any time of the year for specific listed purposes.

Under the Act, the Natural Environment Research Council (NERC) has a duty to provide scientific advice to government on matters related to the management of seal populations. NERC has appointed a Special Committee on Seals (SCOS) to formulate this advice so that it may discharge this statutory duty. Formal advice is given annually based on the latest

Strategic Environmental Assessment - SEA2

Technical Report 006 - Marine Mammals

scientific information provided to SCOS by SMRU. SMRU also provides to government scientific review of applications for licences to shoot seals, and information and advice in response to parliamentary questions and correspondence.

6. CONCLUSIONS

The SEA-2 blocks are important areas for the three most abundant cetacean species in the North Sea: minke whale, harbour porpoise, and white-beaked dolphin. However, all are also distributed in surrounding areas. Only for the harbour porpoise is there evidence that the SEA-2 blocks (northern and central) are particularly important areas.

Grey and harbour seals do occur in the SEA-2 blocks but the populations as a whole spend a very small proportion of their time in these areas. Activities in the SEA-2 blocks are unlikely to result in a population effect for seals in the North Sea.

The most abundant marine mammal species in the North Sea (grey and harbour seals, minke whales, harbour porpoises and white-beaked dolphins) are important predators in this region feeding on a wide range of prey types including a number of important commercial species. The abundance and availability of fish prey is clearly of prime importance in determining the reproductive success or failure of marine mammals in this area, as elsewhere. Changes in the availability of principal forage fish may be expected to result in population level changes of marine mammals but it is currently not possible to predict the extent of this.

Seals are sensitive to the low frequency sounds generated by oil exploration and production. Small cetaceans are relatively insensitive to low frequencies. Circumstantial evidence suggests that large whales may have good low frequency hearing.

It is likely that seismic survey work will affect foraging behaviour by any seals and large whales in the SEA-2 blocks. Current mitigation methods are probably generally effective in preventing physical damage.

There are no reliable data to suggest that vessel noise or drilling noise adversely affect seals or small cetaceans but there are indications that large whales may avoid areas of intense activity.

Decommissioning work that involves the use of explosives is likely to impact animals in the vicinity, potentially causing injury and death at close range, and causing hearing damage at substantial ranges. Difficulties in observing and monitoring behaviour and the apparent attractiveness of submerged structures means that some marine mammals, especially seals, are likely to be damaged in blasts. Current mitigation methods are unlikely to be totally effective.

Contaminants, such as polychlorinated biphenyls, DDTs and chlorinated pesticides probably have toxic effects on the reproductive and immune systems of marine mammals. There is little evidence that heavy metals cause substantial toxic responses, except at high concentrations. Cetacean species which feed lower down the food chain may be at risk from exposure to polyaromatic hydrocarbons, although very little is known about current exposure levels or the effects of chronic exposure in marine mammals.

Major oil spills are likely to result in direct mortality. More generally, marine mammals are less vulnerable than seabirds to fouling by oil, but they are at risk from chemicals

Strategic Environmental Assessment - SEA2

Technical Report 006 - Marine Mammals

evaporating from the surface of an oil slick at sea within the first few days. Individuals may drown as a result of associated symptoms. Neonatal seal pups are at risk from oil coming ashore.

Bycatch in gill and tangle nets represents a significant source of mortality for harbour porpoises in the North Sea and the total estimated mortality per year is thought to exceed sustainable levels. It is not possible to say how many porpoises may become bycaught in the SEA-2 blocks; animals bycaught there would in any case belong to a population from a wider area. Bycatch is not a significant issue for other species.

7. REFERENCES

- Aguilar, A. 1985. Compartmentation and reliability of sampling procedures in organochlorine pollution surveys of cetaceans. *Residue Reviews* 95: 91-114.
- Aguilar, A. and A. Borrell 1997. *Marine Mammals and Pollutants - An annotated bibliography*. Barcelona, Fundacio pal Desenvolupament Sostenible.
- Aguilar, A. and A. Borrell. 1994. Abnormally high polychlorinated biphenyl levels in striped dolphins (*Stenella coeruleoalba*) affected by the 1990-1992 Mediterranean epizootic. *Science of the Total Environment* 154: 237-247.
- Aguilar, A. and J. A. Raga. 1993. The striped dolphin epizootic in the Mediterranean Sea. *Ambio* 22: 524-528.
- Aguilar, A. Borrell, A. and Pastor, T. 1999. Biological factors affecting variability of persistent pollutant levels in cetaceans. *J. Cetacean Res. Manage. (Special Issue 1)*: 83-116.
- Andre, M., Kamminga, C., & Ketten, D. 1997 Are low-frequency sounds a marine hazard: a case study in the Canary Islands. In *Underwater Bio-sonar and Bioacoustic Symposium*, Vol. 19, pp. 77 - 84, Loughborough University.
- Anon. 1999. Rare cetacean sightings in the UK and Ireland during 1997 and 1998. *Soundings (Newsletter for the Sea Watch Foundation)* 5 (1/2): 2 pp.
- Baker, J. R. 1984. Mortality and morbidity in Grey seal pups (*Halichoerus grypus*). Studies on its causes, effects of environment, the nature and sources of infectious agents and the immunological status of pups. *Journal of Zoology*, London 203: 23-48.
- Baker, J. R. A. Hall, L. Hiby, R. Munro, I. Robinson, H. M. Ross, and J. F. Watkins. 1995. Isolation of salmonellae from seals from UK waters. *Veterinary Record* 136: 471-472.
- Baker, J.R. and Martin, A.R. 1992. Causes of mortality and parasites and incidental lesions in harbour porpoises (*Phocoena phocoena*) from British waters. *The Veterinary Record* 130: 554-558.
- Balcomb, K C. & Claridge, D.E. 2001. A mass stranding of cetaceans caused by naval sonar in the Bahamas. *Bahamas Journal of Science* 8(2): 1-12.
- Barger, J.E. & Hamblen, W.R. 1980. The air gun impulsive underwater transducer. *J.Acoust.Soc.Am.* 68(4): 1038-1045
- Bastida, R., Loureiro, J., Quse, V., Bernardelli, A., Rodriguez, D & Costa, E. 1999. Tuberculosis in a wild subantarctic fur seal from Argentina. *Journal of Wildlife Diseases*, 35: 796-798.
- Beland, P. S. Deguise, C. Girard, A. Lagace, D. Martineau, R. Michaud, D. C. G. Muir, R. J. Norstrom, E. Pelletier, S. Ray, and L. R. Shugart. 1993. Toxic compounds and health and reproductive effects in St- Lawrence beluga whales. *Journal of Great Lakes Research* 19: 766-775.
- Bergman, A. and M. Olsson. 1985. Pathology of Baltic Grey seal and Ringed seal females with special reference to adrenocortical hyperplasia: Is environmental pollution the cause of a widely distributed disease syndrome? *Finnish Game Research* 44: 47-62.

Strategic Environmental Assessment - SEA2

Technical Report 006 - Marine Mammals

- Bergman, A. M. Olsson, and S. Reiland. 1992. Skull-bone lesions in the Baltic grey seal (*Halichoerus grypus*). *Ambio* 21: 517-519.
- Biasoni, N., Miller, P., J.O., & Tyack, P. 2000 Preliminary results of the effects of SURTASS-LFA sonar on singing humpback whales. Woods Hole Oceanog. Inst. Terch Rept., 23.
- Bjørge, A. and Øien, N. 1995. Distribution and abundance of harbour porpoise, *Phocoena phocoena*, in Norwegian waters. *Rep. Int. Whal. Commn. (Special Issue 16)*: 89-98.
- Bohne, B.A., Bozzay, D.G., & Thomas, J.A. 1986 Evaluation of inner ear pathology in Weddell seals. *Antarctic Journal of the United States*, 21, 208.
- Bohne, B.A., Thomas, J.A., Yohe, E.R., & Stone, S.H. 1985 Examination of potential hearing damage in Weddell Seals (*Leptonychotes weddelli*) in McMurdo Sound, Antarctica. *Antarctic Journal of the United States*, 20, 174-176.
- Bond, P. 1993 Determination of petroleum contamination in common and grey seals from eastern Scotland. MSc Thesis, School of Natural and Environmental Sciences, Coventry, UK.
- Booth, C. 1998. Sperm whales in Orkney. *Soundings (Newsletter for the Sea Watch Foundation)*, 4 (1/2): 10.
- Bowles, A.E., Smultea, M., Würsig, B., DeMaster D. P., and Palka, D. 1994. Relative abundance and behaviour of marine mammals exposed to transmissions from the Heard Island Feasibility Test. *J. Acoust. Soc. Am.* 96(4):2469-2484.
- Bowles, D. 1999 An overview of the concentrations and effects of metals in cetacean species. *J. Cetacean Res. Manage. (Special Issue 1)*: 125-148.
- Britt, J.O. and Howard, E.B. 1983 Tissue residues of selected environmental contaminants in marine mammals. In E.B. Howard (ed) *Pathobiology of marine mammal diseases Vol II*, pages 79-94. CRC Press Boca Raton, FL.
- Brown, E.G. and Pierce, G.J. 1998. Monthly variation in the diet of harbour seals in inshore waters along the southeast Shetland (UK) coastline. *Mar. Ecol. Prog. Ser.* 167: 275-289.
- Brundrit, G., Krige, L., Palmer, D., Forbes, A. & Metzger, K. 1994, Acoustic thermometry of ocean climate: Feasibility Ascension-Cape Town. *Proc. 2nd European Conference on Underwater Acoustics, Vol. II*, ed: Bjorno, L.. pp:1019-1024
- Buck, J. D. and S. Spotte. 1986. The occurrence of potentially pathogenic vibrios in marine mammals. *Marine Mammal Science* 2: 319-324.
- Burt, M.L. Hedley, S.L. Borchers, D.L. and Buckland, S.T. 1999. Spatial modelling of data from Project SCANS. Research Unit for Wildlife Population Assessment, University of St Andrews. Report number 001/00.
- Bustamante, P. F. Caurant, S. W. Fowler, and P. Miramand. 1998. Cephalopods as a vector for the transfer of cadmium to top marine predators in the north-east Atlantic Ocean. *Science of the Total Environment* 220: 71-80.
- Couperus, A.S. 1994. Killer whales (*Orcinus orca*) scavenging on discards of freezer trawlers northeast of the Shetland Islands. *Aquat. Mamm.* 20: 47-52.
- Cousins, D.V., Francis, B.R., Gow, B.L., Collins, D.M., McGlashan, C. H., Gregory, A., & Mackenzie, R.M. 1990. Tuberculosis in captive seals: Bacteriological studies on an isolate belonging to the *Mycobacterium tuberculosis* complex. *Research in Veterinary Science* 48: 196-200.
- Crum, L.A. & Mao, Y. 1996 Acoustically enhanced bubble growth at low frequencies and its implications for human diver and marine mammal safety. *Journal of the Acoustical Society of America*, 99, 2898-2907.
- Cuvin-Aralar, L.A. and Furness, R.W. 1991 Mercury and selenium interaction: A review. *Ecotoxicol. and Environ. Safety* 21: 348-364.
- DeGange, A. R. and M. M. Vacca. 1989. Sea Otter mortality at Kodiak Island, Alaska during summer 1987. *Journal of Mammalogy* 70: 836-838.

Strategic Environmental Assessment - SEA2

Technical Report 006 - Marine Mammals

- Desportes, G., and R. Mouritsen,. 1993. Preliminary results on the diet of long-finned pilot whales off the Faroe Islands. Reports of the International Whaling Commission, Cambridge, Special Issue 14: 233-262.
- DeSwart, R. L. P. S. Ross, L. J. Vedder, H. H. Timmerman, S. Heisterkamp, H. Van Loveren, J. G. Vos, P. J. H. Reijnders, and A. D. M. E. Osterhaus. 1994. Impairment of immune function in harbor seals (*Phoca vitulina*) feeding on fish from polluted waters. *Ambio* 23: 155-159.
- Dierauf, Leslie A. Gulland, Frances M. D (Eds) 2001 CRC Handbook of Marine Mammal Medicine CRC Press, London.
- Dietz, R. M.-P. Heide-Jorgensen, and T. Harkonen. 1989. Mass deaths of harbor seals (*Phoca vitulina*) in Europe. *Ambio* 18: 258-264.
- Ekker, M., Lorentsen, S.-H., and Rov, N. 1992 Chronic oil-fouling of grey seal pups at the Froan breeding ground, Norway. *Marine Pollution Bulletin*, 24: 92-93.
- Evans, P.G.H. 1988. Killer whales (*Orcinus orca*) in British and Irish waters. *Rit Fiskideildar* XI: 42-54.
- Fisher, P. R., and E. G. Brown. 2001. Photo-identification of North Atlantic Killer whales. In. *Shetland Wildlife*.
- Fitch, J.E & P.H. Young 1948. Use and effect of explosives in California coastal waters. *Calif. Fish & Game* 34(2):53-70
- Forshaw, D. and Phelps, G.R. 1991. Tuberculosis in a captive colony of pinnipeds. *Journal of Wildlife Diseases* 27: 288-295.
- Frantzis, A. 1998 Does acoustic testing strand whales? *Nature*, 392, 29.
- Fraser, F. C. 1946. Report on Cetacea stranded on the British coasts from 1933 to 1937. Report on Cetacea 12, British Museum (Natural History), London.
- Fraser, F. C. 1974. Report on Cetacea stranded on the British coasts from 1948 to 1966. 14, British Museum (Natural History), London.
- Frost, K. J. and L. F. Lowry. 1993. Marine Mammals Study Number 5: Assessment of injury to harbor seals in Prince William Sound, Alaska, and adjacent areas following the Exxon Valdez oil spill. State-Federal Natural Resource Damage Assessment 95pp.
- Fuller, G.B. and Hobson, W.C. 1986. Effect of PCBs on reproduction in mammals. In: J.S. Waid (ed.) *PCBs and the Environment Vol II*: 101-125pp. CRC Press, Boca Raton, Florida,.
- Geraci, J. R. 1989 Clinical investigation of the 1987-1988 mass mortality of bottlenose dolphins along the central and south Atlantic coast. Final report to National Marine Fisheries Service, US Navy and Marine Mammal Commission, University of Guelph, Ontario.
- Geraci, J. R. and D. J. St. Aubin 1990. *Sea Mammals and Oil: Confronting the Risks*. San Diego, Academic Press.
- Geraci, J. R. D. M. Anderson, R. J. Timperi, D. J. St Aubin, G. A. Early, J. H. Prescott, and C. A. Mayo. 1989. Humpback whales (*Megaptera novaeangliae*) fatally poisoned by dinoflagellate toxin. *Canadian Journal of Fish and Aquatic Sciences* 46: 1895-1898.
- Gilmartin, W. G. R. L. DeLong, A. W. Smith, L. A. Griner, and M. D. Dailey. 1987. An investigation into unusual mortality in the Hawaiian monk seal *Monachus schauinslandi*.
- Gisiner, R.C. 1998. Workshop on the effects of anthropogenic noise on the marine environment. Marine Mammal Science Program Office of Naval Research.
- Goertner, J.F. 1982. Prediction of underwater explosion safe ranges for sea mammals. NSWC/WOL TR-82-188, Rep. No. NTIS AD-A139823. Naval Surface Weap. Cent., White Oak Lab., Silver Spring, MD.
- Goold, J.C. & Fish, P.J. 1998 Broadband spectra of seismic survey air-gun emissions, with reference to dolphin auditory thresholds. *Journal of the Acoustical Society of America*, 103, 2177-2184.

Strategic Environmental Assessment - SEA2

Technical Report 006 - Marine Mammals

- Goold, J.C. 1996 Acoustic assessment of populations of common dolphin *Delphinus delphis* in conjunction with seismic surveying. *Journal of the Marine Biological Association of the United Kingdom*, 76, 811-820.
- Gordon, J. In Press. Measuring ranges to animals at sea using photographic and video images. *Journal of Applied Ecology*.
- Gordon, J., Swift, R., Gillespie, D., Chappel. O , Lewis, T., & Belford, R. 2000 The role of Acoustic Monitoring in minimising the impact of Seismic Acquisition on Cetaceans. In EAGE, Glasgow.
- Greene, C.R. 1987a. Acoustic studies of underwater noise and localization of whale calls. Sect. 2 In: Responses of bowhead whales to an offshore drilling operation in the Alaskan Beaufort Sea, autumn 1986. Rep. From LGL Ltd., King City, Ont., and Greeneridge Sciences Inc., Santa Barbara, CA, for Shell Western E & P Inc, Anchorage, AK. 128p.
- Hall, A. J. In Press. Organohalogenated contaminants in marine mammals. In P. Evans and A. Raga (eds). *Marine Mammals: Biology and Conservation*, pp 523-563. London, Kluwer Academic/Plenum Publishers.
- Hall, A. J. P. Pomeroy, and J. Harwood. 1992b. The descriptive epizootiology of phocine distemper in the UK during 1988/89. *Science of the Total Environment* 115: 31-44.
- Hall, A. J. R. J. Law, D. E. Wells, J. Harwood, H. M. Ross, S. Kennedy, C. R. Allchin, L. A. Campbell, and P. P. Pomeroy. 1992a. Organochlorine levels in common seals (*Phoca vitulina*) that were victims and survivors of the 1988 phocine distemper epizootic. *Science of the Total Environment* 115: 145-162.
- Hall, A. J., B. J. McConnell, and C. Breen. 2001. By-catch of Seals in Fishing Gear - A preliminary analysis of tagging data, 1950-2000. In: ICES WGMMPH, 10 pp, Copenhagen.
- Hall, A.J. and Walton, M.J. 1999. The diet of grey seals using faecal and fatty acid analysis. In: Harwood, J. (ed.) *Effects of Large-scale Industrial Fisheries on Non-Target Species (ELIFONTS)* . Final report under contract 95/78 to DGXIV of the European Commission.
- Hall, A.J. Kalantzi, O. Thomas, G.O. Jones, K.C. 2001. The effect of polybrominated diphenyl ethers on growth and development in grey seal (*Halichoerus grypus*) pups. Abstract Second Conference on Brominated Flame Retardants, Stockholm, Sweden, May 14-16. pp249-252.
- Hall, A.J. Watkins, J. and Hammond P.S. 1998. Seasonal variation in the diet of harbour seals in the south-western North Sea: prey availability and predator preferences. *Marine Ecology Progress Series* 170: 269-281.
- Hamanaka T., Ito, T., and Mishima, S. 1982. Age-related change and distribution of cadmium and zinc concentrations in the Steller sea lion (*Eumetopias jubata*) from the coast of Hokkaido, Japan. *Marine Pollution Bulletin* 13: 57-61.
- Hammond, P. S., H. Benke, P. Berggren, D. L. Borchers, S. T. Buckland, A. Collet, M. P. Heide-Jorgensen, S. Heimlich-Boran, A. R. Hiby, M. F. Leopold, and N. Oien. 1995. Distribution and abundance of the harbour porpoise and other small cetaceans in the North Sea and adjacent waters. Final Report to the European Commission LIFE 92-2/UK/027.
- Hammond, P.S. and M.A. Fedak (Editors) 1994. Grey Seals in the North Sea and their Interactions with Fisheries. Final Report to MAFF under contract MF 0503.
- Hammond, P.S. and Prime, J.H. 1990. The diet of British grey seals (*Halichoerus grypus*). In W.D. Bowen (Editor) *Population biology of sealworm (*Pseudoterranova decipiens*) in relation to its intermediate and seal hosts*. *Can. Bull. Fish. Aquat. Sci.* 222: 243-254.
- Hammond, P.S. Hall, A.J. and Prime, J. 1994. The diet of grey seals around Orkney and other island and mainland sites in northeastern Scotland. *J. Appl. Ecol.* 31: 340-350.
- Harmer, S. F. 1927. Report on Cetacea stranded on the British coasts from 1913 to 1926. Report on Cetacea 10, British Museum (Natural History), London.

Strategic Environmental Assessment - SEA2

Technical Report 006 - Marine Mammals

- Harvell, C. D. K. Kim, J. M. Burkholder, R. R. Colwell, P. R. Epstein, D. J. Grimes, E. E. Hofmann, E. K. Lipp, A. D. M. E. Osterhaus, R. M. Overstreet, J. W. Porter, G. W. Smith, and G. R. Vasta. 1999. Emerging marine diseases - Climate links and anthropogenic factors. *Science* 285: 1505-1510.
- Harwood, J. 1998. What killed the monk seals? *Nature*, London 393:17-18.
- Harwood, J. A. J. Hall, and B. Grenfell. 1999. Assessing the risks of marine mammal populations from exposure to contaminants. In T. J. O'Shea, R. R. Reeves, and A. K. Long, editors. *Marine Mammals and Persistent Ocean Contaminants*, Pages 104-109. Marine Mammal Commission, Keystone Colorado, US.
- Harwood, J. and A. Hall. 1990. Mass mortality in marine mammals: its implications for population dynamics and genetics. *Trends in Ecology and Evolution* 5: 254-257.
- Hassani, S., L. Antoine, and V. Ridoux. 1997. Diets of albacore, *Thunnus alalunga*, and dolphins, *Delphinus delphis* and *Stenella coeruleolba*, caught in the Northeast Atlantic albacore driftnet fishery: a progress report. *Journal of Northwest Atlantic Fishery Science* 22: 119-124.
- Helminen, M. Karppanen, E. and Koivisto. J.I. 1968. Mercury content of the ringed seal of Lake Saama. *Suom. Laaklehti* 74: 87-89.
- Hernandez, M. I. Robinson, A. Aguilar, L. M. Gonzalea, L. F. Lopez-Jurado, M. I. Reyer, E. Cacho, J. Franco, and V. L.-R. Eduardo Costas. 1998. Did algal toxins cause monk seal mortality? *Nature*, London 393: 28-29.
- Honda K., Yamamoto, Y., Kato, H., and Tatsukawa, R. 1987. Heavy metal accumulations and their recent changes in southern minke whales, *Balaenoptera acutorostrata* *Archives of Environmental Contamination and Toxicology*. 16: 209-216.
- Iwata, H. S. Tanabe, N. Miyazaki, and R. Tatsukawa. 1994. Detection of butyl tin compound residues in the blubber of marine mammals. *Marine Pollution Bulletin* 28: 607-612.
- Jepson, P. D. P. M. Bennett, C. R. Allchin, R. J. Law, T. Kuiken, J. R. Baker, E. Rogan, and J. K. Kirkwood. 1999. Investigating potential associations between chronic exposure to polychlorinated biphenyls and infectious disease mortality in harbour porpoises from England and Wales. *Science of the Total Environment* 243/244: 339-348.
- Kastak, D. & Schusterman, R.J. 1996 Temporary threshold shift in a harbour seal (*Phoca vitulina*). *Journal of the Acoustical Society of America*, 100, 1905-1908.
- Kastak, D., Schusterman, R.J., Southall, B.L., & Reichmuth, C.J. 1999 Underwater temporary threshold shift induced by octave-band noise in three species of pinniped. *Journal of the Acoustical Society of America*, 106, 1142-1148.
- Ketten, D.R. 1995. Estimates of blast injury and acoustic trauma zones for marine mammals from underwater explosions. In *Sensory system of Aquatic Mammals* (eds R.A. Kastelein, J.A. Thomas & P.E. Nachtigall), pp. 391 - 406. De Spil Publishers, Woerden, The Netherlands.
- Ketten, D.R. 1997 Structure and function in whale ears. *Bioacoustics*, 8, 103-135.
- Klasson Wehler, E. Mörck, A and Hakk H. 2001. Metabolism of polybrominated diphenyl ethers in the rat. Abstract Second Conference on Brominated Flame Retardants, Stockholm, Sweden, May 14-16. pp93-97.
- Krahn, M. M. Myers, M. S. Burrows, D.G. and Malins D.C. 1984. Determination of metabolites of xenobiotics in the bile of fish from polluted waterways. *Xenobiotica* 14: 633-646.
- Law, R. J. 1996. Metals in marine mammals. In N. W. Beyer, G. H. Heinz, and A. W. Redmond-Norwood, editors. *Environmental contaminants in wildlife: interpreting tissue concentrations*. Lewis Publishers. Boca Raton, FL. London.
- Law, R. J. and J. A. Whinnett. 1992. Polycyclic aromatic hydrocarbons in muscle tissue of harbour porpoises (*Phocoena phocoena*) from UK waters. *Marine Pollution Bulletin* 24: 550-553.
- Law, R. J. C. F. Fileman, A. D. Hopkins, J. R. Baker, J. Harwood, D. B. Jackson, S. Kennedy, A. R. Martin, and R. J. Morris. 1991. Concentrations of trace metals in the

Strategic Environmental Assessment - SEA2

Technical Report 006 - Marine Mammals

- livers of marine mammals (seals, porpoises and dolphins) from waters around the British Isles. *Marine Pollution Bulletin* 22: 183-191.
- Law, R. J. S. J. Blake, and C. J. H. Spurrier. 1999. Butyltin compounds in liver tissues of pelagic cetaceans stranded on the coasts of England and Wales. *Marine Pollution Bulletin* 38: 1258-1261.
- Lien, J., Todd, S., Stevick, P., Marques, F., and Ketten, D. 1993b. The reaction of humpback whales to underwater explosions: Orientation, movements, and behaviour. *J. Acoust. Soc. Am.* 94(3, Pt. 2):1849.
- Long, A.K. 2000. Marine Mammal Commission Working Bibliography on Contaminants in the Marine Environment and Effects on Marine Mammals. Marine Mammal Commission, Bethesda, Maryland, pp122.
- Madoff, S. K. Ruoff, and A. S. Baker. 1991. Isolation of a *Mycoplasma* species from a case of Seal Finger.
- Malme, C.I., Miles, C.W., Clark, P., Tyack, P., & Bird, J.E. 1984. Investigations of the potential effects of underwater noise from petroleum industry activities on migrating gray whale behaviour/Phase II: January 1984 migration, Rep. No. BBN Rep. 5851, Cambridge, MA.
- Malme, C.I., Miles, P.R., Clark, C.W., Tyack, P., & Bird, J.E. 1983. Investigations of the potential effects of underwater noise from petroleum industry activities on migrating gray whale behavior., Rep. No. BBN Report 5366. Bolt Beranek & Newman Inc, Cambridge, MA.
- Malme, C.I., Smith, P.W. & Miles, P.R. 1986. Characterisation of geophysical acoustic survey sounds. Minerals. Management Service, LA, California. Rep. OCS/MMS-86/0032
- Malme, C.I., Würsig, B., Bird, J.E., and Tyack, P. 1988. Observations of feeding gray whale responses to controlled industrial noise exposure. P. 55-73 In: W.M. Sackinger *et al.* (eds), Port and ocean engineering under arctic conditions, vol. II. Geophys. Inst., Univ. Alaska, Fairbanks. 111p.
- Margolis, L. 1954. List of the parasites recorded from seal mammals caught off the West Coast of North America. *Journal of the Fisheries Research Board of Canada* 11: 267-283.
- Martin, A. R. 1995. The diet of the harbour porpoise (*Phocoena phocoena*) in British waters. Paper presented to the Scientific Committee of the International Whaling Commission, Dublin, 6 pages.
- Martin, A.R. Reynolds, P. and Richardson, M.G. 1987. Aspects of the biology of Pilot whales (*Globicephala melaena*) in recent mass strandings on the British coast. *J. Zool. (Lond.)* 211: 11-23.
- Mate, B.R., Stafford, K.M., & Ljungblad, D.K. 1994 A change in sperm whale (*Physeter macrocephalus*) distribution correlated to seismic surveys in the Gulf of Mexico. In Proceedings of the 128th Meeting of the Acoustical Society of America, Vol. 96, pp. 3268-3269, Texas.
- Mattson, M. H. Raunio, O. Pelkonen, and E. Helle. 1998. Elevated levels of cytochrome P4501A (CYP1A) in ringed seals from the Baltic Sea. *Aquatic Toxicology* 43: 41-50.
- McCaulay, R.D. 1994. Seismic surveys. P. 19-121 In: J.M. Swan, J.M. Neff and P.C. Young (eds.), Environmental implications of offshore oil and gas developments in Australia/The findings of an independent scientific review. Austral. Petrol. Explor. Assoc., Sydney, N.S.W. 696p.
- McCauley, R.D., Jenner, M.N., Jenner, C., McCabe, K.A., & Murdoch, J. 1998 The response of humpback whales (*Megaptera novaeangliae*) to offshore seismic survey: Preliminary results of observations about a working seismic vessel and experimental exposures. *APPEA Journal*, 692-706.
- McConnell, B.J. Fedak, M.A. Lovell, P. and Hammond, P.S. 1999. Movements and foraging areas of grey seals in the North Sea. *Journal of Applied Ecology* 36: 573-590.

Strategic Environmental Assessment - SEA2

Technical Report 006 - Marine Mammals

- McDonald, M.A., Hildebrand, J.A., & Webb, S.C. 1995 Blue and fin whales observed on a seafloor array in the Northeast Pacific. *Journal of the Acoustical Society of America*, 98, 712-721.
- McDonald, M.A., Hildebrand, J.A., Webb, S., Dorman, L., and Fox, C.G. 1993. Vocalizations of blue and fin whales during a midocean ridge airgun experiment. *J. Acoust. Soc. Am.* 94(3, Pt.2):1849.
- Miller, P.J.O., Biassoni, N., Samuels, A., & Tyack, P.L. 2000 Whale songs lengthen in response to sonar. *Nature*, 405, 903-903.
- Miller, W. G. L. G. Adams, T. A. Ficht, N. F. Cheville, J. P. Payeur, D. R. Harley, C. House, and S. H. Ridgway. 1999. Brucella-induced abortions and infection in bottlenose dolphins (*Tursiops truncatus*). *Journal of Zoo and Wildlife Medicine* 30: 100-110.
- Mohl, B. 1981. Masking effects of Noise; their distribution in time and space. In *The question of sound from icebreaker operations: Proceedings from a workshop* (ed N.M. Peterson), pp. 259-266. Arctic Pilot Project, Calgary, Alberta
- Moore, P.W.B and Schusterman, R.J. 1987. Audiometric assessment of northern fur seals, *Callorhinus ursinus*. *Mar. Mamm. Sci.* 3(1):31-53.
- Mortensen, P. A. Bergman, A. Bignert, H.-J. Hansen, T. Harkonen, and M. Olsson. 1992. Prevalence of skull lesions in harbor seals *Phoca vitulina* in Swedish and Danish museum collections. *Ambio* 21: 520-524.
- Muir, D.C.G. Wagemann, R. Hargrave, B.T. Thomas, D.J. Peakall, D.B. and Norstrom, R.J. 1992. Arctic marine ecosystem contamination. *Science of the Total Environment* 122: 75-134.
- Munro, R. H. Ross, C. Cornwell, and J. Gilmour. 1992. Disease Conditions Affecting Common Seals (*Phoca vitulina*) around the Scottish Mainland, September-November 1988. *Science of the Total Environment* 115: 67-82.
- Museum, N. H. 1995. Studies on the biology of cetacea. Report to the Welsh Office WEP/100/154/6, Natural History Museum, London.
- Myrick, A.C., Cassano, E.R., & Oliver, C.W. 1990 Potential for physical injury, other than hearing damage, to dolphins from seal bombs used in the yellowfin tuna purse-seine fishery: Results from open-water tests, Admin. Rep. LJ-90-08. U.S. National Mar. Fish. Serv., La Jolla, CA.
- Northridge, S. P. 1988. Marine mammals and fisheries: a study of conflicts with fishing gear in British waters. International Institute for Environment and Development, London.
- Northridge, S. P., and P. S. Hammond. 1999. Estimation of porpoise mortality in UK gill and tangle net fisheries in the North Sea and west of Scotland. Paper presented to the Scientific Committee of the International Whaling Commission, May 1999, 11 pages + figures.
- Northridge, S. P., M. L. Tasker, A. Webb, C. J. Camphuysen, and M. F. Leopold. 1997. White-beaked *Lagenorhynchus albirostris* and Atlantic white-sided dolphin *L. acutus* distributions in Northwest European and US North Atlantic waters. Reports of the International Whaling Commission 47: 797-805.
- Northridge, S.P. Tasker, M.L. Webb, A. and Williams, J.M. 1995. Distribution and relative abundance of harbour porpoises (*Phocoena phocoena* L), white-beaked dolphins (*Lagenorhynchus albirostris* Gray) and minke whales (*Balaenoptera acutorostrata* Lacepède) around the British Isles. *ICES J. Mar. Sci.* 52: 55-66.
- NRC 2000 Marine Mammals and Low-Frequency Sound Progress Since 1994 National Academic Press, Washington DC.
- O'Shea, T. J. 1999. Environmental contaminants and marine mammals. In: J. E. I. Reynolds and S. A. Rommel (eds) *Biology of Marine Mammals*, pp 485-564. Washington and London, Smithsonian Institution Press
- O'Shea, T. J. G. B. Rathburn, and R. K. Bonde. 1991. An epizootic of florida manatees associated with a dinoflagellate bloom. *Marine Mammal Science* 7: 165-179.

Strategic Environmental Assessment - SEA2

Technical Report 006 - Marine Mammals

- OSPAR 2000. Quality Status Report Region II – Greater North Sea. OSPAR Commission, London.
- Osterhaus, A. J. Groen, H. Niesters, M. Van de Bildt, B. Martina, L. Vedder, J. Vos, H. Egmond, B. A. Sidi, and M. E. O. Barham. 1997. Morbillivirus in monk seal mass mortality. *Nature*, London 388: 838-839.
- Patterson, A.P. F.E. Howie, R.J. Reid, H.M. Ross, A. MacMillan, S. Brew and G. Foster 1998 *Brucella maris* infections in marine mammals from Scottish waters. Abstract to the European Wildlife Diseases Conference, Edinburgh, Sept. 1998.
- Pollock, C.M. Mavor, R. Weir, C.R. Reid, A. White, R.W. Tasker, M.L. Webb, A. and Reid, J.B. 2000. The distribution of seabirds and marine mammals in the Atlantic Frontier, north and west of Scotland. Joint Nature Conservation Committee. 92 pp.
- Prime, J.H. and Hammond, P.S. 1990. The diet of grey seals from the south-western North Sea assessed from analyses of hard parts found in faeces. *J. Appl. Ecol.* 27: 435-447.
- Rae, B. B. 1965. The food of the common porpoise (*Phocaena phocaena*). *Journal of Zoology* 146: 114-122.
- Rae, B. B. 1973. Additional notes on the food of the Common porpoise (*Phocoena phocoena*). *Journal of Zoology*, London 169: 127-131.
- Reeves, R. R., C. Smeenk, C. C. Kinze, R. L. Brownell, and J. Lien. 1999b. White-beaked dolphin. In: S. H. Ridgway and R. Harrison (eds). *Handbook of Marine Mammals*. Pages 1-30. Academic Press, London.
- Reeves, R. R., C. Smeenk, R. L. Brownell, and C. C. Kinze. 1999a. Atlantic white-sided dolphin. In: S. H. Ridgway and R. Harrison (eds). *Handbook of Marine Mammals*. Pages 31-56. Academic Press, London.
- Reid, J. Evans, P.G.H. and Northridge, S. (Eds). In press. An atlas of cetacean distribution on the northwest European continental shelf. Joint Nature Conservation Committee, Peterborough.
- Reid, R.J. and Patterson, T. 1998. Cetacean strandings in Scotland 1997. *Soundings* (Newsletter for the Sea Watch Foundation), 4 (1/2): 8.
- Reijnders, P. J. H. 1980. Organochlorine and heavy metal residues in harbour seals from the Wadden sea and their possible effects on reproduction. *Netherlands Journal of Sea Research* 14: 30-65.
- Reijnders, P. J. H. 1984. Man-Induced environmental factors in relation to fertility changes in pinnipeds. *Environmental Conservation* 11: 61-65.
- Reijnders, P. J. H. 1986. Reproductive failure in common seals feeding on fish from polluted coastal waters. *Nature*, London 324: 456-457.
- Reijnders, P. J. H. A. Aguilar and G.P. Donovan 1999. Chemical Pollutants and Cetaceans. *Journal of Cetacean Research and Management*, Special Issue 1. International Whaling Commission, Cambridge.
- Reijnders, P. J. H. B. Clausen, J. L. Van Haaften, and J. Van der Kamp. 1982. Diseases and Parasites in Harbour seals of the Wadden Sea. In P. J. H. Reijnders and W. J. Wolff (eds). *Marine Mammals of the Wadden Sea*, Pages 33-37. AA Balkema, Rotterdam.
- Reijnders, P.J.H. Verriopoulos, G. and Brasseur, S.M.J.M. (Eds). 1997. Status of pinnipeds relevant to the European Union. *IBN Scientific Contributions* 8. DLO Institute for Forestry and Nature Research, Wageningen.
- Richardson, W.J., Greene, C.R.J., Malme, C.I., & Thomson, D.H. 1995 *Marine Mammals and Noise*. Academic Press, Inc., San Diego, CA.
- Richmond, D.R., Yelverton, J.T., & Fletcher, F.R. 1973. Far-field underwater blast injuries produced by small charges, Rep. No. DNA 3081T. Lovelace Foundation for Medical Education and Research.
- Ridgway, S.H. and Joyce, P.L. 1975. Studies on seal brain by radiotelemetry. *Rapp. P.-V Réun. Cons. Int. Explor. Mer* 169:81-91.

Strategic Environmental Assessment - SEA2

Technical Report 006 - Marine Mammals

- Ridgway, S. and M. Reddy. 1995. Residue levels of several organochlorines in *Tursiops truncatus* milk collected at varied stages of lactation. *Marine Pollution Bulletin* 30: 609-614.
- Ridgway, S., Carder, D., Schlundt, C., Kamoinick, T., & Elsberry, W. 1997 Temporary shift in delphinoid masked hearing thresholds. *Journal of the Acoustic Society of America*, 102, 3102.
- Ridgway, S.H. & Carder, D.A. 1997 Hearing deficits measured in some *Tursiops truncatus*, and discovery of a deaf/mute dolphin. *Journal of the Acoustical Society of America*, 101, 590-594.
- Ridgway, S.H. & Howard, R. 1982 Dolphins and the Bends. *Science*, 216, 651-651.
- Ross, D. 1976. *Mechanics of underwater noise*. Pergamon, New York. 325pp.
- Ross, P. S. R. L. DeSwart, P. J. H. Reijnders, H. Van Loveren, J. G. Vos, and A. D. M. E. Osterhaus. 1995. Contaminant-related suppression of delayed-type hypersensitivity and antibody responses in harbor seals fed herring from the Baltic sea. *Environmental Health Perspectives* 103: 162-167.
- Santos, M. B., G. J. Pierce, H. M. Ross, R. J. Reid, and B. Wilson. 1994. Diets of small cetaceans from the Scottish coast. *International Council for the Exploration of the Sea, Marine Mammal Committee*, 16 pages. ICES, Copenhagen.
- Scholín, C. A. F. Gulland, G. J. Doucette, S. Benson, M. Busman, F. P. Chavez, J. Cordaro, R. DeLong, A. De Vogelaere, J. Harvey, M. Haulena, K. Lefebvre, T. Lipscomb, S. Loscutoff, L. J. Lowenstine, R. Marin III, P. E. Miller, W. A. McLellan, P. D. R. Moeller, C. L. Powell, T. Rowles, P. Silvagni, M. Silver, T. Spraker, V. Trainer, and F. M. Van Dolah. 2000. Mortality of sea lions along the central California coast linked to a toxic diatom bloom. *Nature (Lond.)* 403: 80-84.
- Schweder, T. Skaug, H.J. Dimakos, X.K. Langaas, M. and Øien, N. 1997. Abundance of northeastern Atlantic minke whales, estimates for 1989 and 1995. *Rep. Int. Whal. Commn.* 47: 453-483.
- Sheldrick, M.C. 1976. Trends in the strandings of Cetacea on the British coast 1913-72. *Mamm. Rev.* 61: 15-23.
- Shetland Sea Mammal Group 2001. Downloaded from <http://www.wildlife.shetland.co.uk> on 6/6/2001.
- Simmonds, M. 1997. Moby: The Untold Story. *Soundings* (Newsletter for the Sea Watch Foundation), 3 (3): 1-3.
- Sipes, I.G. and Gandolfi, A.J. 1991 Biotransformation of toxicants. In: Amdur, M.O. Doull, J. and Klaassen, C.D. (Eds) *Casarett and Doull's Toxicology*, pp 88-126. Pergamon Press, New York, 4th Edition,
- Smith, D.R. Niemeyer, S. Estes, J.A. and Flegal A.R. 1990. Stable lead isotopes evidence of anthropogenic contaminant in Alaskan sea otters. *Environmental Science and Technology* 24: 1517-1521.
- Sorensen, P.W., Medved, R.J., Hyman, M.A.M. and Winn, H.E. 1984. Distribution and abundance of cetaceans in the vicinity of human activities along the continental shelf of the northwestern Atlantic. *Mar. Environ. Res.* 12(1):69-81.
- Southall, B. L., R. J. Schusterman, *et al.* 2000. "Masking in three pinnipeds: Underwater, low-frequency critical ratios." *Journal of the Acoustical Society of America* 108(3): 1322-1326.
- Stone, C.J. 1997. Cetacean observations during seismic surveys in 1996. *JNCC Report*, No. 228.
- Stone, C.J. 1998. Cetacean observations during seismic surveys in 1997. *Joint Nature Conservancy Committee. Report No. 278.*
- Stone, C.J. 2000. Cetacean observations during seismic surveys in 1998. *Joint Nature Conservancy Committee. Report No. 301.*
- Swift, R.J., Butler, J., Gozalbes, P., & Gordon, J. 1999 The effects of seismic airgun arrays on the acoustic behaviour and distribution of sperm whale and other cetaceans in the

Strategic Environmental Assessment - SEA2

Technical Report 006 - Marine Mammals

- north east Atlantic / Atlantic Frontier. In European Cetacean Society 13th Annual Conference (ed P.G.H. Evans), pp. 104. European Cetacean Society.
- Thomas, J., Moore, P., Withrow, R. and Stoermer. 1990b. Underwater audiogram of a Hawaiian monk seal (*Monachus schauinslandi*). *J. Acoust. Soc. Am* 87(1):417-420.
- Thompson, D., Sjöberg, M., Bryant, M.E., Lovell, P., & Bjørge, A. 1998. Behavioural and physiological responses of harbour (*Phoca vitulina*) and grey (*Halichoerus grypus*) seals to seismic surveys., Rep. No. Report to European Commission of BROMMAD project. MAS2 C7940098.
- Thompson, P.M. McConnell, B.J. Tollit, D.J. Mackay, A. Hunter, C. and Racey, P.A. 1996. Comparative distribution, movements and diet of harbour and grey seals from the Moray Firth, NE Scotland. *J. Appl. Ecol.* 33: 1572-1584.
- Timbrell, J.A. 1991. Principles of Biochemical Toxicology. 2nd Edition, Taylor and Francis, London. pp415.
- Tolley, K.A. Rosel, P.E. Walton, M. Bjørge, N and Øien, N. 1999. Genetic population structure of harbour porpoises (*Phocoena phocoena*) in the North Sea and Norwegian waters. *J. Cetacean Res. Manage.* 1(3): 265-274.
- Tollit, D.J. and Thompson, P.M. 1996. Seasonal and between year variations in the diet of harbour seals in the inner Moray Firth, NE Scotland. *Can. J. Zool.* 74: 1110-1121.
- Tollit, D.J. Greenstreet, S.P.R. and Thompson, P.M. 1997. Prey selection by harbour seals, *Phoca vitulina*, in relation to variations in prey abundance. *Can. J. Zool.* 75: 1508-1518.
- Trasky, L.L. 1976. Environmental impact of seismic exploration and blasting in the aquatic environment. Report from Alaska Dept. Fish & Game, Anchorage, AK, 23pp.
- Troisi, G. M. and C. F. Mason. 1997. Cytochromes P450, P420 and mixed-function oxidases as biomarkers of polychlorinated biphenyl (PCB) exposure in harbour seals (*Phoca vitulina*). *Chemosphere* 35: 1933-1946.
- TSEG (Trilateral Seal Expert Group) 2000. Common Seals in the Wadden Sea in 2000. *Wadden Sea Newsletter* 2000 – 2: 29.
- Turnbull, S.D. & Terhune, J.M., 1993, repetition enhances hearing detection thresholds in a harbor seal (*Phoca-vitulina*). *Can. J. Zool.* 71: 926-932.
- Turnpenny, A.W.H. & Nedwell, J.R. 1994. The effect on marine fish, diving mammals and birds of underwater sound generated by seismic surveys. Fawley Aquatic Research Laboratories Ltd. Consultancy report for UKOOA, FRC 089/94:40pp.
- Van Bresse, M. F. K. Van Waerebeek, and J. A. Raga. 1999. A review of virus infections of cetaceans and the potential impact of morbilliviruses, poxviruses and papillomaviruses on host population dynamics. *Diseases of Aquatic Organisms* 38: 53-65.
- Vinther, M. 1999. Bycatches of harbour porpoises (*Phocoena phocoena* L.) in Danish set net fisheries. *Journal of Cetacean Research and Management* 1: 123-136.
- Visser, I. K. G. J. S. Teppema, and A. D. M. E. Osterhaus. 1991. Virus infections of seals and other pinnipeds. *Reviews in Medical Microbiology* 2: 105-114.
- Walton, M.J. 1997. Population structure of harbour porpoises *Phocoena phocoena* in the seas around the UK and adjacent waters. *Proc. Royal Soc. Lond. B.* 264: 89-94.
- Wartzok, D., Watkins, W.A., Würsig, B. and Malme, C.I. 1989. Movements and behaviours of bowhead whales in response to repeated exposures to noises associated with industrial activities in the Beaufort Sea. Report from Purdue Univ., Fort Wayne, IN, for Amoco Production Co., Anchorage, AK. 228p
- Wiig, O. 1986. The status of the grey seal *Halichoerus grypus* in Norway. *Biol. Cons.* 38: 339-349.
- Wilson, B. Thompson, P.M. and Hammond, P.S. 1997. Habitat use by bottlenose dolphins: Seasonal distribution and stratified movement patterns in the Moray Firth, Scotland. *J. Appl. Ecol.* 34: 1365-1374.

Strategic Environmental Assessment - SEA2

Technical Report 006 - Marine Mammals

- Wolkers, J. I. C. Burkow, M. Monshouwer, C. Lydersen, S. Dahle, and R. F. Witkamp. 1999. Cytochrome P450-mediated enzyme activities and polychlorinated biphenyl accumulation in harp seal (*Phoca groenlandica*). *Marine Environmental Research* 48: 59-72.
- Yelverton, J.T., Richmond, D.R., Fletcher, E.R., & Jones, R.K. 1973. Safe distances from underwater explosion for mammals and birds, Rep. No. DNA 3114T. Lovelace Foundation for Medical Education and Research, Albuquerque, NM, Albuquerque, NM.
- Young, G.A. 1991. Concise methods for predicting the effects of underwater explosions on marine life. NSWC/WOL MP-91-220. Naval Surf. Weap. Cent., White Oak Lab., Silver Spring, MD. 13p DTIC/NTIS AD-A241310.
- Zakharov, V. M. and A. V. Yablokov. 1990. Skull asymmetry in the Baltic grey seal: effects of environmental pollution. *Ambio* 19: 266-269.
- Zegers, B.N. Lewis, W.F. Tjoen-A-Choy, M.R. Smeenk, C. Siebert, U. and Boon, J.P. 2001. Levels of some polybrominated diphenyl ethers (PBDE) flame retardants in animals of different trophic levels of the North Sea food web. Abstract Second Conference on Brominated Flame Retardants, Stockholm, Sweden, May 14-16. pp143-147